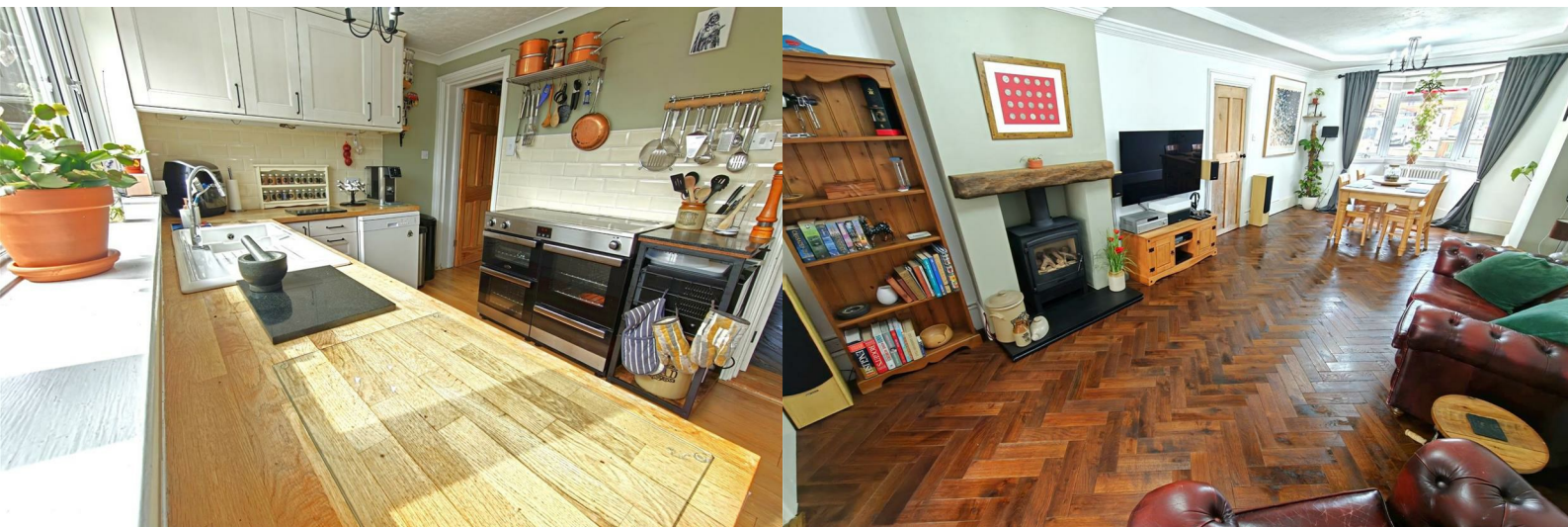




Hazelwood Road

, Corby, NN17 1HS

£240,000



Hazelwood Road

, Corby, NN17 1HS

£240,000



Entrance Hallway

Entered via a double glazed door, radiator, stairs rising to first floor landing, doors to:

Living/ Dining Room.

11'4" x 24'1" (3.46 x 7.35)

Double glazed bay window to front elevation, radiator, tv point, telephone point, double doors leading to.

Kitchen/Breakfast Room.

15'9" x 8'7" (4.82 x 2.63)

Fitted to comprise a range of base and eye level units one and a half sink and drainer, space for fridge/freezer, dishwasher and free standing cooker unit, spotlights, radiator, double glazed windows to rear elevation, double glazed patio doors to rear elevation.

Utility Room

5'8" x 4'0" (1.74 x 1.23)

shelves for use as pantry space, space for automatic washing machine, space for tumble dryer

Guest Cloakroom

5'8" x 4'3" (1.74 x 1.3)

Fitted to comprise a two piece suite consisting of a low level pedestal, low level wash hand basin, double glazed window to side elevation.

Master Bedroom

11'3" x 12'0" (3.45 x 3.68)

Double glazed window to front elevation, radiator,

Bedroom two.

11'4" x 10'8" (3.46 x 3.27)

Double glazed window to rear elevation, radiator,

Bedroom Three.

6'1" x 8'1" (1.87 x 2.47)

Double glazed window to front elevation, radiator,

Family Bathroom

6'0" x 7'5" (1.84 x 2.27)

Fitted to comprise a three piece suite consisting of a panel bath with shower over, low level wash hand basin, low level pedestal, heated towel rail, double glazed window to rear elevation

Outside.

Front: A tiled driveway providing of road parking for multiple vehicles.

Rear: A patio area leads onto a laid lawn and leading up to a timber shed, timber fencing, gated access to the side and front of the property.



Road Map



Hybrid Map



Terrain Map



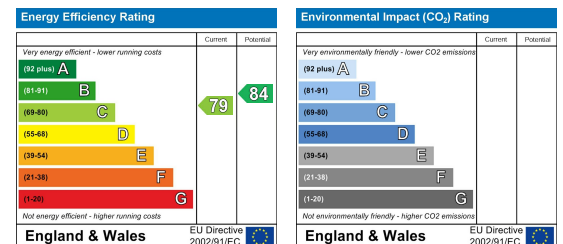
Floor Plan



Viewing

Please contact our Stuart Charles Estate Agents Office on 01536 234264 if you wish to arrange a viewing appointment for this property or require further information.

Energy Efficiency Graph



These particulars, whilst believed to be accurate are set out as a general outline only for guidance and do not constitute any part of an offer or contract. Intending purchasers should not rely on them as statements of representation of fact, but must satisfy themselves by inspection or otherwise as to their accuracy. No person in this firm's employment has the authority to make or give any representation or warranty in respect of the property.