



Osprey Drive, Corby

**STUART
CHARLES**
ESTATE AGENTS

£252,000

Offered FOR SALE with NO CHAIN is this THREE bedroom semi detached family home located in the Popular Priors hall park area. Situated a short walk away from several schools, the shopping area and multiple parks as well as green spaces. An early viewing is recommended to avoid missing out on this home. The accommodation comprises to the ground floor of an entrance hall, guest W.C, kitchen and open plan lounge/diner with views over the garden. To the first floor are three bedrooms and a three piece family bathroom. Outside to the front is a low maintenance garden which leads to a driveway that provides off road parking for multiple vehicles. To the rear an extended patio area leads onto an artificial laid lawn and has gated access to the front. Call now to view!!

- NO CHAIN
- LOUNGE/DINER
- MODERN THREE PIECE BATHROOM
- LOW MAINTENANCE FRONT AND REAR GARDEN
- CLOSE TO SHOPS
- MODERN KITCHEN
- GUEST W.C
- OFF ROAD PARKING FOR MULTIPLE VEHICLES
- CLOSE TO PRIMARY AND SECONDARY SCHOOLS
- CLOSE TO MAIN BUS LINKS

Entrance Hall

Entered via double glazed door, radiator, stairs to first floor landing, doors to:

W.C

Fitted to comprise a two piece suite consisting of a low level hand wash basin, low level pedestal, radiator.

Kitchen

10'0 x 8'3 (3.05m x 2.51m)

Fitted to comprise a range of base and eye level units with a single sink and drainer, gas hob with extractor, electric oven, space for automatic washing machine, space for free standing fridge/freezer, double glazed window to front elevation.







Lounge/Diner

15'1 x 14'1 (4.60m x 4.29m)

Double glazed French doors to rear elevation, radiator, Tv point, telephone point, under stairs storage cupboard.

First Floor Landing

Stairs rising from ground floor landing, storage cupboard, doors to:

Bedroom One

12'8 x 8'2 (3.86m x 2.49m)

Double glazed window to front elevation, radiator, built in wardrobes.





Bedroom Two

10'10 x 8'2 (3.30m x 2.49m)

Double glazed window to rear elevation, radiator,

Bedroom Three

10'3 x 6'7 (3.12m x 2.01m)

Double glazed window to front elevation, radiator, loft access.

Bathroom

Fitted to comprise a three piece suite consisting of a panel bath with mains feed shower over, low level pedestal, low level hand wash basin, radiator, double glazed window to front window.





Outside

Front: A low maintenance garden leads to a block paved driveway which provides off road parking for multiple vehicles and leads to gated rear access.

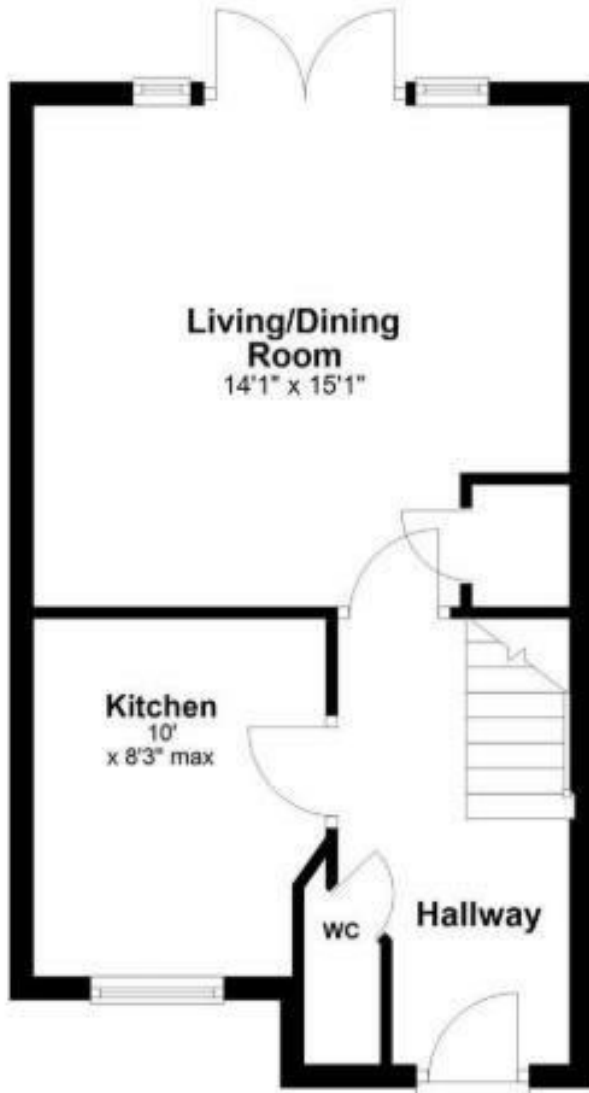
Rear: A large patio area leads onto a artificial laid lawn with established planting area's to all sides, gated access is provided to the front elevation.

An estate fee is payable circa £300.00 pcm.



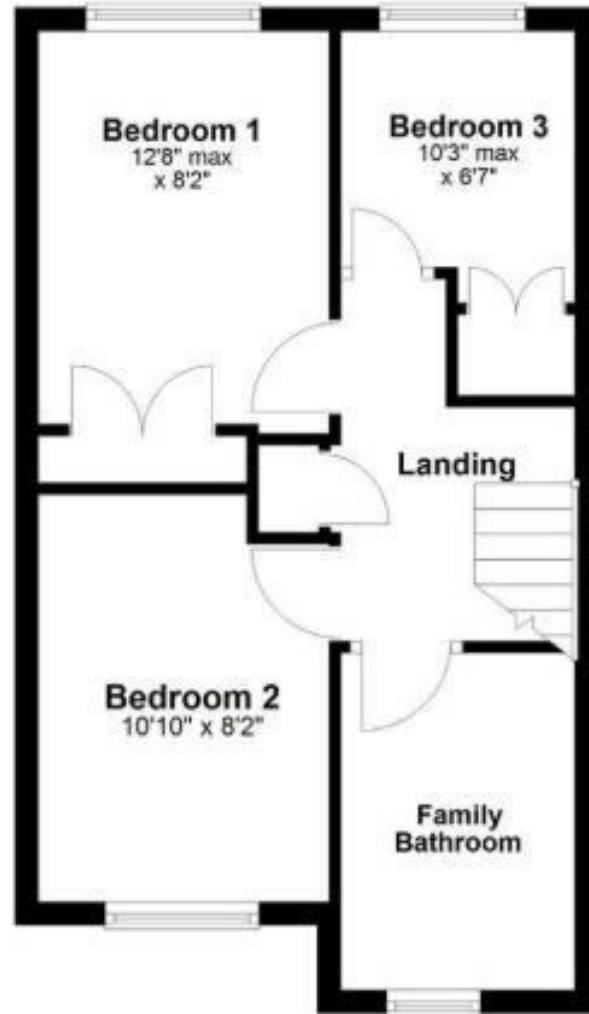
Ground Floor

Approx. 385.7 sq. feet



First Floor

Approx. 383.5 sq. feet



Total area: approx. 769.2 sq. feet

Energy Efficiency Rating		Current	Potential
Very energy efficient - lower running costs			
(92 plus) A			
(81-91) B			
(69-80) C			
(55-68) D			
(39-54) E			
(21-38) F			
(1-20) G			
Not energy efficient - higher running costs			
England & Wales		EU Directive 2002/91/EC	