



Lowry Close, Corby

**STUART
CHARLES**
ESTATE AGENTS

£1,100 Per month

Welcome to this beautifully finished family home located on Lowry Close in Corby to LET. This charming house boasts three well-proportioned bedrooms, The property features two reception rooms, providing ample room for relaxation

The home boasts a family bathroom and a convenient downstairs guest W/C, ensuring comfort and privacy for all residents and visitors. This home offers a lovely garden with garage and off road parking

Situated within walking distance to the town centre, this property benefits from easy access to a variety of local amenities, including shops, schools, and parks. Additionally, it is conveniently close to doctors' surgeries and bus links,

With a designated parking space, you will never have to worry about finding a spot for your vehicle. This home is not only beautifully finished throughout but also offers a perfect blend of comfort and convenience in a desirable location. Don't miss the opportunity to make this delightful property your new home.

- 3 DOUBLE BEDROOMS
- DINING ROOM
- BEAUTIFUL GARDEN
- CLOSE TO TOWN
- CLOSE TO BUS LINKS
- GUEST W/C
- PARKING & GARAGE
- CLOSE TO SCHOOLS & PARADE OF SHOPS
- CLOSE TO DOCTORS

ENTRANCE

LEADS TO

LOUNGE

18.8 x 11.5 (5.49m.2.44m x 3.35m.1.52m)

WITH DOUBLE GLAZED WINDOW TO THE FRONT & DOUBLE GLAZED FRENCH DOORS TO THE REAR, ELECTRICAL POINTS AND RADIATOR

DINING ROOM

13.10 x 8.11 (3.96m.3.05m x 2.44m.3.35m)

DOUBLE GLAZED WINDOW TO THE FRONT WITH ELECTRICAL SOCKETS AND RADIATOR

KITCHEN

10.5 x 11.1 (3.05m.1.52m x 3.35m.0.30m)

INCLUDES INTERGRETTED OVEN & HOB , EXTRACTOR FAN, BOILER,







ELECTRICAL SOCKETS , AREA FOR WASHING MACHINE AD FRIDGE FREEZER, HAND BASIN, AND DOUBLE GLAZED WINDOW AND DOOR TO GARDEN

DOWNSTAIRS W/C

6.0 x 5.1 (1.83m.0.00m x 1.52m.0.30m)

LOWER PEDESTAL, HAND BASIN AND RADIATOR, DOUBLLE GLAZED WINDOW TO REAR

BEDROOM ONE

14.7 x 12.11 (4.27m.2.13m x 3.66m.3.35m)

LARGE BEDROOM WITH ELECTRICAL SOCKETS, RADIATOR, WINDOWS TO FRONT AND REAR OF PROPERTY





BEDROOM TWO

10.5 x 9.6 (3.05m.1.52m x 2.74m.1.83m)

DOUBLE GLAZED WINDOW TO FRONT,
RADIATOR, ELECTRICAL SOCKETS

BEDROOM THREE

10.5 x 7.10 (3.05m.1.52m x 2.13m.3.05m)

DOUBLE GLAZED WINDOW TO REAR,
RADIATOR, ELECTRICAL SOCKETS

FAMILY BATHROOM

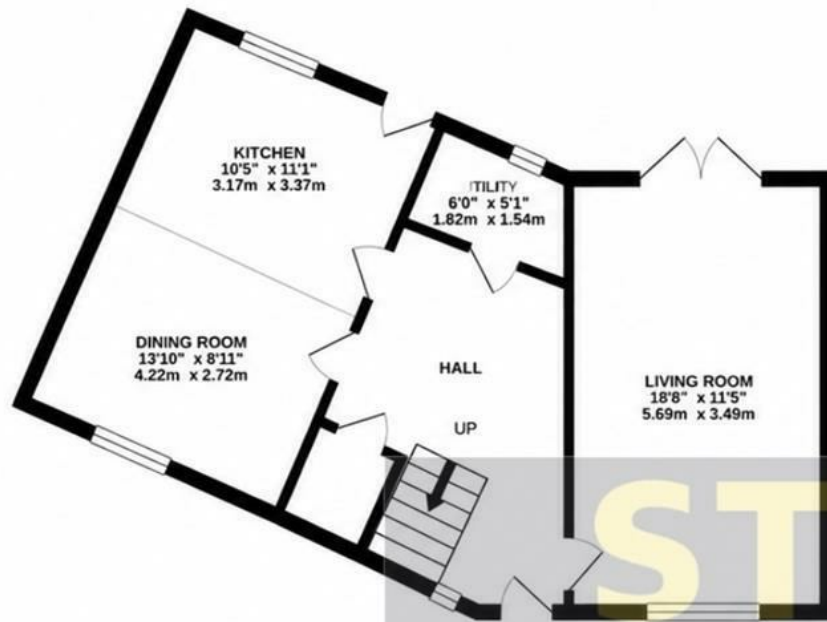
THREE PIECE BATHROOM WITH LOWER HAND
BASIN AND LOWER LEVEL PEDESTAL WITH
RADIATOR & DOUBLE GLAZED WINDOW TO
REAR

OUTSIDE

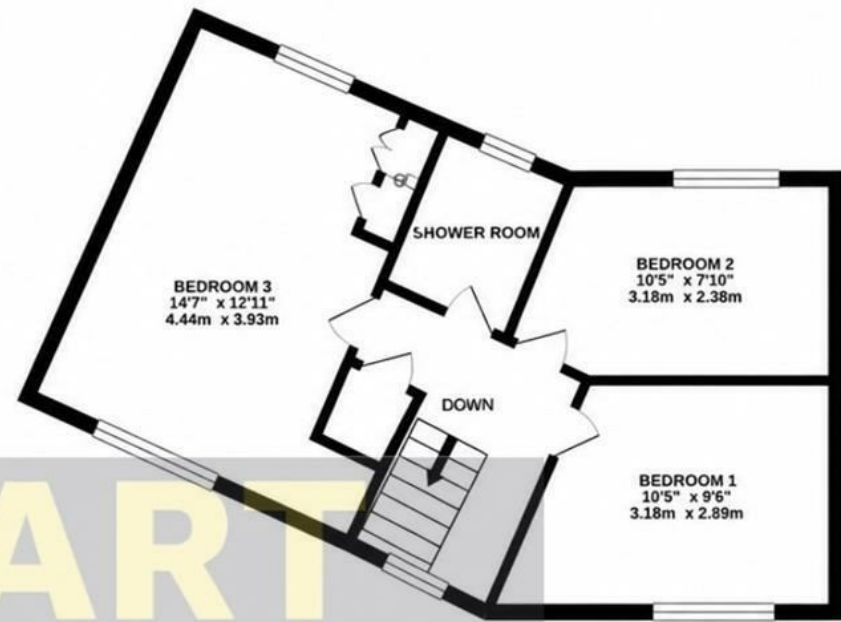




GROUND FLOOR
413 sq.ft. (38.3 sq.m.) approx.



1ST FLOOR
409 sq.ft. (38.0 sq.m.) approx.



STUART
CHARLES
ESTATE AGENTS

TOTAL FLOOR AREA : 822 sq.ft. (76.3 sq.m.) approx.

Whilst every attempt has been made to ensure the accuracy of the floorplan contained here, measurements of doors, windows, rooms and any other items are approximate and no responsibility is taken for any error, omission or mis-statement. This plan is for illustrative purposes only and should be used as such by any prospective purchaser. The services, systems and appliances shown have not been tested and no guarantee as to their operability or efficiency can be given.

Made with Metropix ©2025

