



Cransley Gardens

, Corby, NN17 2SU

£1,050 Per month



Cransley Gardens

, Corby, NN17 2SU

£1,050 Per month



Entrance Hall

Entered via a double glazed door, radiator, stairs rising to first floor landing, door to:

Lounge

17'4 x 9'2 (5.28m x 2.79m)

Double glazed windows to front and side elevations, two radiators, double glazed French doors to rear elevation, Tv point, Telephone point, door to:

Kitchen/Diner

19'10 max x 6'9 max (6.05m max x 2.06m max)

Fitted to comprise a range of base and eye level units with a one and a half bowl sink and drainer, space for free standing cooker, space for fridge freezer, space for washing machine radiator, double glazed window to front and rear elevation, under stairs storage cupboard.

First Floor Landing

Airing cupboard, loft access, doors to:

Bedroom One

17'4 x 9'4 max (5.28m x 2.84m max)

Double glazed window to front, rear and side elevation, radiator, built in wardrobe.

Bedroom Two

11'6 x 8'1 (3.51m x 2.46m)

Double glazed window to front elevation, radiator, built in double wardrobe.

Bathroom

Fitted to comprise a two piece suite consisting of a panel bath with electric shower over, low level pedestal, radiator, double glazed window to front elevation.

W.C

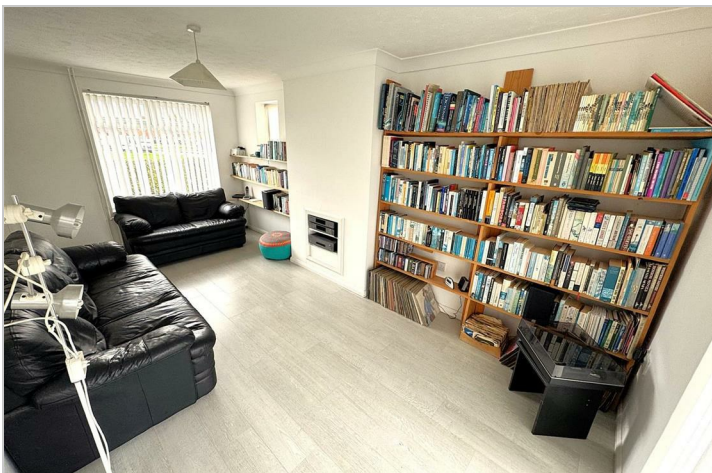
Fitted to comprise a low level pedestal and double glazed window to front elevation.

Outside

Front: A large wrap around laid lawn leads to the rear.

Rear: A patio area leads onto a laid lawn and gives access to the garage and off road parking.

Garage: with up and over door, off road parking is located in front of the garage via gated access.



Road Map



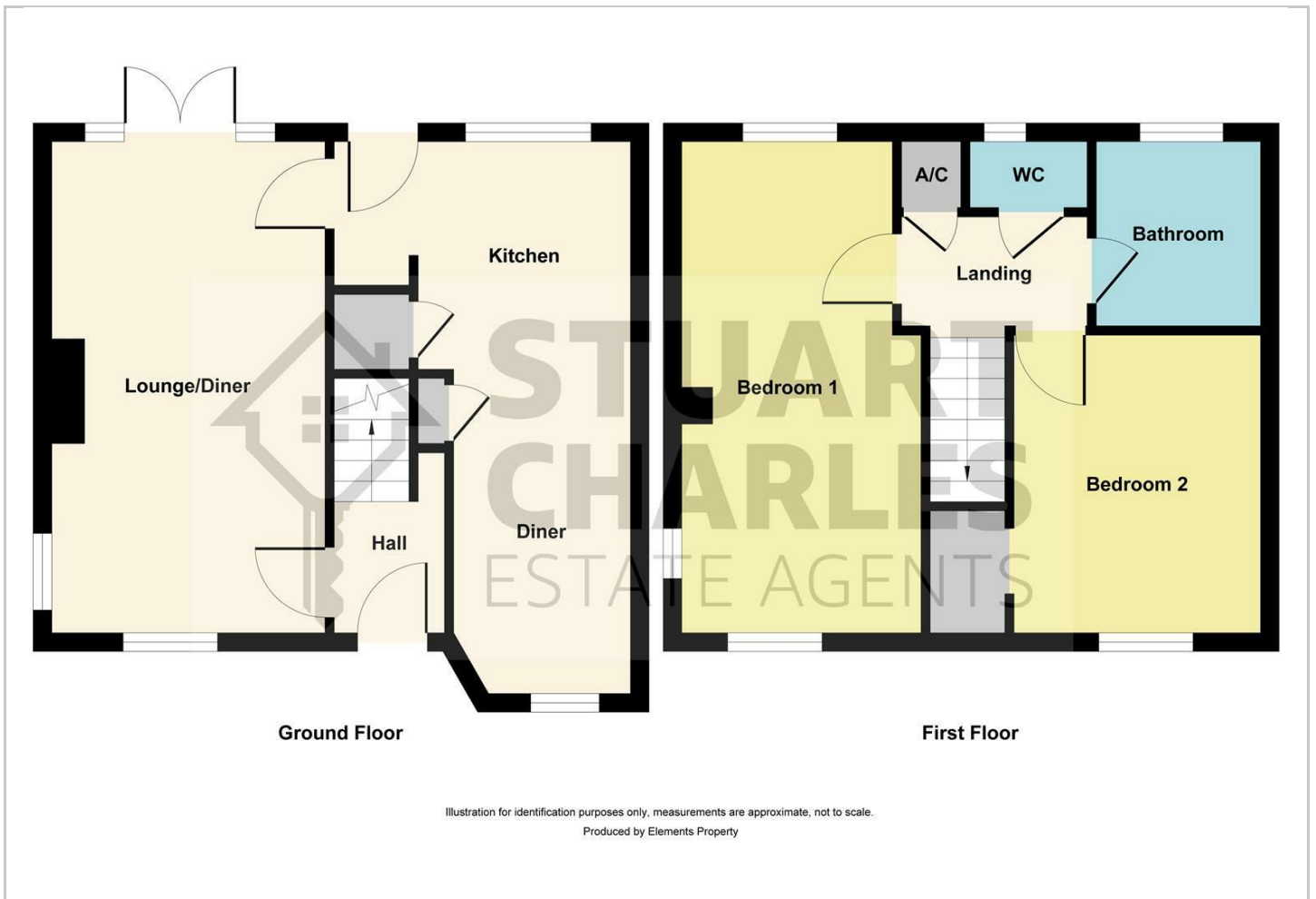
Hybrid Map



Terrain Map



Floor Plan



Viewing

Please contact our Stuart Charles Estate Agents Office on 01536 234264 if you wish to arrange a viewing appointment for this property or require further information.

Energy Efficiency Graph



These particulars, whilst believed to be accurate are set out as a general outline only for guidance and do not constitute any part of an offer or contract. Intending purchasers should not rely on them as statements of representation of fact, but must satisfy themselves by inspection or otherwise as to their accuracy. No person in this firm's employment has the authority to make or give any representation or warranty in respect of the property.