



Roman Road, Corby

**STUART
CHARLES**
ESTATE AGENTS

£215,000

Offered FOR SALE with NO CHAIN is this TWO DOUBLE bedroom semi detached home located in the quiet village of Little Stanion. Situated a short walk away from the primary school and the recently built shops an early viewing is recommended to avoid missing out on this home. The accommodation comprises to the ground floor of an entrance hall, guest W.c, kitchen and a lounge/diner. To the first floor are two double bedrooms and a three piece family bathroom. Outside to the front is a low maintenance gravel area while to the rear a patio area leads onto a laid lawn and has gated access to the off road parking space. Call now to view!!.

- MODERN KITCHEN WITH INTERGRATED APPLIANCES
- LOUNGE/DINER TO THE REAR
- GUEST W.C
- TWO DOUBLE BEDROOMS
- THREE PIECE FAMILY BATHROOM
- OFF ROAD PARKING TO THE REAR
- WALKING DISTANCE TO PRIMARY SCHOOL
- CLOSE TO SHOPS
- A SHORT DRIVE TO CORBY AND WELDON SECONDARY SCHOOLS
- A SHORT DRIVE TO TRAIN STATION

Entrance Hall

Entered via a double glazed door, radiator, stairs rising to first floor landing, doors to:

Guest W.C

Consisting of a two piece suite comprising a low level pedestal, low level wash hand basin, radiator, double glazed window to front elevation.

Kitchen

11'10 x 5'11 (3.61m x 1.80m)

Fitted to comprise a range of base and eye level units with a one and half bowl steel sink and drainer, gas hob with extractor, double electric oven, integrated fridge/freezer, space for automatic washing machine, space for dishwasher, wall mounted boiler, ceiling spotlights, double glazed email to front elevation.







Lounge/Diner

13'9 x 13'5 (4.19m x 4.09m)

Glazed French doors to the rear, radiator, tv point, telephone point, under stairs storage.

First Floor Landing

Bedroom One

13'5 x 10'6 (4.09m x 3.20m)

Two double glazed windows to rear elevation, built in double wardrobe, radiator.

Bedroom Two

13'5 x 8'5 (4.09m x 2.57m)

Double glazed window to front elevation, radiator.





Bathroom

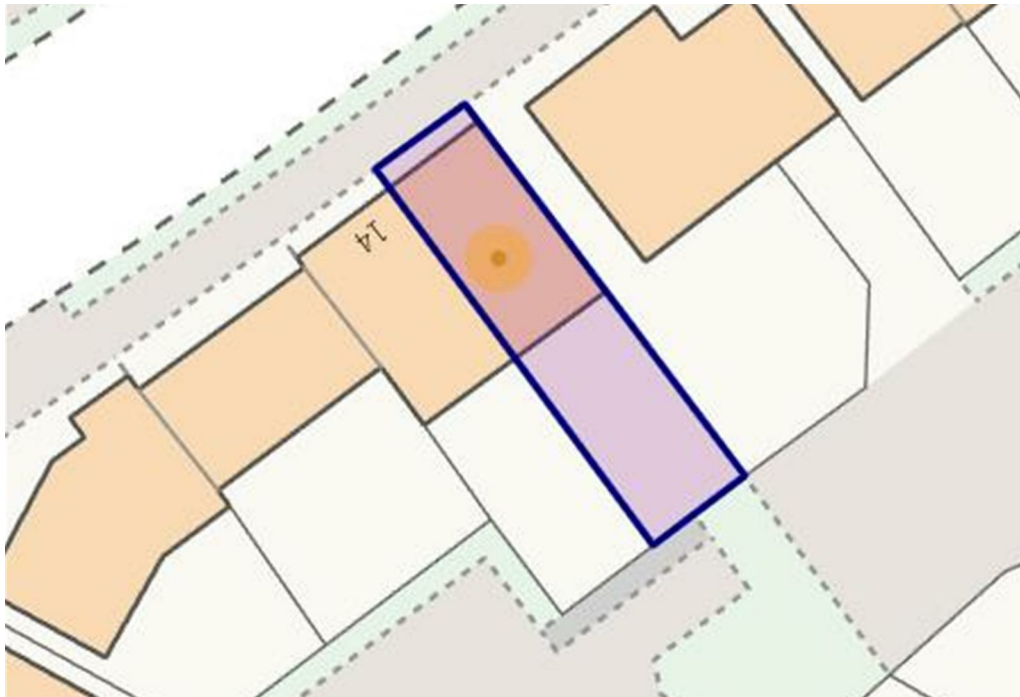
7'3 x 6'2 (2.21m x 1.88m)

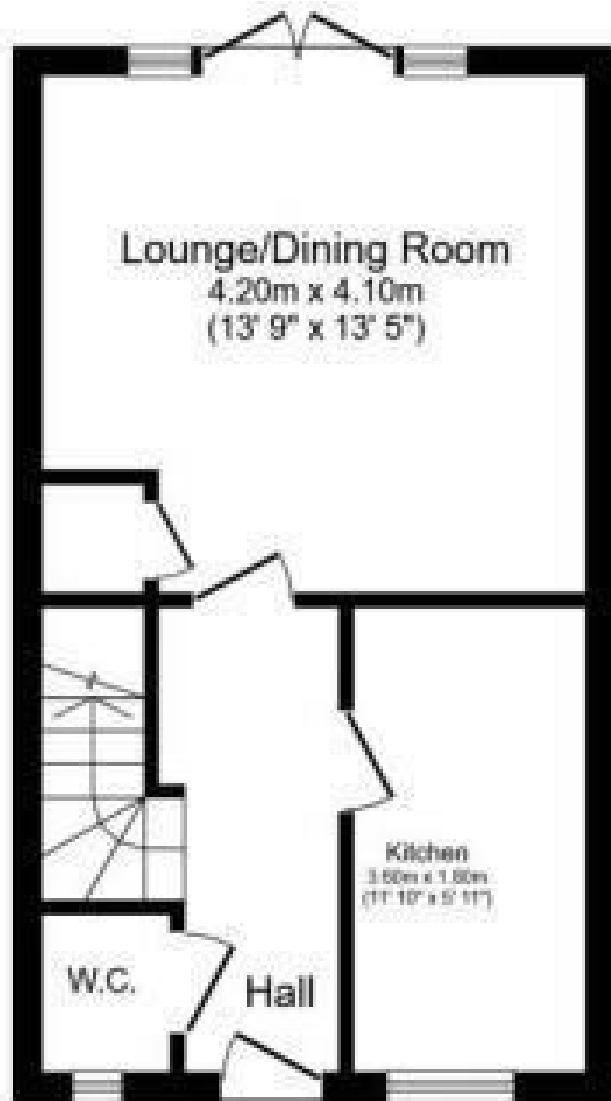
Fitted to comprise a three piece suite consisting of a panel bath with mixer shower tap, low level pedestal, low level wash hand basin, radiator.

Outside

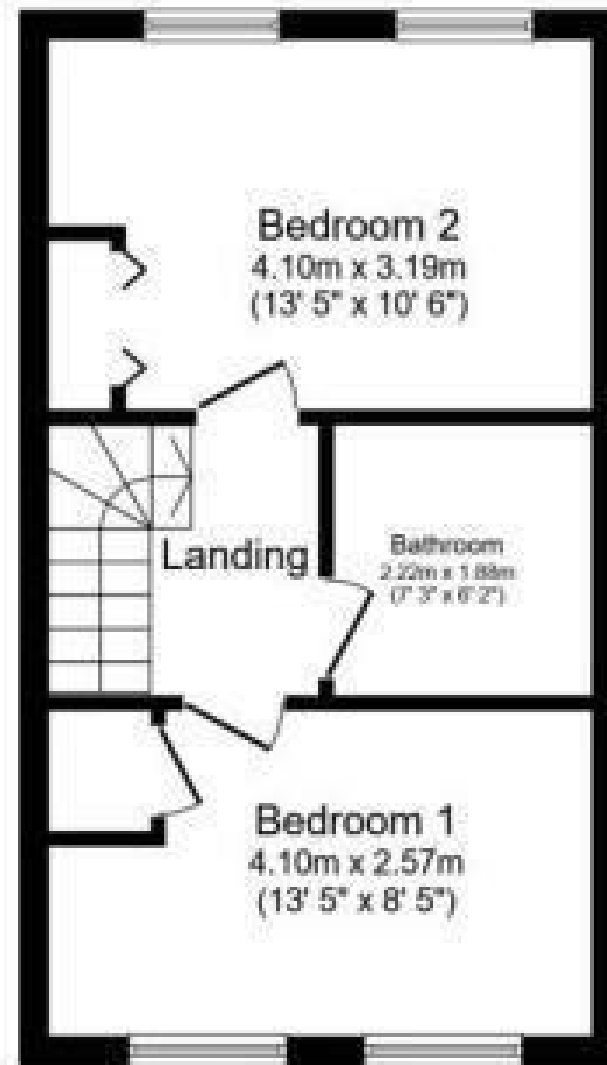
Front: Consisting of a low maintenance gravel area.

Rear: A patio area leads onto a laid lawn and is enclosed by timber fencing to all sides with gated rear access to the parking area.





Ground Floor



First Floor

