



Applegarth Close

, Corby, NN18 8EU

£275,000



Applegarth Close

, Corby, NN18 8EU

£275,000



Entrance Hall

A bright and airy entrance with doorway access to the guest cloakroom.

Kitchen

9'6" x 8'0" (2.9m x 2.44m)

Bright and contemporary fully fitted kitchen with double glazed window to the garden and rear door with access to the side entrance.

Lounge/Dining room.

23'7" x 16'4" (7.21m x 4.98m)

A wonderful family room with separate dining area and staircase leading to the first floor.

Snug/Day room.

12'7" x 9'1" (3.84m x 2.77m)

A really useful snug area that could be used for numerous purposes.

First floor landing

Leading to the 3 main bedrooms and family bathroom.

Bedroom one.

11'10" x 8'9" (3.61m x 2.67m)

Double room with double glazed window to rear elevation.

Bedroom two.

9'6" x 9'4" (2.92m x 2.87m)

Double room with double glazed window to front elevation.

Bedroom three.

8'7" x 7'3" (2.62m x 2.21m)

Single room currently used as a dressing room and walk in closet.

Family Bathroom

6'3" x 5'6" (1.93m x 1.7m)

Modern family bathroom with three piece suite to include bathtub

Outside.

Front; Double driveway and a selection of mature shrubs and trees.

Rear; Beautifully manicured rear garden with separate social spaces, lawn and patio.



Road Map



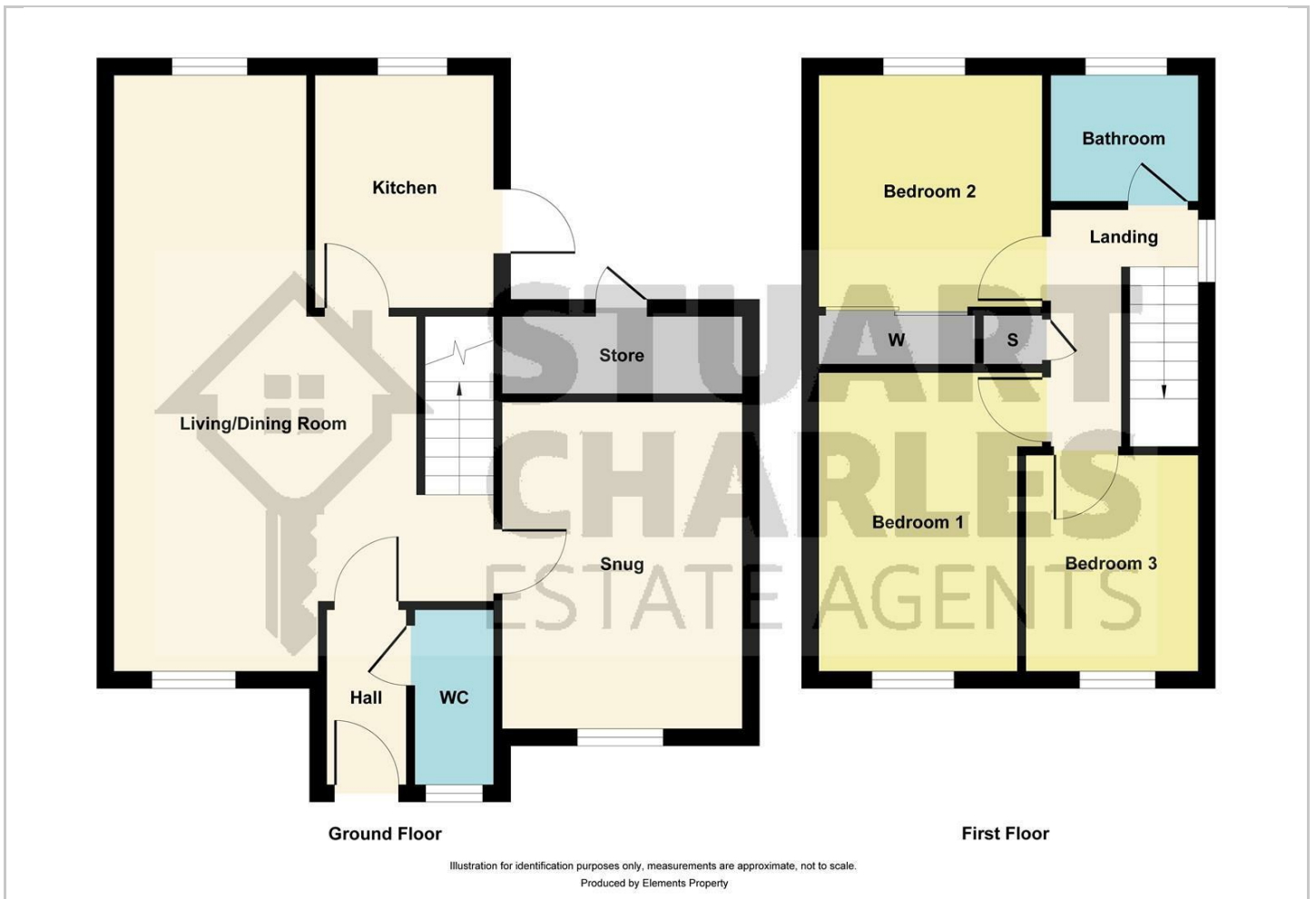
Hybrid Map



Terrain Map



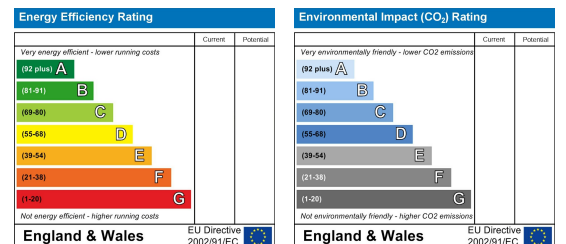
Floor Plan



Viewing

Please contact our Stuart Charles Estate Agents Office on 01536 234264 if you wish to arrange a viewing appointment for this property or require further information.

Energy Efficiency Graph



These particulars, whilst believed to be accurate are set out as a general outline only for guidance and do not constitute any part of an offer or contract. Intending purchasers should not rely on them as statements of representation of fact, but must satisfy themselves by inspection or otherwise as to their accuracy. No person in this firm's employment has the authority to make or give any representation or warranty in respect of the property.