



Hidcote Close

, Corby, NN18 8PF

£360,000



Hidcote Close

, Corby, NN18 8PF

£360,000



Entrance Hall

Entrance through a double glazed door into a light and airy hallway with staircase leading to the first floor and doors leading to the lounge and kitchen/family room.

Living room

18'9" x 10'3" (5.74 x 3.13)

Large lounge with Bay window to front elevation, carpeted and heated with radiators.

Kitchen/Family/Dining room

19'1" x 11'9" (5.83 x 3.6)

Full width, impressive kitchen/dining/family room with double glazed window allowing views over the garden and patio doors leading to rear patio.

The kitchen is fully fitted with both eye level and base units and fitted with integral appliances.

Utility room

8'2" x 5'10" (2.50 x 1.8)

Utility room with double glazed door to the rear garden and fitted with both eye level and low level units allowing room for both washing machine and tumble dryer plus sink unit.

Downstairs cloakroom

First floor landing

Doors leading to the four bedrooms and also serviced by the family bathroom.

Master Bedroom

14'8" x 11'6" (4.49 x 3.52)

A full, double master suite with double glazed window to front elevation and doors leading to both the landing and the en suite shower room.

En-suite

8'0" x 5'9" (2.44 x 1.77)

Ensuite shower room servicing the master bedroom fitted with low level cistern, wash hand basin and separate shower cubicle.

Bedroom two.

13'6" x 11'8" (4.12 x 3.57)

A full double bedroom with double glazed window to the rear elevation.

Bedroom Three

11'1" 9'1" (3.40 2.77)

An L shaped Double bedroom with double glazed window to the front elevation.

Bedroom Four.

8'1" x 9'1" (2.48 x 2.77)

A small double bedroom currently used as a home office with double glazed window to the rear elevation.

Family Bathroom

7'8" x 7'8" (2.35 x 2.35)

A family bathroom with Bath tub and shower over, hand wash basin and low level cistern, double glazed window to the rear.

Outside

Front; Double driveway with space for two cars leading to a single garage with up and over door, shrubs and graveled frontage completes the kerb appeal.

Rear; Side access to the front through a pedestrian gate, patio area, shrubbery and lawn creates a private and peaceful retreat with summer house/shed for convenience.



Road Map



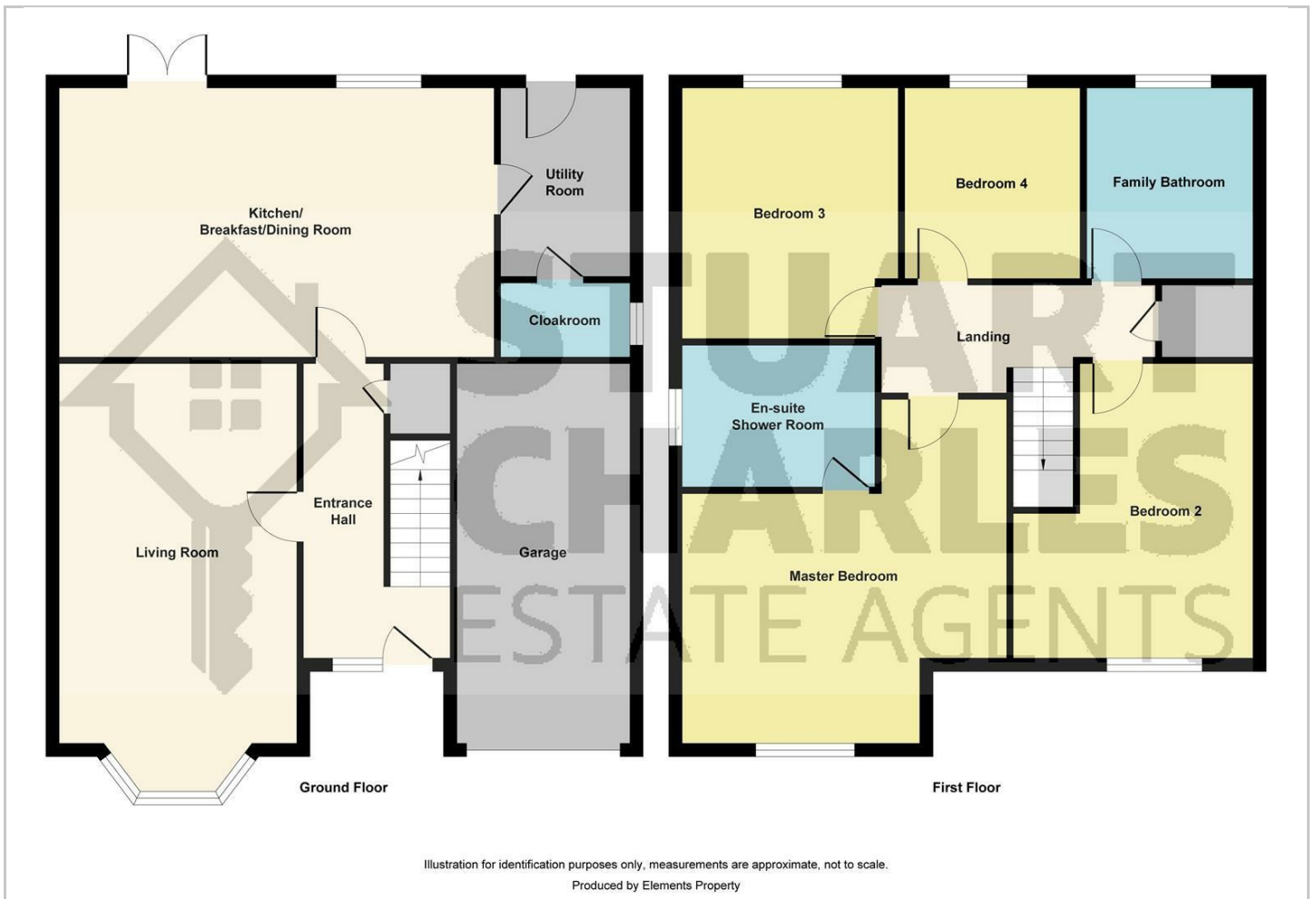
Hybrid Map



Terrain Map



Floor Plan



Viewing

Please contact our Stuart Charles Estate Agents Office on 01536 234264 if you wish to arrange a viewing appointment for this property or require further information.

Energy Efficiency Graph



These particulars, whilst believed to be accurate are set out as a general outline only for guidance and do not constitute any part of an offer or contract. Intending purchasers should not rely on them as statements of representation of fact, but must satisfy themselves by inspection or otherwise as to their accuracy. No person in this firm's employment has the authority to make or give any representation or warranty in respect of the property.