



Grilley Street

, Weldon, NN17 3GQ

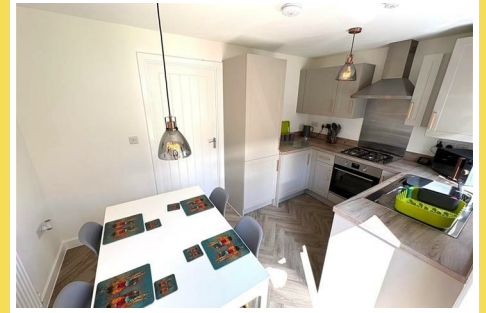
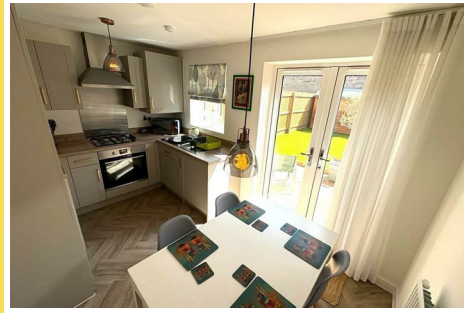
£1,050 Per month



Grilley Street

, Weldon, NN17 3GQ

£1,050 Per month



Entrance

w/c

Livingroom

15.1x9.6 (4.57m.0.30mx2.74m.1.83m)

Kitchen

12.9x8.2 (3.66m.2.74mx2.44m.0.61m)

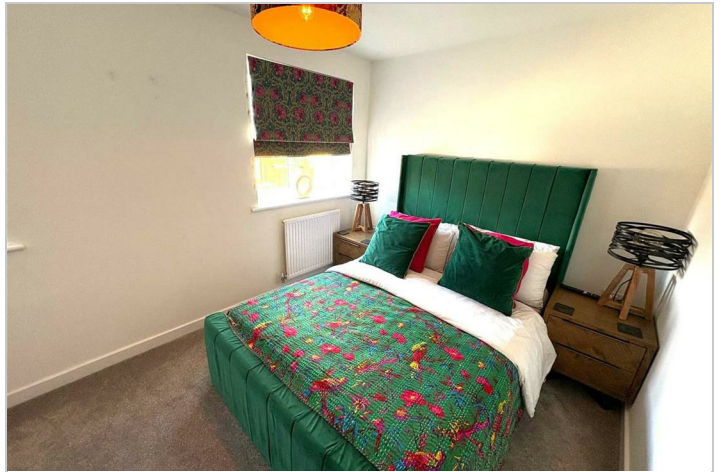
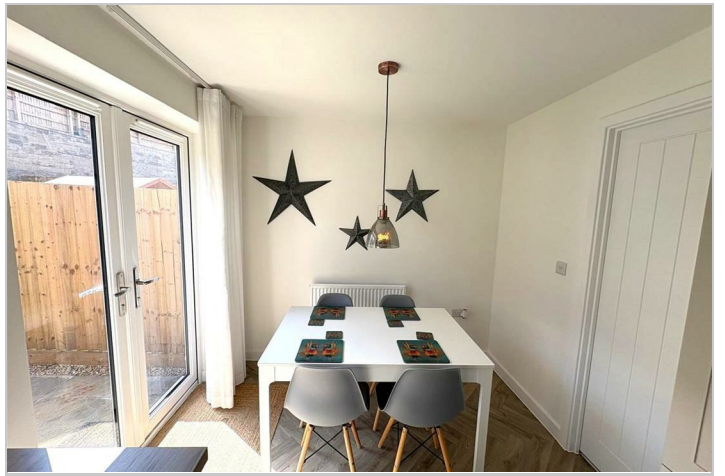
Bedroom One

12.9x8.6 (3.66m.2.74mx2.44m.1.83m)

Bedroom Two

12.9x8.2 (3.66m.2.74mx2.44m.0.61m)

Bathroom



Road Map



Hybrid Map



Terrain Map



Floor Plan

Ground Floor

- Kitchen/Dining Room: 3.88m x 2.49m (12' 9" x 8' 2")
- Living Room: 4.61m x 2.89m (15' 1" x 9' 6")
- W.C.
- W.C.

First Floor

- Bedroom 2: 3.88m x 2.49m (12' 9" x 8' 2")
- Bedroom 1: 3.88m x 2.60m (12' 9" x 8' 6")
- Bathroom
- Landing

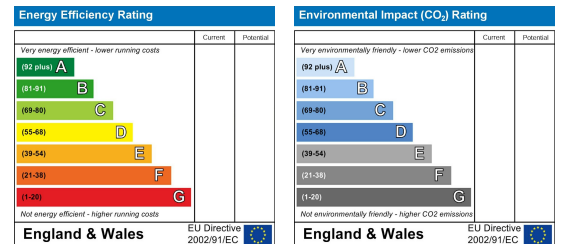
Total floor area 58.0 m² (624 sq.ft.) approx

This floor plan is for illustrative purposes only. It is not drawn to scale. Any measurements, floor areas (including any total floor area), openings and orientation are approximate. No details are guaranteed, they cannot be relied upon for any purpose and they do not form part of any agreement. No liability is taken for any error, omission or misstatement. A party must rely upon its own inspection(s). Powered by www.focalagent.com

Viewing

Please contact our Stuart Charles Estate Agents Office on 01536 234264 if you wish to arrange a viewing appointment for this property or require further information.

Energy Efficiency Graph



These particulars, whilst believed to be accurate are set out as a general outline only for guidance and do not constitute any part of an offer or contract. Intending purchasers should not rely on them as statements of representation of fact, but must satisfy themselves by inspection or otherwise as to their accuracy. No person in this firm's employment has the authority to make or give any representation or warranty in respect of the property.