



Dorking Walk, Corby

**STUART  
CHARLES**  
ESTATE AGENTS

**£175,000**

Offered for sale with NO CHAIN this three bedroom home located in the Kingswood area of Corby. Situated a short walk away from several schools and shops this home is ideal for first time buyers. The accommodation on offer comprises an entrance hall with guest WC, lounge and a good sized kitchen/diner with utility room. To the first floor are three well proportioned rooms and a three piece bathroom. To the rear is a low maintenance garden which is laid with decking and features a timber built summer house. Call now to view!!.

- NO CHAIN
- LARGE KITCHEN/DINER
- GUEST W.C
- LOW MAINTENANCE REAR GARDEN
- CLOSE TO MORRISONS
- LARGE LOUNGE
- UTILITY ROOM
- THREE GOOD SIZED ROOMS
- CLOSE TO MAN BUS LINKS
- CLOSE TO PRIMARY AND SECONDARY SCHOOLS

### Entrance Hall

Entered via a double glazed door, stairs rising to first floor landing, radiator, doors to:

### Guest W.C

Fitted to comprise a two piece suite consisting of a low level wash hand basin, pedestal and double glazed window to the side elevation.

### Lounge

15'11 x 12'06 (4.85m x 3.81m)  
Double glazed window to the rear and front elevation, two radiators, Tv and Telephone points.

### Kitchen/Diner

15'10 x 8'07 (4.83m x 2.62m)  
Fitted to comprise a range of base and eye level units with a single sink and drainer, space for free standing gas/electric cooker, space for







American fridge/freezer, space for condensing dryer, radiator, double glazed patio door to rear elevation, double glazed window to rear elevation, archway to:

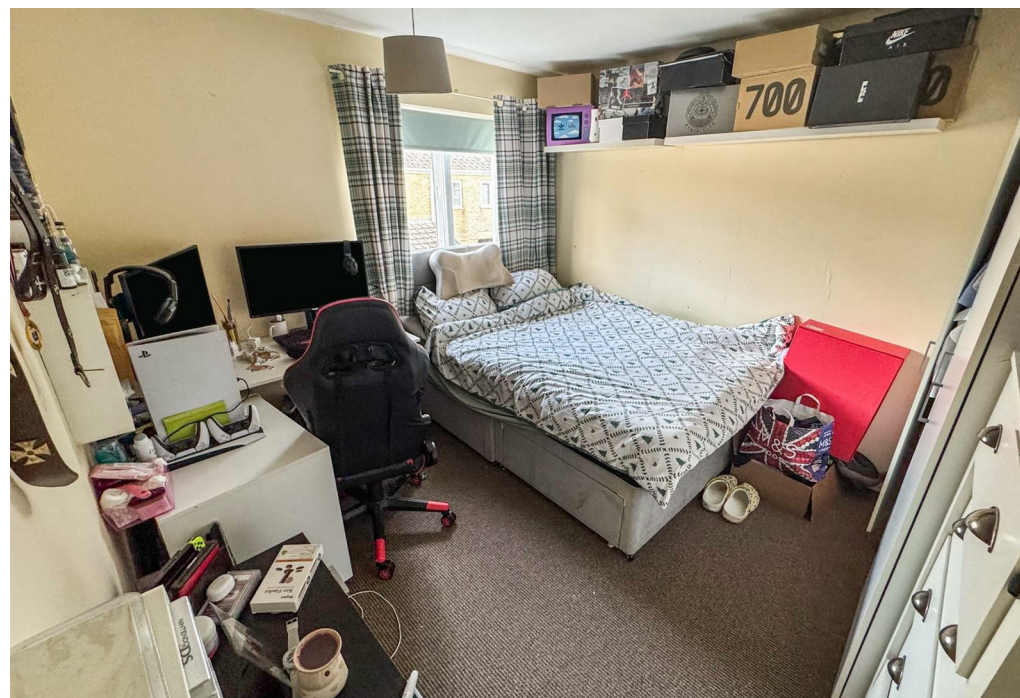
### Utility Room

9'08 x 6'05 (2.95m x 1.96m)

Double glazed door to front elevation, space for automatic washing machine, space for free standing fridge/freezer.

### First Floor Landing

Airing cupboard, storage cupboard, loft access, doors to:





### Bedroom One

16'0 x 11'6 (4.88m x 3.51m)

Double glazed window to the front elevation, radiator.

### Bedroom Two

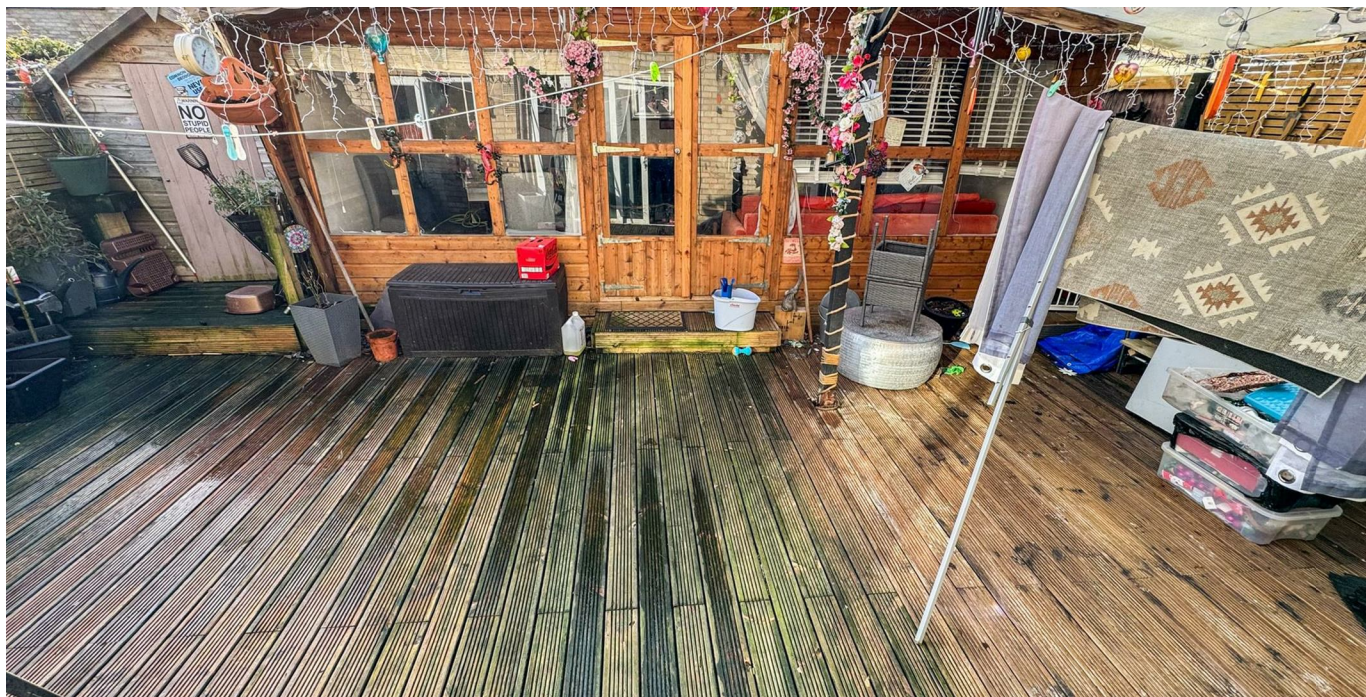
11'0 x 9'07 (3.35m x 2.92m)

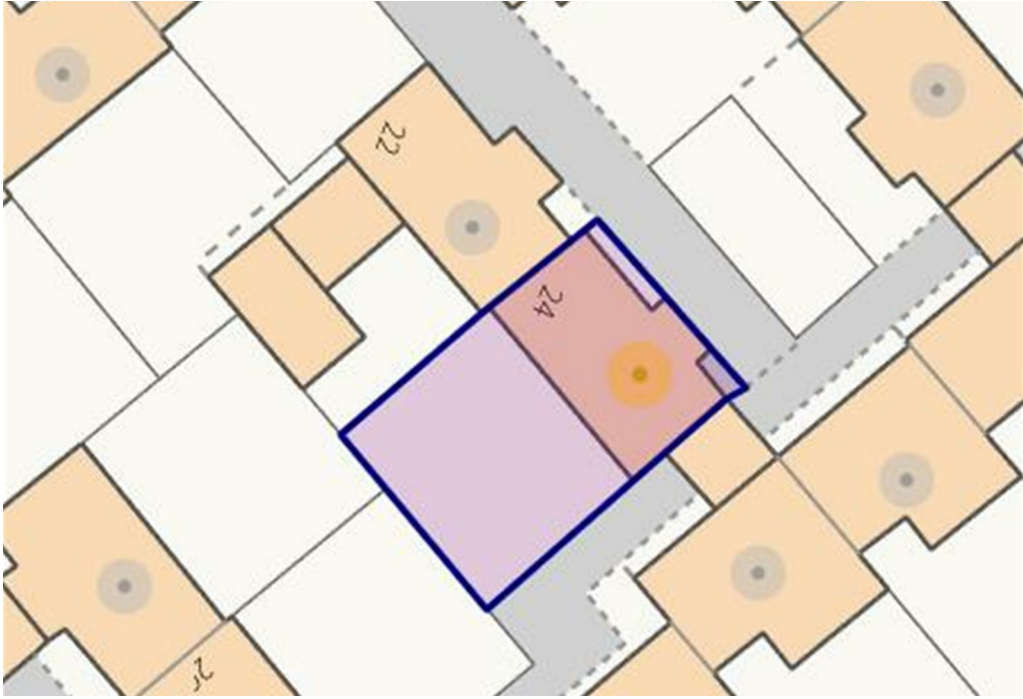
Double glazed window to the front elevation, built in wardrobe.

### Bedroom Three

10'09 x 6'05 (3.28m x 1.96m)

Double glazed window to the front elevation, radiator, built in wardrobe.





**Bathroom**

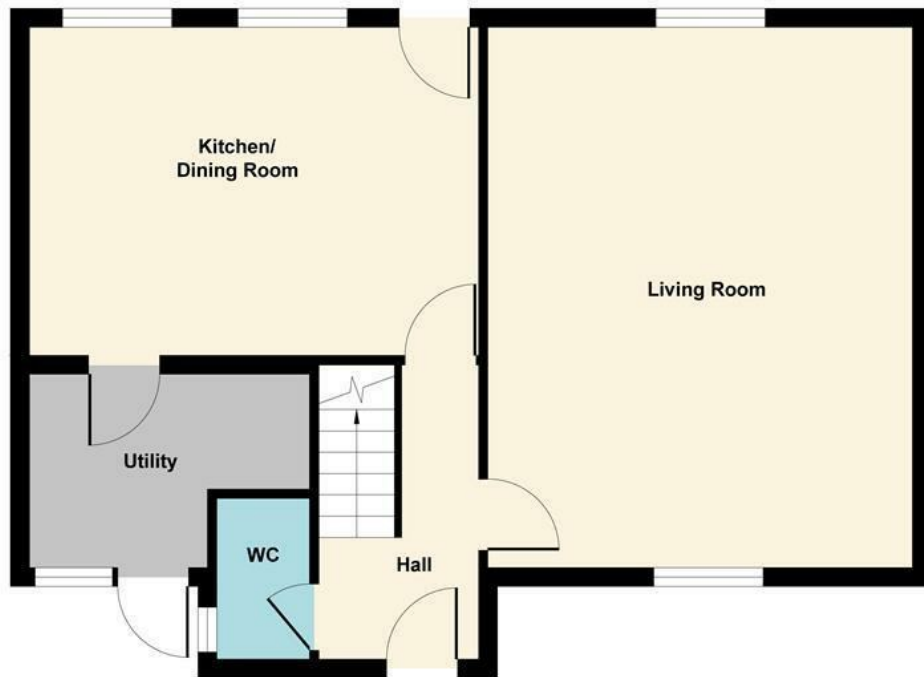
9'06 x 4'07 (2.90m x 1.40m)

Fitted to comprise a three piece suite consisting of a panel bath with electric shower over, low level pedestal, low level wash hand basin, radiator, double glazed window to rear elevation.

**Outside**

Rear: A large decking area leads up to a timber built summer house ( Available subject to offer) while the garden is enclosed by timber fencing to all sides.





Ground Floor



First Floor

Illustration for identification purposes only, measurements are approximate, not to scale.

Produced by Elements Property

