



60 Kensington walk, Corby, NN18 9JB

# £180,000

Offered FOR SALE with NO CHAIN is this FOUR BEDROOM family home located near the Town centre area of Corby. Set within walking distance to St Patricks school, Corby primary academy and Brooke Weston Academy as well as Oakleyvale shops an early viewing is recommended to avoid missing out on this home. The accomodation comprises to the ground floor of an entrance hall, guest W.C, large lounge, kitchen/diner and utility area. To the first floor are four good sized bedrooms and a three piece family bathroom. Outside to the front is a low maintenance laid lawn and small patio area while to the rear the entire garden has been laid to a low maintenance patio area with pedestrian door to the garage and gated access to the off road parking space. Call now to view!!

- NO CHAIN
- OPEN PLAN KITCHEN/DINER
- FOUR BEDROOMS
- OFF ROAD PARKING AND GARAGE
- WALKING DISTANCE TO SCHOOLS
- LARGE LOUNGE
- GUEST W.C
- THREE PIECE FAMILY BATHROOM
- LOW MAINTENANCE FRONT AND REAR GARDENS
- WALKING DISTANCE TO SHOPS

## Entrance Hall

Entered via a double glazed door, radiator, stairs rising to first floor landing, doors to:

## Guest W.C

Fitted to comprise a two piece suite consisting of a low level pedestal, low level wash hand basin, radiator, double glazed window to side elevation.

## Lounge

16'6 x 12'6 (5.03m x 3.81m)  
Double glazed window to front elevation, double glazed French doors to rear elevation, radiator, Tv point, telephone point.

## Kitchen/Diner

16'6 x 15'8 max (5.03m x 4.78m max)  
Fitted to comprise a range of base and eye level units with single steel sink and drainer, gas hob with extractor,







electric oven, space for fridge/freezer, space for automatic washing machine, two radiators, double glazed window and French doors to rear elevation.

### First Floor Landing

Loft access, stairs rising from ground floor, airing cupboard, doors to:

### Bedroom One

16'6 x 10'11 (5.03m x 3.33m)

Double glazed window to front elevation, radiator, built in wardrobe.

### Bedroom Two

15'1 x 9'6 (4.60m x 2.90m)

Double glazed window to side elevation, radiator.





### Bedroom Three

11'0 x 7'0 (3.35m x 2.13m)

Double glazed window to front elevation, radiator.

### Bedroom Four

11'0 x 6'11 (3.35m x 2.11m)

Double glazed window to front elevation, radiator.

### Bathroom

9'2 x 5'6 (2.79m x 1.68m)

Fitted to comprise a three piece suite consisting of a panel bath with electric shower over, low level pedestal, low level wash hand basin, radiator, double glazed window to rear elevation.

### Outside





Front: A low maintenance laid lawn leads to a patio area.

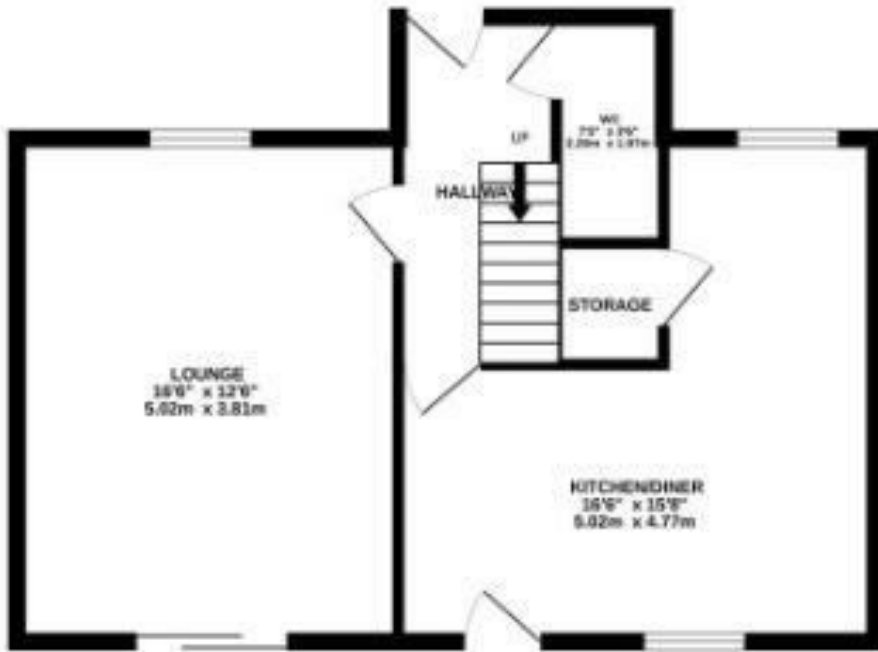
Rear: A large low maintenance paved garden is enclosed by timber fencing to all sides, pedestrian access leads to the garage and gated access the driveway.

Garage: With up and over door,

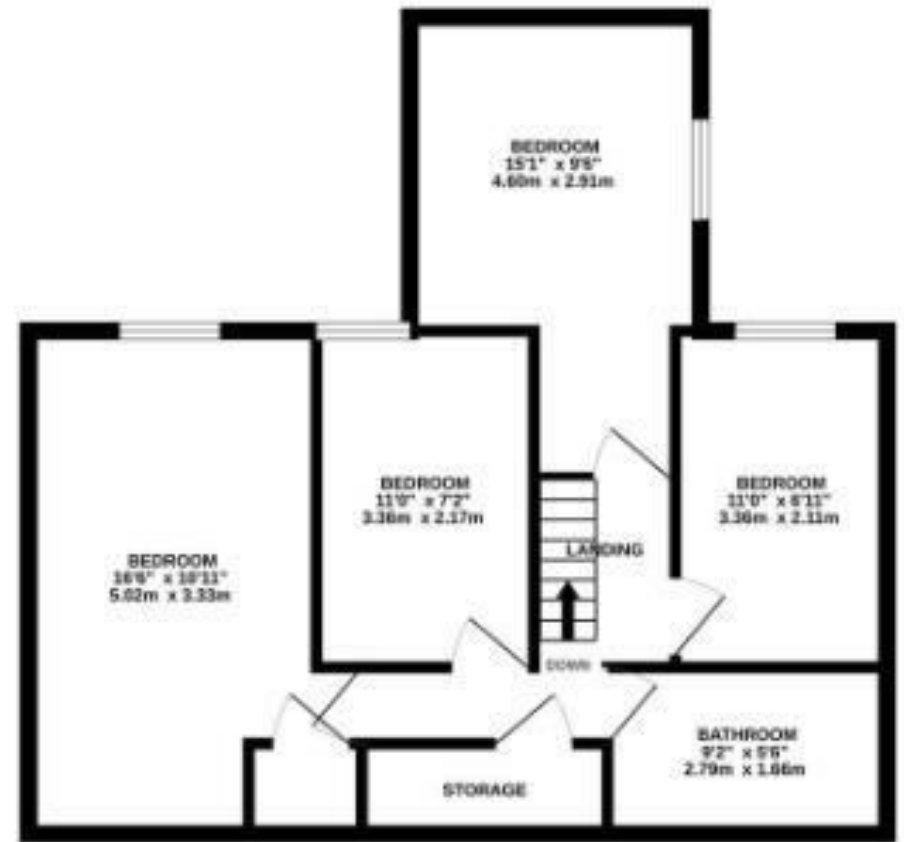




GROUND FLOOR  
498 sq.ft. (46.3 sq.m.) approx.



1ST FLOOR  
561 sq.ft. (52.2 sq.m.) approx.



TOTAL FLOOR AREA: 1060 sq.ft. (98.4 sq.m.) approx.

