



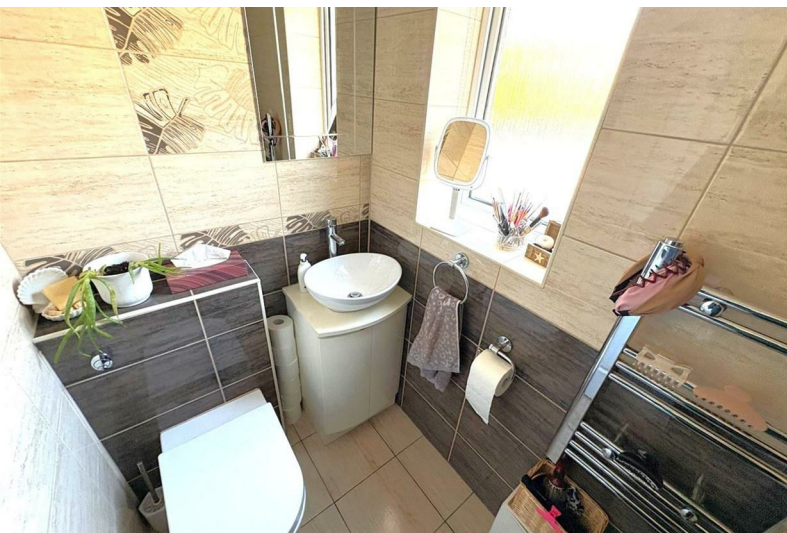
**STUART  
CHARLES**  
ESTATE AGENTS



## Bede Close

, Corby, NN18 9PE

£1,100 Per month



# Bede Close

, Corby, NN18 9PE

£1,100 Per month



Entrance

W/C

Kitchen

9.5x7.7 (2.74m.1.52mx2.13m.2.13m)

Lounge/diner

19.8x16.11 (5.79m.2.44mx4.88m.3.35m)

Bedroom One

17.5x8.8 (5.18m.1.52mx2.44m.2.44m)

Bedroom Two

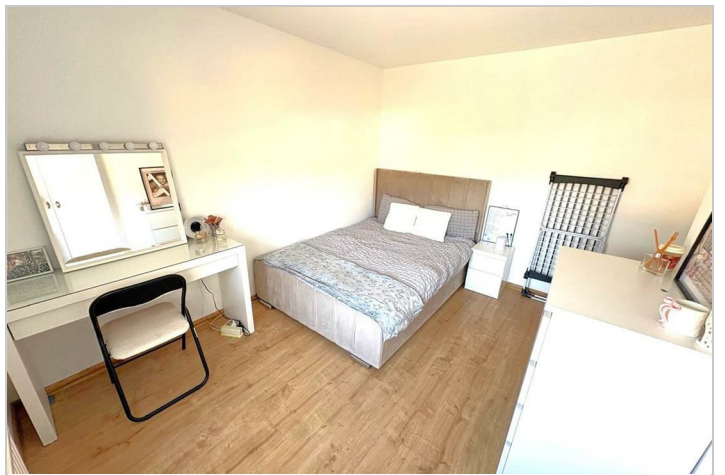
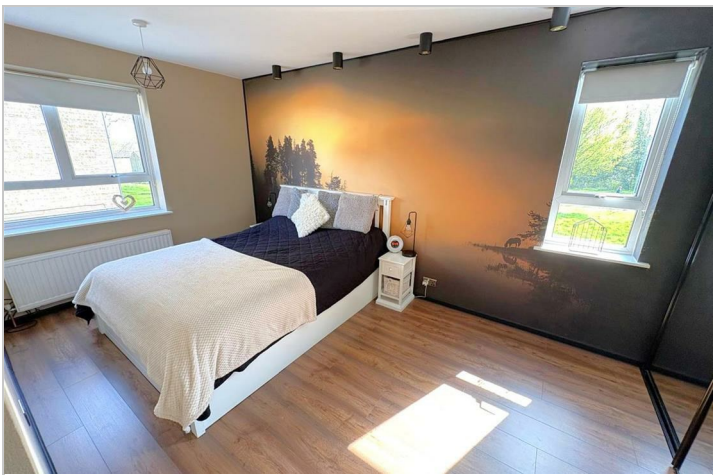
12.2x10.7 (3.66m.0.61mx3.05m.2.13m)

Bedroom Three

10.7x6.4 (3.05m.2.13mx1.83m.1.22m)

Family bathroom

7.5x6.4 (2.13m.1.52mx1.83m.1.22m)



Road Map



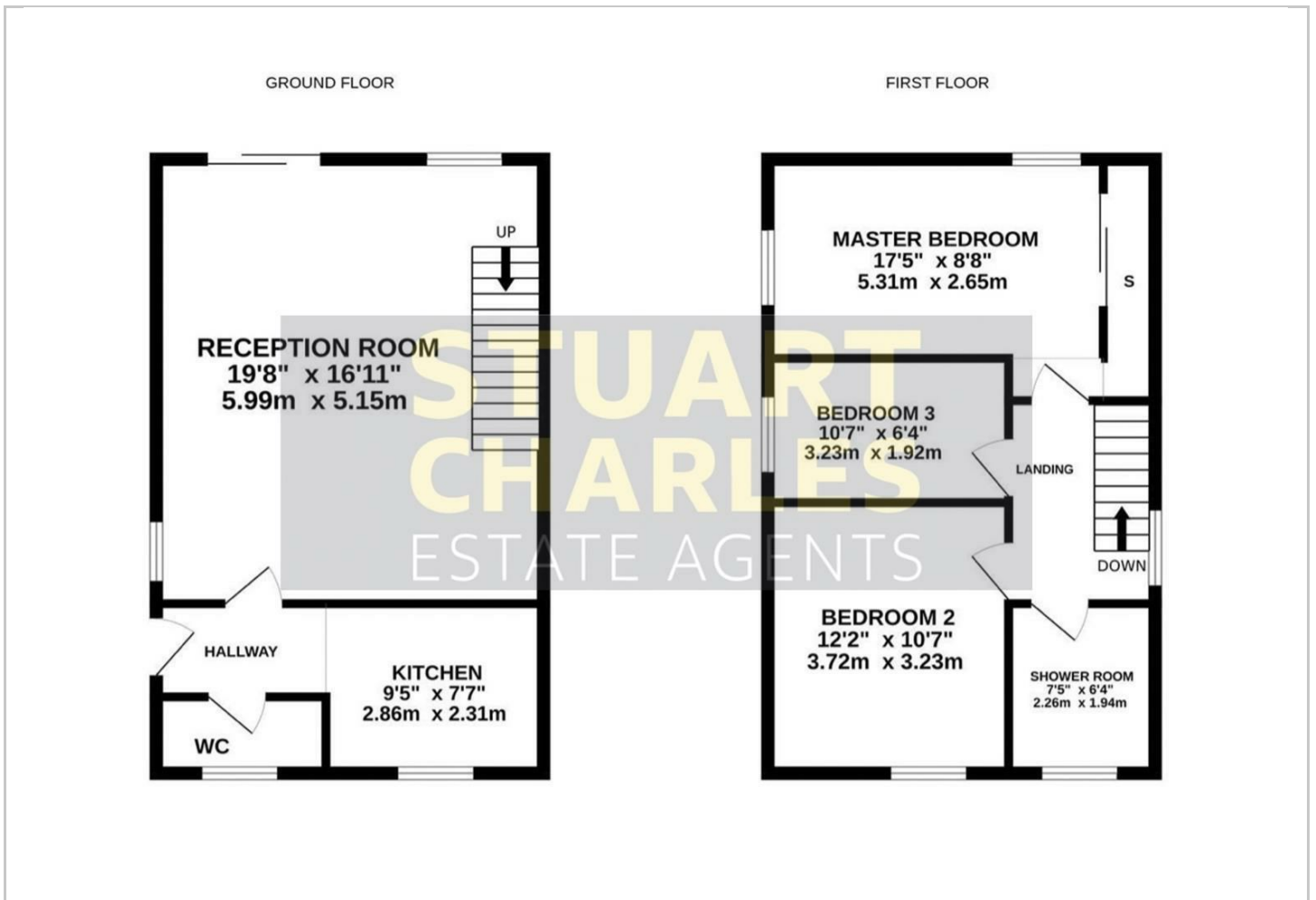
Hybrid Map



Terrain Map



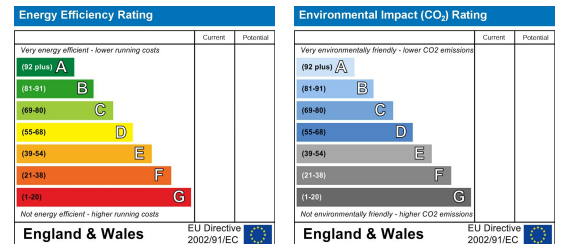
Floor Plan



Viewing

Please contact our Stuart Charles Estate Agents Office on 01536 234264 if you wish to arrange a viewing appointment for this property or require further information.

Energy Efficiency Graph



These particulars, whilst believed to be accurate are set out as a general outline only for guidance and do not constitute any part of an offer or contract. Intending purchasers should not rely on them as statements of representation of fact, but must satisfy themselves by inspection or otherwise as to their accuracy. No person in this firm's employment has the authority to make or give any representation or warranty in respect of the property.