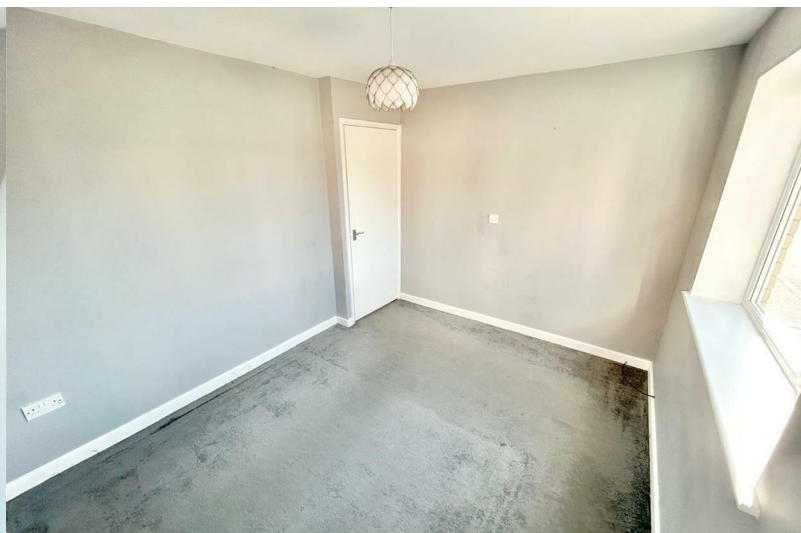




Langdale Grove

, Corby, NN17 2DG

Offers invited £122,500



Langdale Grove

, Corby, NN17 2DG

Offers invited £122,500



Entrance Hall

Enter via a double glazed door with access to the Airing Cupboard to your left and radiator to right

Living Room

11.8x9 (3.35m.2.44mx2.74m)

The living room comprises of two double glazed windows and an electric radiator with several electric points round the room

Kitchen

10.04x8.99 (3.05m.1.22mx2.44m.30.18m)

Fitted to comprise a range of base and eye level units with a single sink, electric hob with extractor, electric oven, space for a fridge/freezer, an electric radiator and two double glazed windows.

Bedroom One

11.2x9.2 (3.35m.0.61mx2.74m.0.61m)

Double glazed windows, radiator.

Bedroom Two

11.6x8.6 (3.35m.1.83mx2.44m.1.83m)

Double glazed windows, radiator.

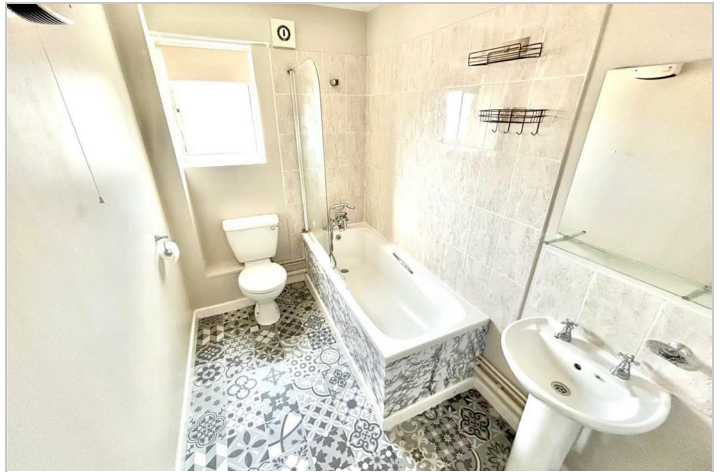
Bathroom

8.6x5.6 (2.44m.1.83mx1.52m.1.83m)

Fitted to comprise a three piece suite consisting of a low level hand wash basin, low level pedestal, bath with overhead system shower and extractor.

Outside

A large carpark offers allocated parking and shared communal bins.



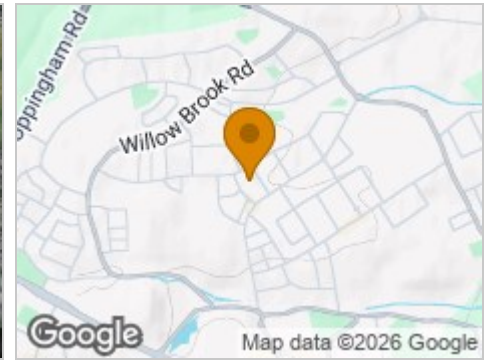
Road Map



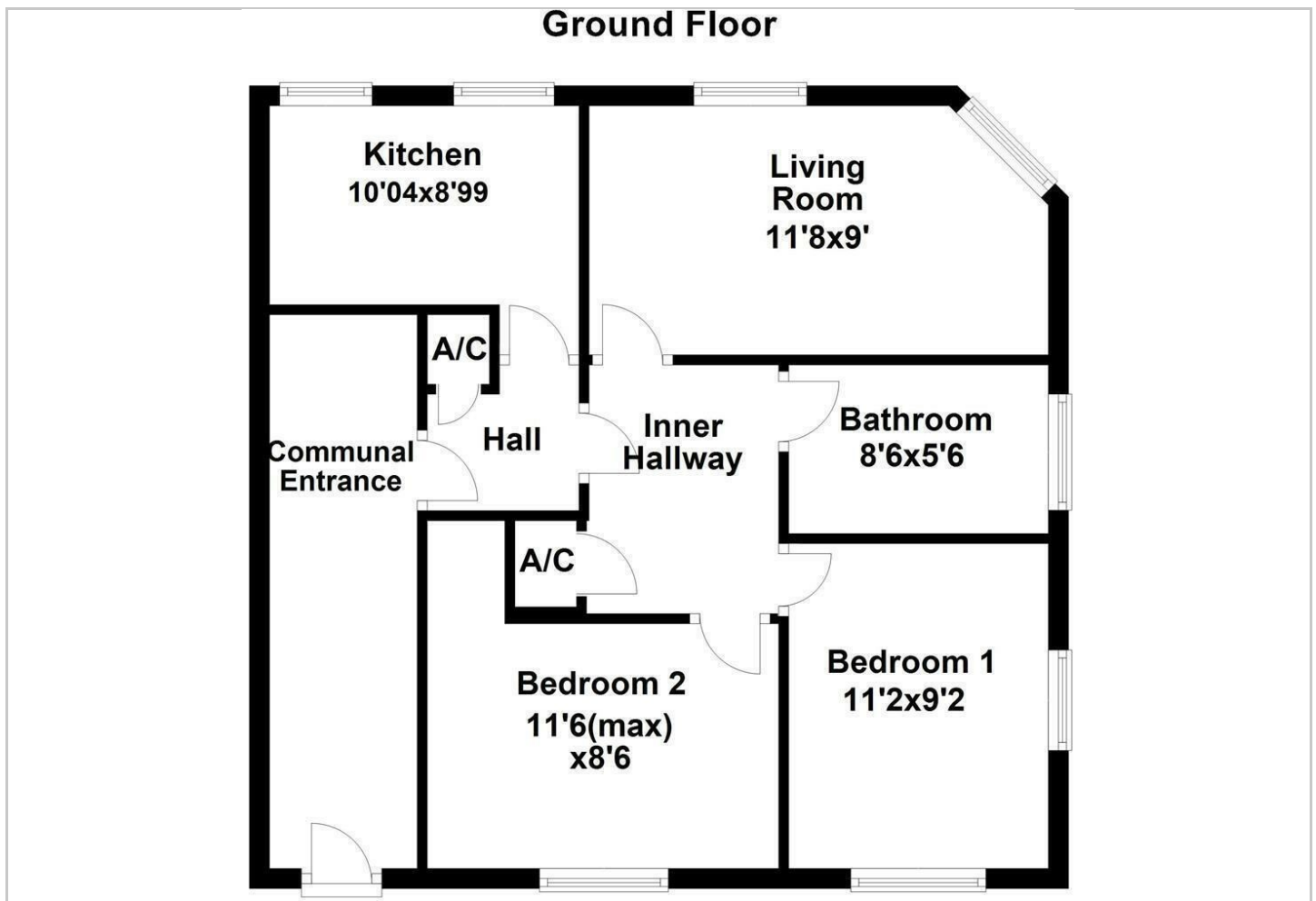
Hybrid Map



Terrain Map



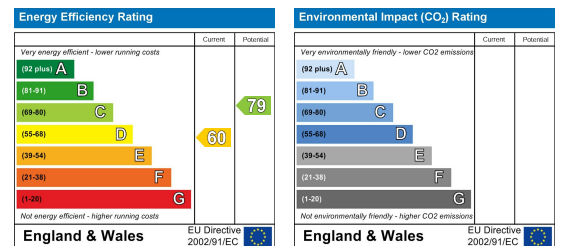
Floor Plan



Viewing

Please contact our Stuart Charles Estate Agents Office on 01536 234264 if you wish to arrange a viewing appointment for this property or require further information.

Energy Efficiency Graph



These particulars, whilst believed to be accurate are set out as a general outline only for guidance and do not constitute any part of an offer or contract. Intending purchasers should not rely on them as statements of representation of fact, but must satisfy themselves by inspection or otherwise as to their accuracy. No person in this firm's employment has the authority to make or give any representation or warranty in respect of the property.