



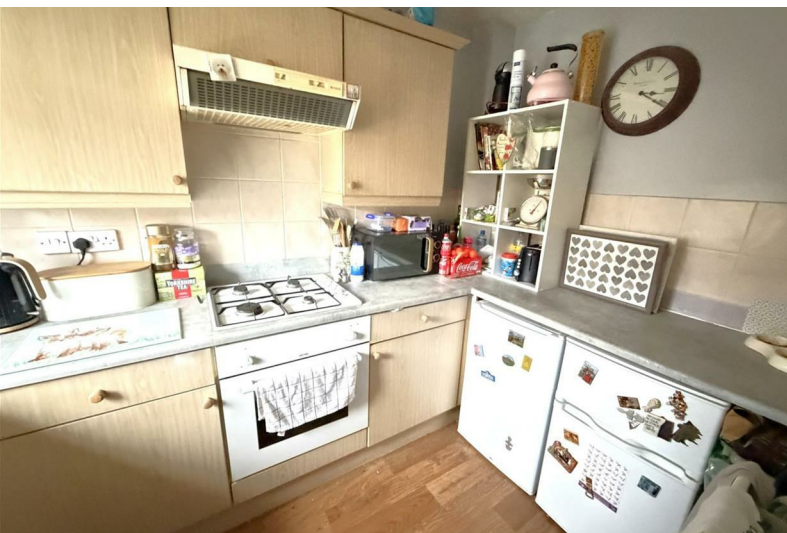
**STUART
CHARLES**
ESTATE AGENTS



Barth Close

Great Oakley, Corby, NN18 8LU

£215,000



Barth Close

Great Oakley, Corby, NN18 8LU

£215,000



Entrance Hall

Entered via a double front door, radiator, stairs rising to first floor, doors to:

Kitchen

8'11" x 4'11" (2.74m x 1.52m)

Fitted to comprise a range of base and eye level units with a single steel sink and drainer, gas hob with extractor, electric oven, space for automatic washing machine, space for low level fridge/freezer, radiator, wall mounted boiler, double glazed window to front elevation.

Lounge/Diner

14'4" x 13'3" (4.37m x 4.04m)

Double glazed patio door to rear elevation, radiator, Tv point, telephone point.

First Floor Landing

Loft access, stairs rising from ground floor, doors to:

Bedroom One

12'2" x 10'0" (3.73m x 3.07m)

Double glazed window to rear elevation, radiator.

Bedroom Two

12'2" x 6'11" (3.73m x 2.13m)

Double glazed window to front elevation, radiator, airing cupboard.

Bathroom

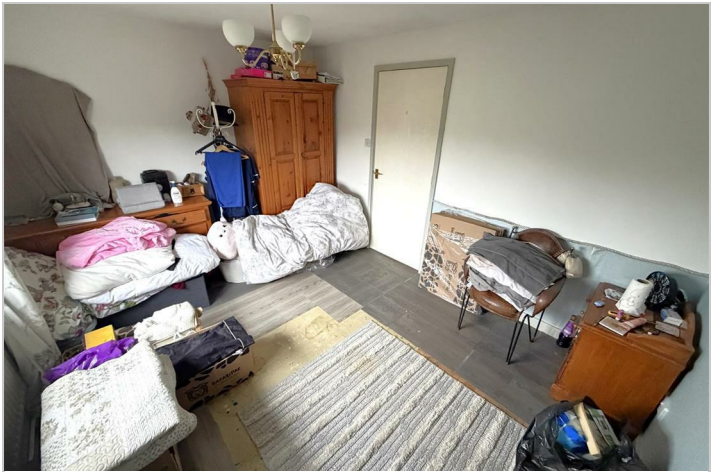
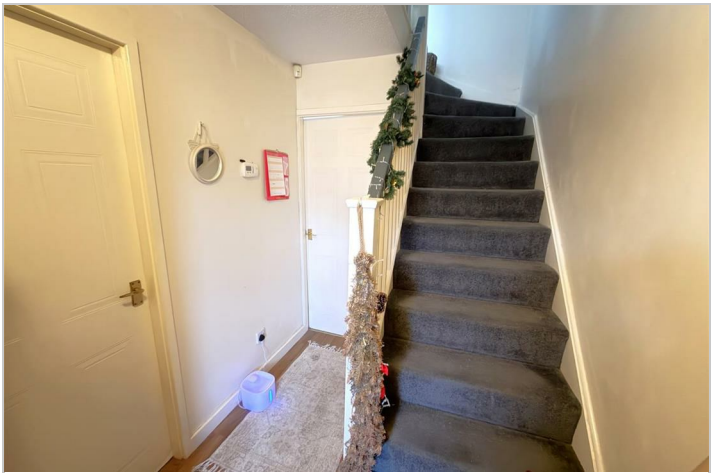
6'3" x 5'8" (1.91m x 1.73m)

Fitted to comprise a three piece suite consisting of a panel bath with electric shower over, low level pedestal, low level wash hand basin, radiator, double glazed window to side elevation.

Outside

Front: A low maintenance laid lawn leads to a driveway which provides off road parking, single garage with up and over door, and has gated access to the rear.

Rear: A patio area leads onto a good sized laid lawn and is enclosed by timber fencing to all sides. Gated access to front elevation.



Road Map



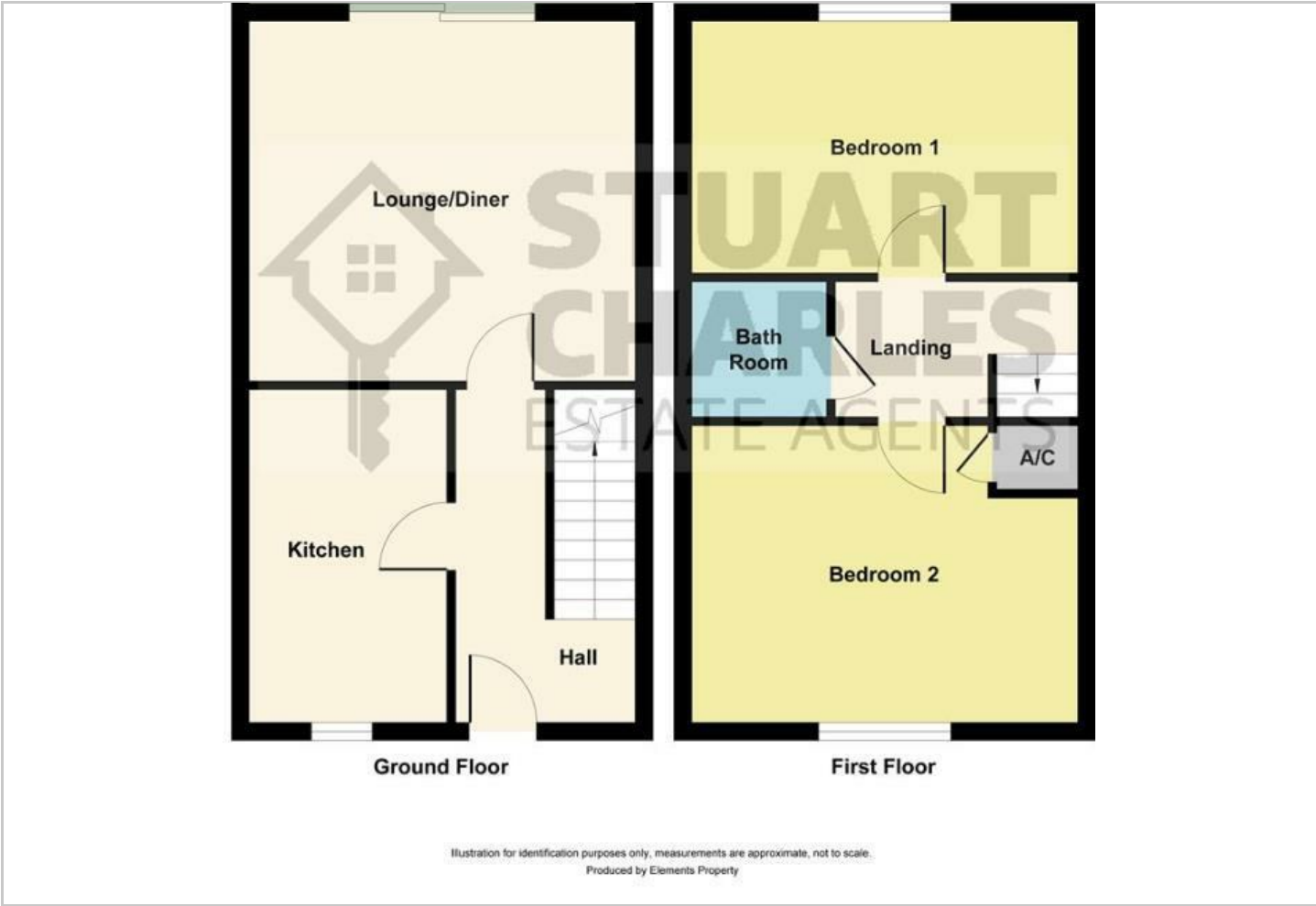
Hybrid Map



Terrain Map



Floor Plan



Viewing

Please contact our Stuart Charles Estate Agents Office on 01536 234264 if you wish to arrange a viewing appointment for this property or require further information.

Energy Efficiency Graph



These particulars, whilst believed to be accurate are set out as a general outline only for guidance and do not constitute any part of an offer or contract. Intending purchasers should not rely on them as statements of representation of fact, but must satisfy themselves by inspection or otherwise as to their accuracy. No person in this firms employment has the authority to make or give any representation or warranty in respect of the property.