



**STUART
CHARLES**
ESTATE AGENTS



Wentworth Drive

, Corby, NN17 5AQ

£145,000



Wentworth Drive

, Corby, NN17 5AQ

£145,000



Entrance Hall

Entered via a double glazed door, radiator, storage cupboard with space for condensing dryer, doors to:

Lounge/Diner

13'99 x 12'63 (3.96m x 3.66m)

Tv point, telephone point, radiator, double glazed window to front elevation, archway to:

Kitchen

12'63 x 6'12 (3.66m x 1.83m)

Fitted to comprise a range of base and eye level units with a one and a half bowl steel sink and drainer, gas hob with extractor, integrated fridge/freezer, integrated washer/dryer, integrated dishwasher, wall mounted combi boiler, double glazed window to rear elevation.

Bedroom One

10'63 x 8'87 (3.05m x 2.44m)

Double glazed window to front elevation, radiator, tv point, telephone point, door to:

En-Suite

5'68 x 3'56 (1.52m x 0.91m)

Fitted to comprise a three piece suite consisting of mains feed double shower cubicle, low level wash hand basin, low level pedestal, radiator, shaver point, extractor fan, double glazed window to front elevation.

Bedroom Two

10'37 x 7'51 (3.05m x 2.13m)

Double glazed window to rear elevation, radiator.

Bathroom

7'13 x 5'90 (2.13m x 1.52m)

Fitted to comprise a three piece suite consisting of a panel bath with a mixer shower tap, low level pedestal, low level wash hand basin, radiator, extractor fan, ceiling spotlights.

Outside

Rear: A large carpark features allocated parking for all the flats with several guest parking spaces and a secure bike storage area



Road Map



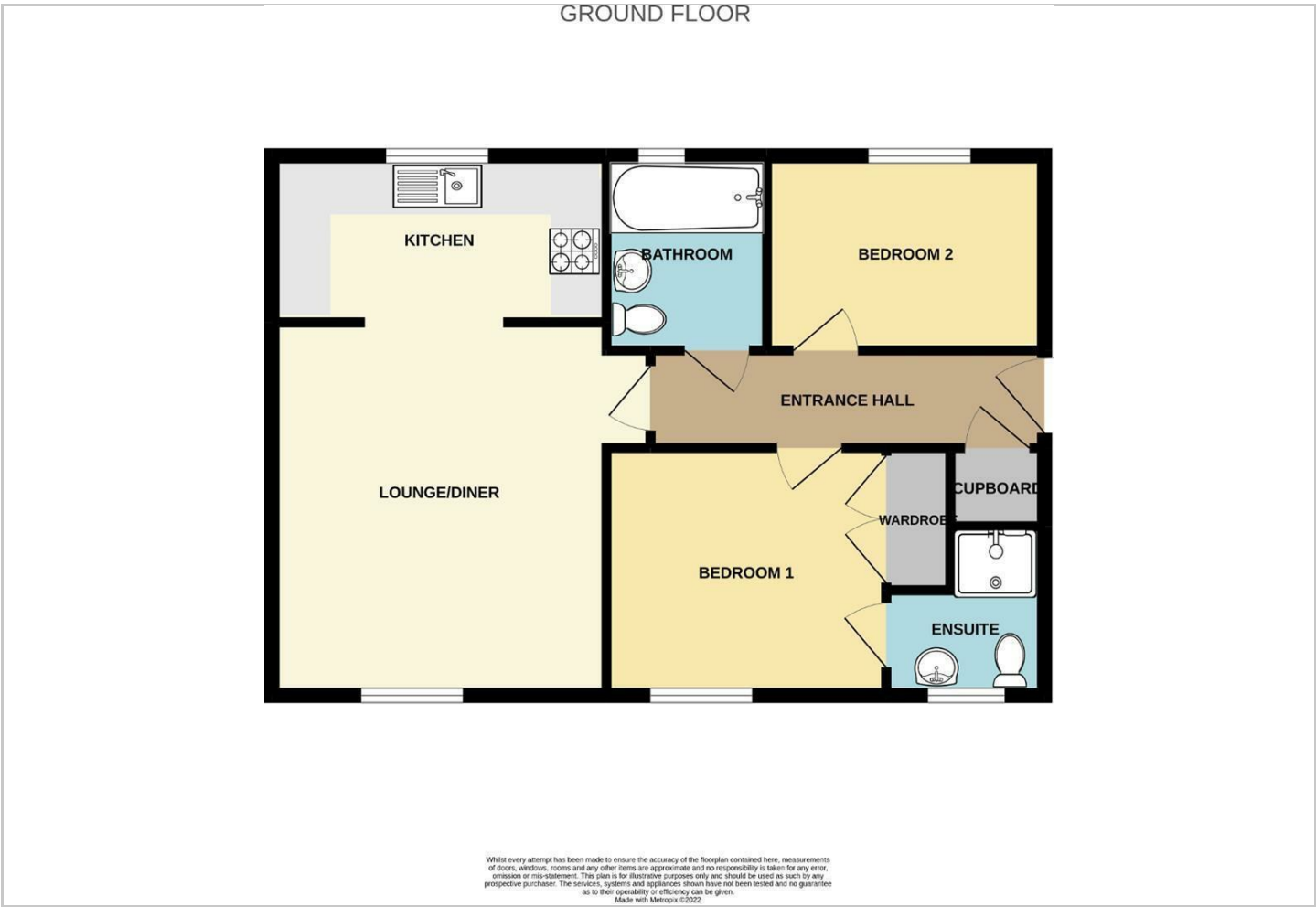
Hybrid Map



Terrain Map



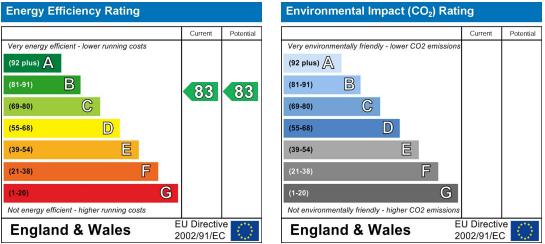
Floor Plan



Viewing

Please contact our Stuart Charles Estate Agents Office on 01536 234264 if you wish to arrange a viewing appointment for this property or require further information.

Energy Efficiency Graph



These particulars, whilst believed to be accurate are set out as a general outline only for guidance and do not constitute any part of an offer or contract. Intending purchasers should not rely on them as statements of representation of fact, but must satisfy themselves by inspection or otherwise as to their accuracy. No person in this firms employment has the authority to make or give any representation or warranty in respect of the property.