



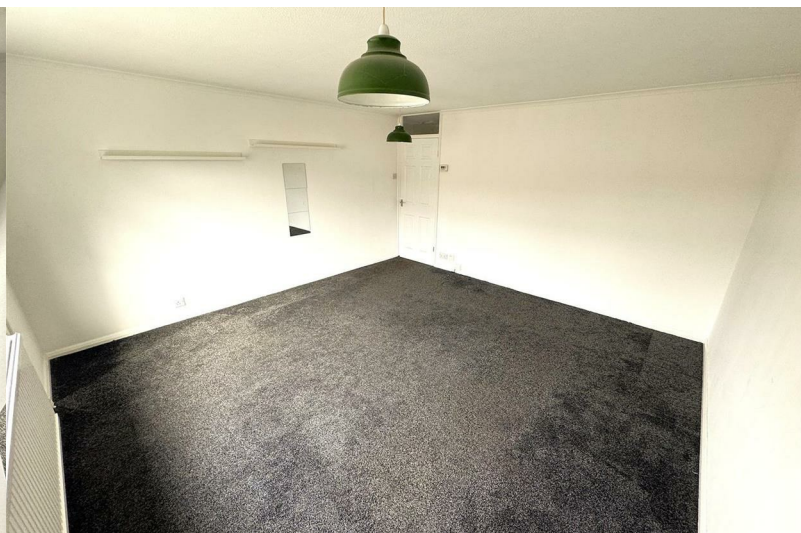
**STUART  
CHARLES**  
ESTATE AGENTS



## Kirkwall

, Corby, NN17 2QZ

£115,000



# Kirkwall

, Corby, NN17 2QZ

£115,000



## Entrance Hall

Entered via a double glazed door, radiator, two storage cupboards, doors to:

## Lounge/Diner

14'6 x 13'8 (4.42m x 4.17m)

Double glazed window to front elevation, radiator, Tv point, Telephone point.

## Bedroom One

11'9 x 8'6 (3.58m x 2.59m)

Double glazed window to side elevation, radiator.

## Kitchen

10'8 x 6'10 (3.25m x 2.08m)

Fitted to comprise a range of base and eye level units with a single steel sink and drainer, space for free standing cooker, space for automatic washing machine, space for free standing fridge/freezer, wall mounted boiler.

## Bathroom

6'2 x 5'6 (1.88m x 1.68m)

Fitted to comprise a three piece suite consisting of a panel bath with mixer shower tap, low level pedestal, low level wash hand basin, radiator, double glazed window to side elevation.

## Outside

A communal entrance way leads to stairs leading to the front door.



Road Map



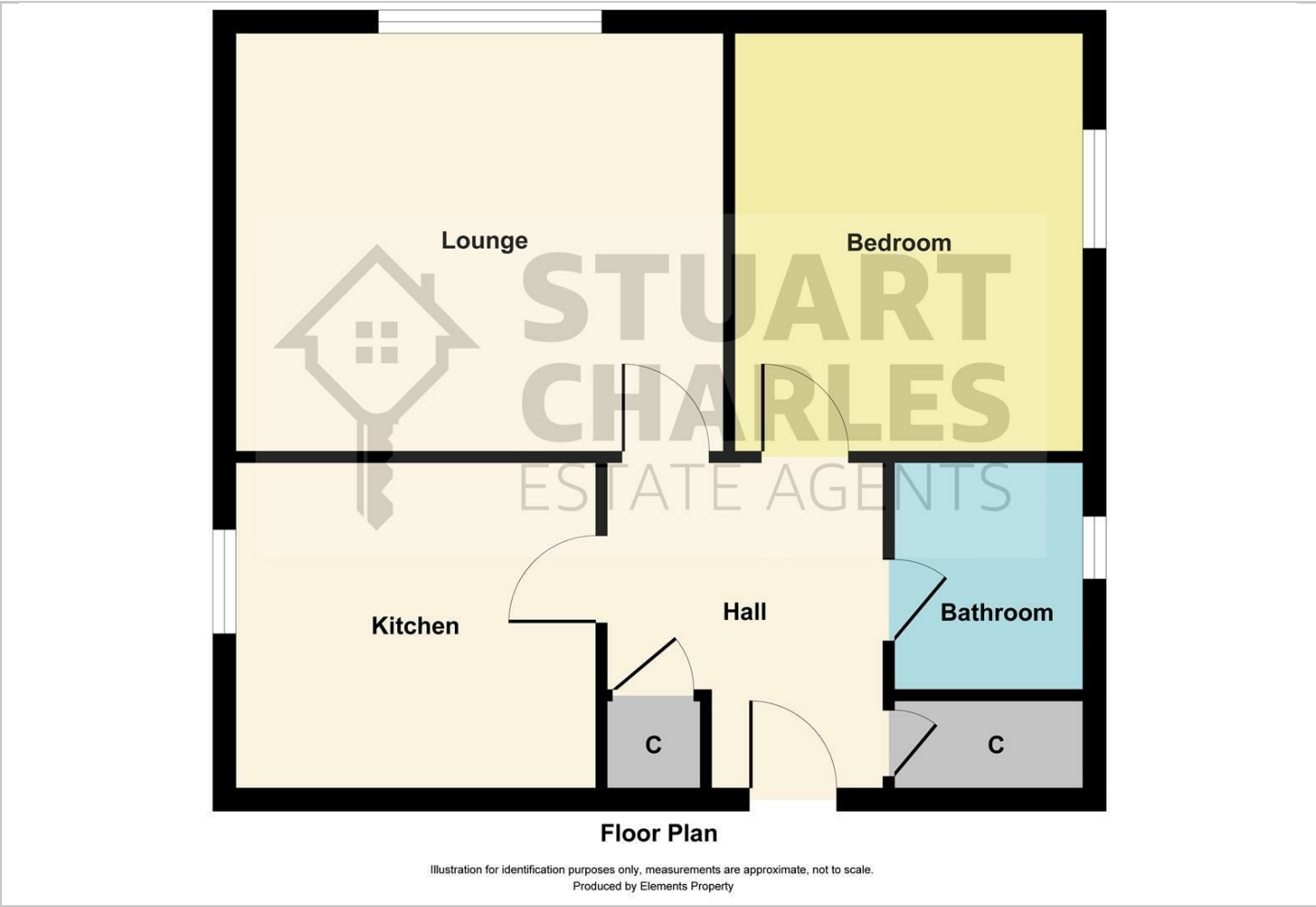
Hybrid Map



Terrain Map



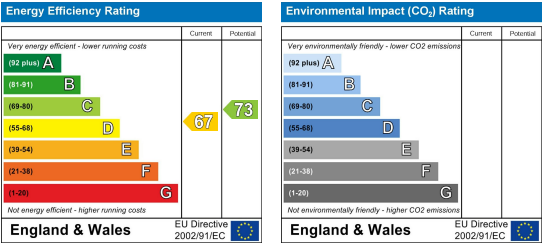
Floor Plan



Viewing

Please contact our Stuart Charles Estate Agents Office on 01536 234264 if you wish to arrange a viewing appointment for this property or require further information.

Energy Efficiency Graph



These particulars, whilst believed to be accurate are set out as a general outline only for guidance and do not constitute any part of an offer or contract. Intending purchasers should not rely on them as statements of representation of fact, but must satisfy themselves by inspection or otherwise as to their accuracy. No person in this firms employment has the authority to make or give any representation or warranty in respect of the property.