



7 Kirkwall, Corby, NN17 2QZ

£199,950

Stuart Charles are delighted to offer for sale with this three bedroom mid terrace home located in the Lodge park area of Corby. Located just a short walk from the local primary and secondary schools this home would make an ideal purchase for a first time buyer or investor. The accommodation on offer comprises an entrance hall with guest WC, lounge and an extended kitchen/diner with a host of integrated appliances. To the first floor are three good size bedrooms, a large storage cupboard and a four piece bathroom suite. To the front is a laid lawn with path to the front door. The rear garden has a patio leading to the laid lawn with a decking area, all enclosed by a timber fence surround, with side gated access. Call now to book a viewing!!

- THREE GOOD SIZE BEDROOMS
- READY TO MOVE INTO
- LOW MAINTENANCE GARDEN
- EXTENDED LIVING SPACE
- NEW COMBI BOILER
- DOWNSTAIRS GUEST WC
- WELL PRESENTED THROUGHOUT
- AMENITIES WITHIN WALKING DISTANCE
- CLOSE TO LOCAL SCHOOLS

Entrance Hall

Stairs rising to first floor landing, guest WC, radiator, doors to:

Guest WC

This two piece suite features a a low level wash hand basin, pedestal.

Lounge

18'2 x 13'5 (5.54m x 4.09m)

Double glazed window to the front elevation, double glazed French doors

to the rear elevation, radiators, Tv and Telephone points.

Kitchen/Diner

18'2 x 9'10 (5.54m x 3.00m)

Fitted to comprise a range of base and eye level units with a one bowl sink and drainer, integrated dishwasher, integrated washing machine, integrated cooker, integrated fridge/freezer, radiator, double glazed window to the rear elevation, double glazed French door to rear, doors to:







Landing

Airing cupboard, storage cupboard, double glazed window to the front, loft access, doors to:

Bedroom One

17'7 x 9'11 (5.36m x 3.02m)

Double glazed window to the rear elevation, radiator.

Bedroom Two

10'8 x 9'10 (3.25m x 3.00m)

Double glazed window to the front elevation, radiator.

Bedroom Three

8'8 x 7'5 (2.64m x 2.26m)

Double glazed window to the rear elevation, radiator.





Bathroom

8'7 x 6'9 (2.62m x 2.06m)

Featuring a four piece bathroom suite comprising a low level bath, separate mains feed shower cubicle, low level pedestal, low level wash hand basin, radiator, double glazed window the rear elevation.

Outside

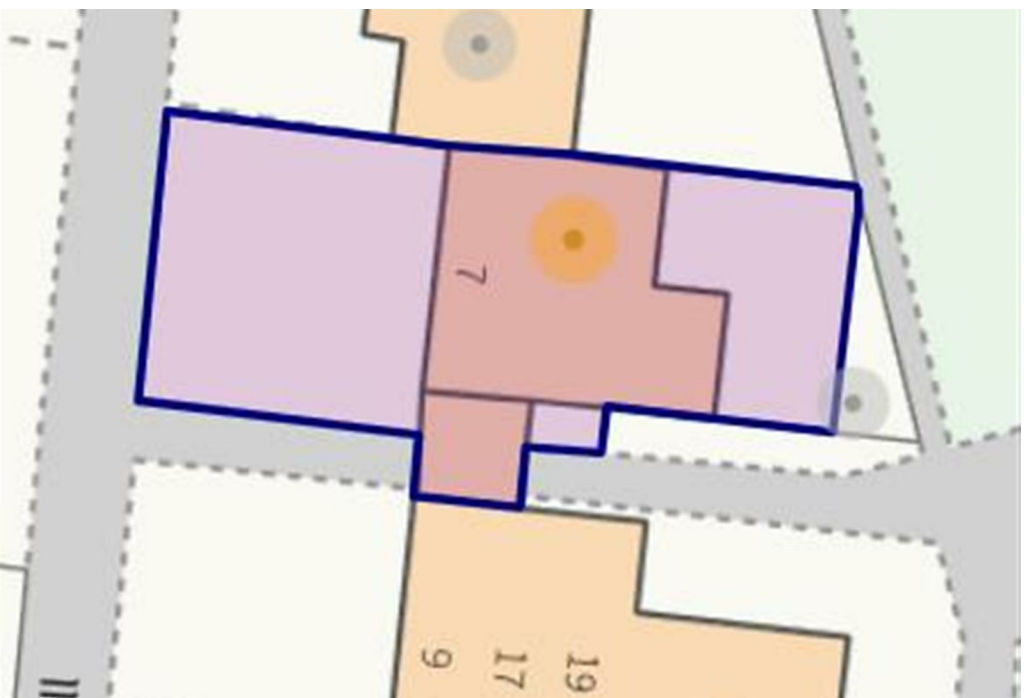
To the front is a laid lawn with path to the front door.

The rear garden has a patio leading to the laid lawn with a decking area, all enclosed by a timber fence surround, with side gated access

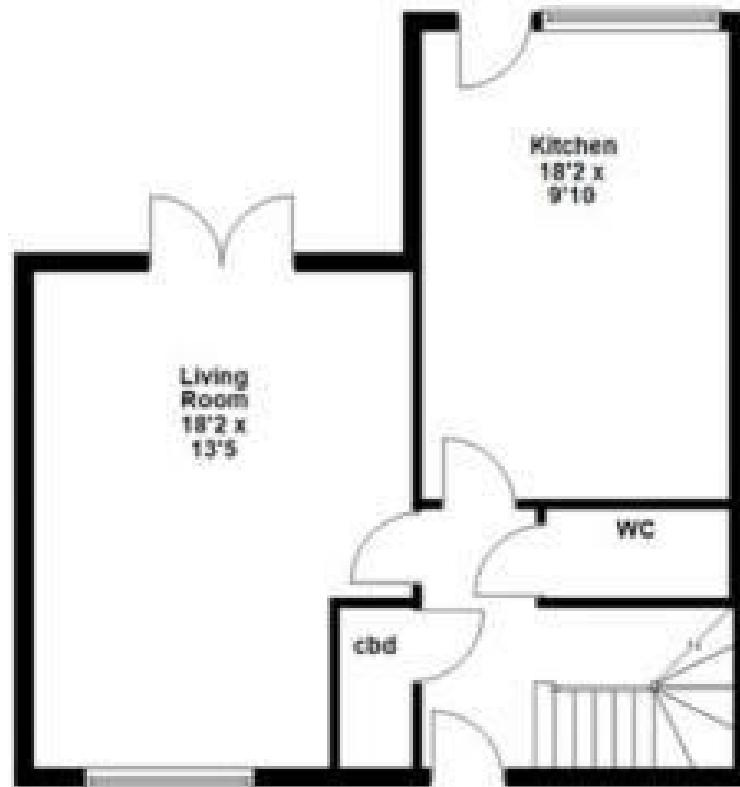








Ground Floor



First Floor

