



56 Farnborough Close, Corby, NN18 8PW

£219,950

Stuart Charles are delighted to offer for sale with this THREE bedroom family home located in the Oakley vale area of Corby. Situated just a short walk from a host of amenities to include primary and secondary schools in addition to being walking distance to a local shopping parade, an early viewing is recommended to avoid missing out on this home. The property has been updated in the past few years including windows, boiler, bathroom ,W.C. and conservatory. The accommodation comprises to the ground floor of a large entrance hall, kitchen/breakfast, guest W.C, large lounge and a newly built conservatory. To the first floor are three good size bedrooms and a modern three piece family shower room. Outside to the front is a pebbled area with a paved walkway leading to the front entrance. while to the rear is a patio area leads onto a low maintenance laid lawn and to the gated rear access. To the side of the property is an allocated parking space. Call now to view!!.

- IMMACULATE CONDITION
- KITCHEN/BREAKFAST ROOM
- NEW CONSERVATORY
- MODERN SHOWER ROOM
- WALKING DISTANCE TO LOCAL PRIMARY AND SENIOR SCHOOLS
- GUEST W.C.
- SPACIOUS LOUNGE
- THREE GOOD SIZED BEDROOMS
- ALLOCATED PARKING SPACE
- WALKING DISTANCE TO LOCAL SHOPPING PARADE

Entrance Hall

Entered via a double glazed front door, radiator, under stair storage cupboard, stairs rising to first floor landing.

Kitchen/Breakfast Room

Fitted to comprise a range of base and eye level units, one and a half bowl steel sink and drainer, electric oven, gas hob, space for freestanding fridge freezer, wall mounted boiler, radiator,

Living Room

Under stair storage, radiator, tv point, double glazed patio doors to rear elevation.

W.C.

Fitted to comprise of a low level pedestal, low level hand wash basin, extractor, radiator.

Conservatory

Double glazed windows to all sides,







double glazed french doors to rear elevation.

First floor landing

radiator, airing cupboard.

Bedroom One

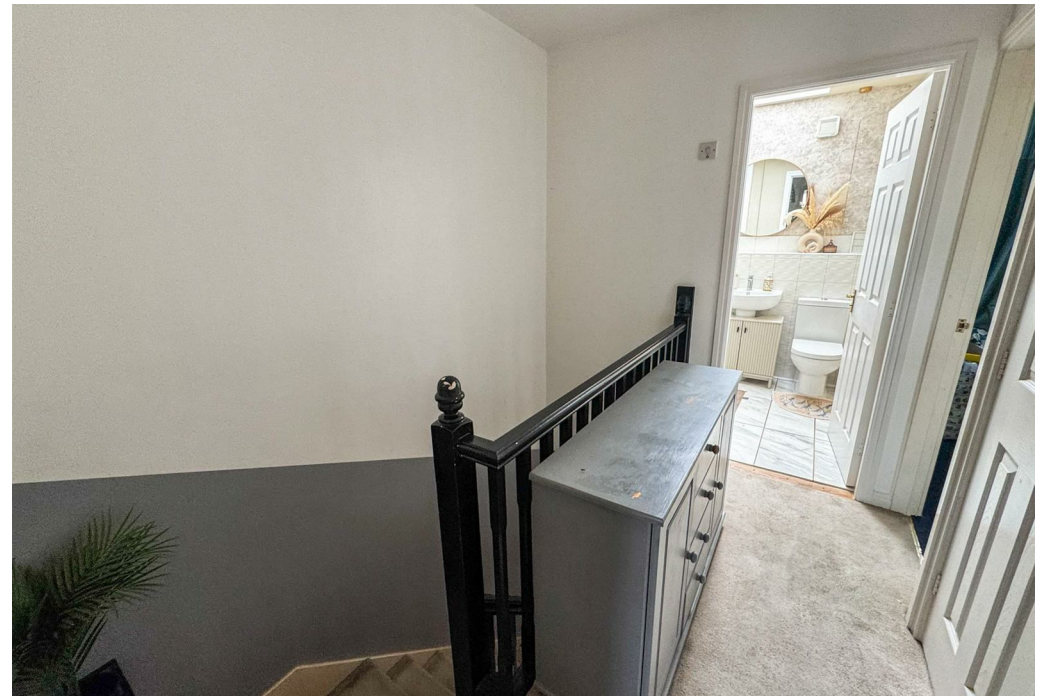
Radiator, double glazed window to rear elevation.

Bedroom Two

Radiator, double glazed window to front elevation.

Bedroom Three

Radiator, double glazed window to rear elevation.





Bathroom

Fitted to comprise a white three piece suit consisting of a low level pedestal, low level hand wash basin, walk in shower with overhead system shower, radiator, velux window.

Outside

Front - a low maintenance pebbled area with a paved walkway leading to the front entrance.

Rear - A mixture of a patio seating area leading to a low maintenance laid lawn, a timber gate providing rear access, enclosed to all sides by timber fencing.

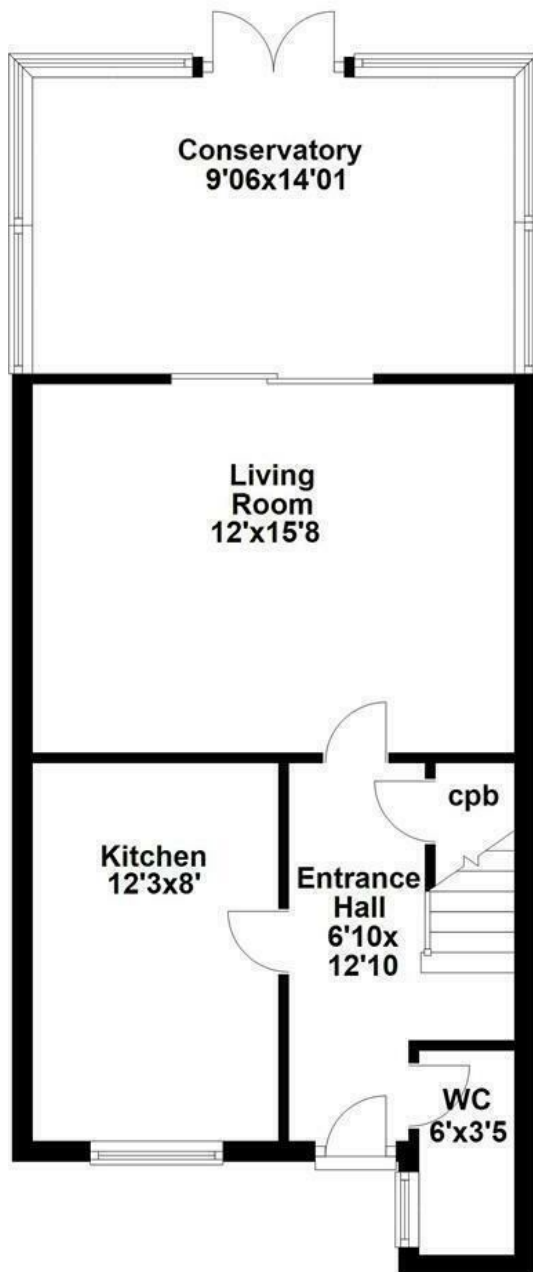
Parking - An allocated parking space to the side elevation of the property.



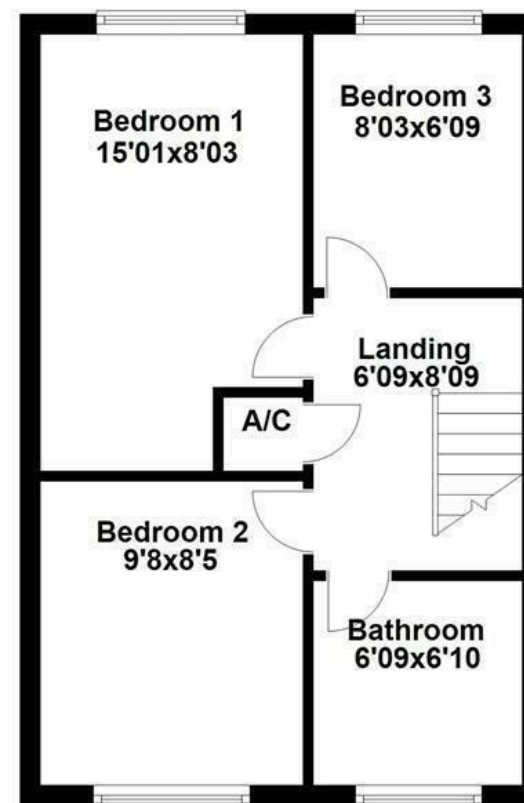




Ground Floor



First Floor



Floor plan not to scale - for guidance purposes only.
Plan produced using PlanUp.

