



**STUART  
CHARLES**  
ESTATE AGENTS



## Clovelly Court

, Corby, NN18 8EF

£190,000



# Clovelly Court

, Corby, NN18 8EF

£190,000



## Entrance Hall

Entered via a double glazed door, radiator, stairs leading to first floor landing, doors to:

## Kitchen

15'3" x 8'2" (4.67m x 2.51m)

Fitted to comprise a range of base and eye level units with a steel sink and drainer, free standing oven, space for automatic washing machine, space for free standing fridge freezer, under stairs storage, double glazed window to rear elevation.

## Lounge/Diner

19'7" x 11'6" (5.97m x 3.51m)

Double glazed window to front elevation and rear elevation, radiator, tv point, telephone point, french doors to conservatory;

## Conservatory

Double glazed windows to all sides, double glazed French doors to rear elevation

## Landing

Airing cupboard, doors to:

## Bedroom One

11'1" x 10'0" (3.38m x 3.07m)

Double glazed window to front elevation, radiator,

## Bedroom Two

10'2" max x 8'2" max (3.12m max x 2.49m max)

Double glazed window to front elevation, radiator.

## Bedroom Three

11'5" x 7'6" (3.48m x 2.29m)

Double glazed window to front elevation, radiator.

## Bathroom

Fitted to comprise a three piece suite featuring a panel bath, low level pedestal, low level wash hand basin, radiator, double glazed window to rear elevation.

## Outside

Front - Low maintenance laid lawn with concrete walkway leading to side gate and side elevation.

Rear - A large south facing laid lawn, patio, two wooden sheds, enclosed to all sides by timber fencing



### Road Map



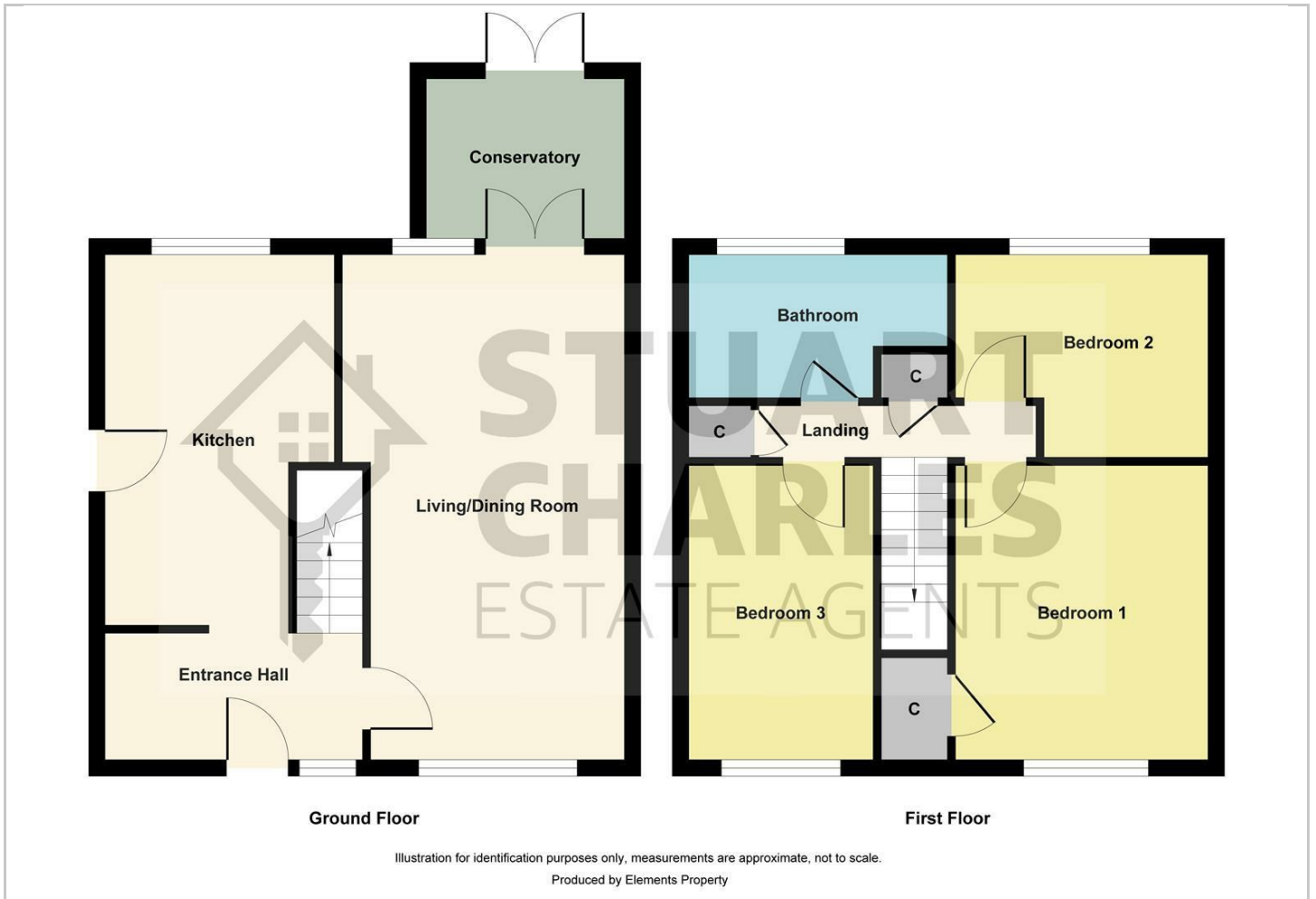
### Hybrid Map



### Terrain Map



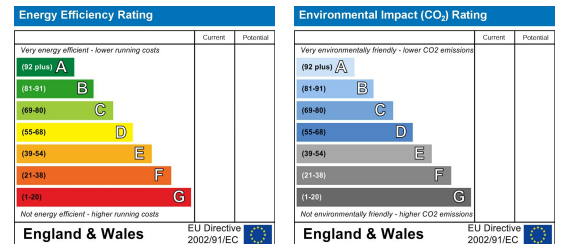
### Floor Plan



### Viewing

Please contact our Stuart Charles Estate Agents Office on 01536 234264 if you wish to arrange a viewing appointment for this property or require further information.

### Energy Efficiency Graph



These particulars, whilst believed to be accurate are set out as a general outline only for guidance and do not constitute any part of an offer or contract. Intending purchasers should not rely on them as statements of representation of fact, but must satisfy themselves by inspection or otherwise as to their accuracy. No person in this firm's employment has the authority to make or give any representation or warranty in respect of the property.