



**STUART  
CHARLES**  
ESTATE AGENTS



## Rowlett Road

, Corby, NN17 2BY

£132,500





# Rowlett Road

, Corby, NN17 2BY

£132,500



## Entrance hall

Entered via a double glazed door, radiator, storage cupboard, doors to:

## Kitchen

7'5 x 8'5 (2.26m x 2.57m)

Fitted to comprise a range of base units with a single steel sink and drainer, gas cooker with hob and extractor, electric oven, space for washing machine and freestanding fridge/freezer, radiator, double glazed window to front elevation, wall mounted boiler.

## Living Room

12'10 x 14'5 (3.91m x 4.39m)

Double glazed French door to the rear balcony, tv point, internet and telephone point, radiator.

## Bedroom 1

12'10 x 9'10 (3.91m x 3.00m)

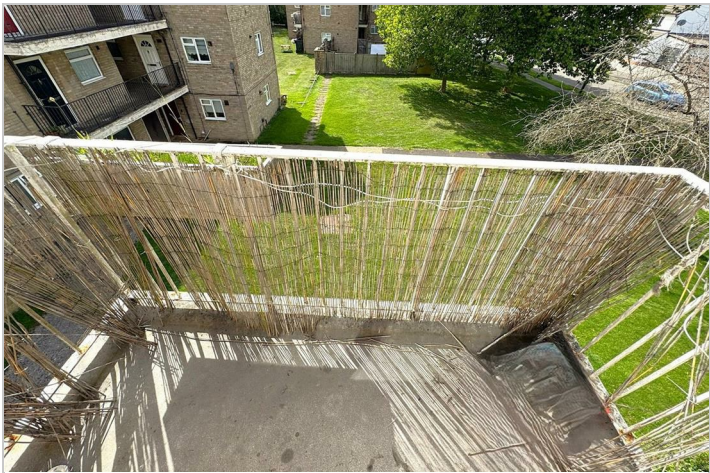
Double glazed window to side elevation, radiator, two built in wardrobes.

## Bathroom

Featuring a three piece suite comprising double shower cubicle, low level wash hand basin, low level pedestal, radiator, double glazed window to front elevation.

## Outside

Front: A shared drying area leads to a large storage barn.



Road Map



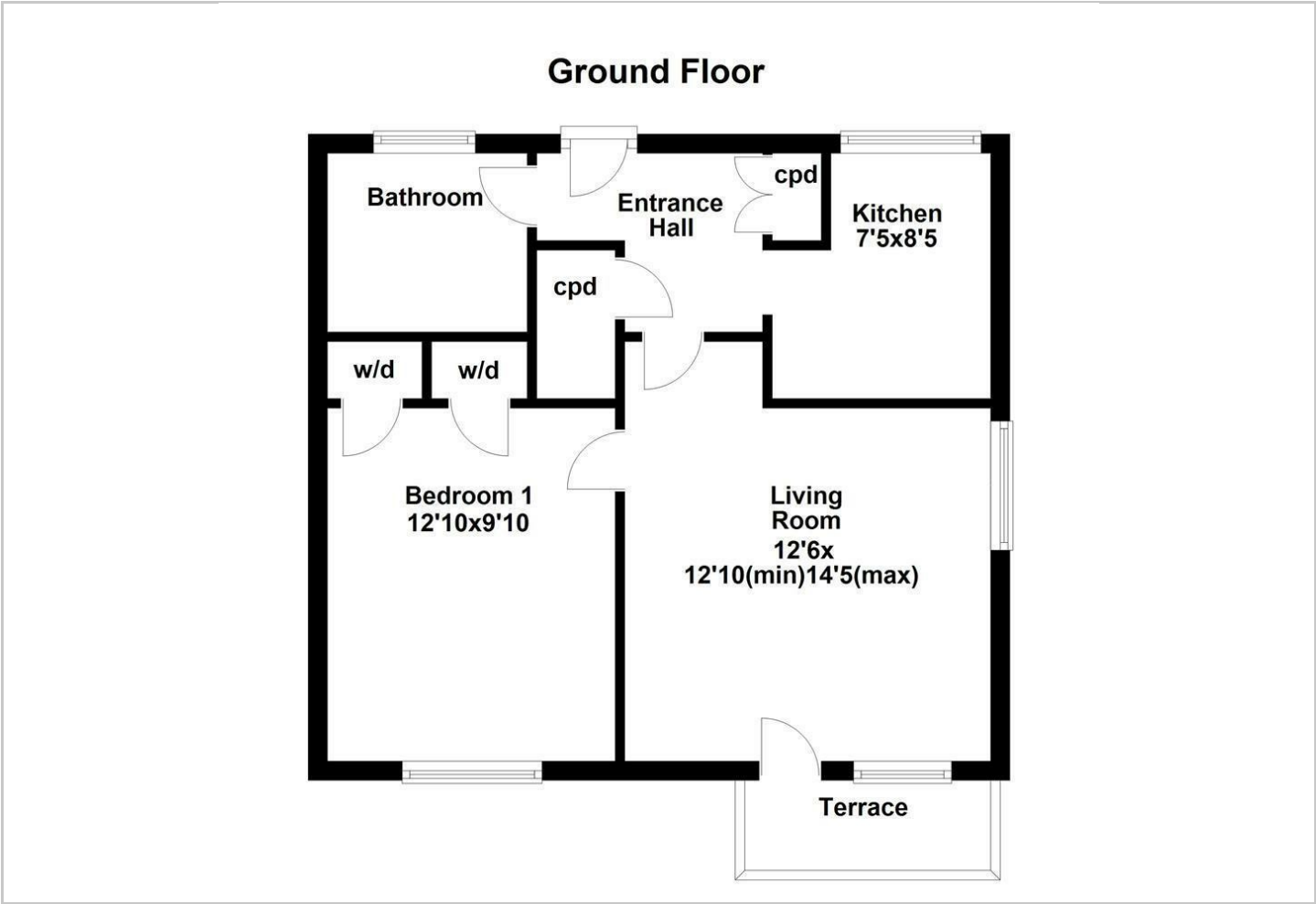
Hybrid Map



Terrain Map



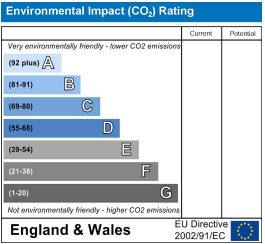
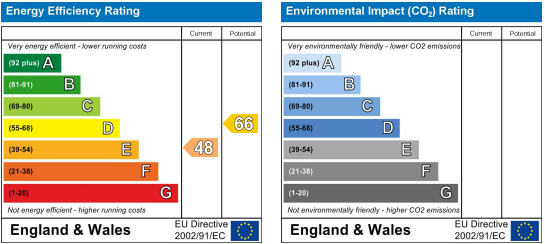
Floor Plan



Viewing

Please contact our Stuart Charles Estate Agents Office on 01536 234264 if you wish to arrange a viewing appointment for this property or require further information.

Energy Efficiency Graph



These particulars, whilst believed to be accurate are set out as a general outline only for guidance and do not constitute any part of an offer or contract. Intending purchasers should not rely on them as statements of representation of fact, but must satisfy themselves by inspection or otherwise as to their accuracy. No person in this firm's employment has the authority to make or give any representation or warranty in respect of the property.