



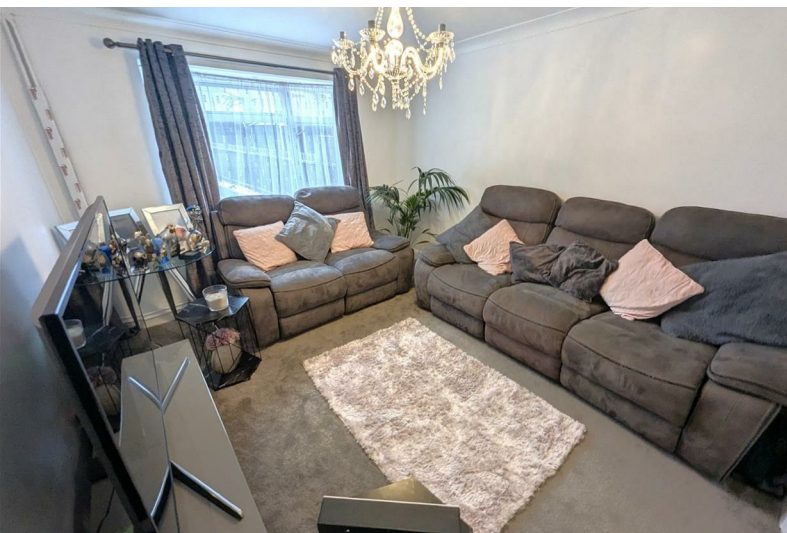
**STUART  
CHARLES**  
ESTATE AGENTS



## Sedbergh Road

, Corby, NN18 0NT

£1,000





# Sedbergh Road

, Corby, NN18 0NT

£1,000



## Entrance Hall

Radiator, stairs to first floor landing with understairs cupboard, laminate flooring, doors to.

## Lounge

12'0" x 10'2" (3.66m x 3.12m)

Window to front aspect, radiator.

## Kitchen

11'1" x 9'1" (3.4m x 2.79m)

Comprising single drainer stainless steel sink unit with cupboards under, range of base and eye level units providing work surfaces, electric hob and integrated cooker, plumbing for washing machine, space for fridge freezer, window to front aspect, door to side aspect, wall mounted gas fired boiler serving central heating and domestic hot water.

## Dining Room

12'0" x 11'1" (3.68m x 3.4m)

Patio door to rear garden, radiator.

## Guest WC

Comprising low flush W.C., obscure glazed window to front aspect.

## Landing

Access to loft space, door to.

## Bedroom One

13'3" x 9'10" (4.06m x 3.02m)

Window to rear aspect, radiator.

## Bedroom Two

13'3" x 8'0" (4.04m x 2.44m)

Window to front aspect, radiator.

## Bedroom Three

11'6" x 8'11" (3.53m x 2.72m)

Window to rear aspect, radiator, built in cupboard.

## Bathroom

8'1 x 4'10 (2.46m x 1.47m)

Comprising panelled bath, low flush W.C., wash basin, obscure glazed window to front aspect, radiator.

## Outside



Road Map



Hybrid Map



Terrain Map



Floor Plan



Viewing

Please contact our Stuart Charles Estate Agents Office on 01536 234264 if you wish to arrange a viewing appointment for this property or require further information.

Energy Efficiency Graph



These particulars, whilst believed to be accurate are set out as a general outline only for guidance and do not constitute any part of an offer or contract. Intending purchasers should not rely on them as statements of representation of fact, but must satisfy themselves by inspection or otherwise as to their accuracy. No person in this firms employment has the authority to make or give any representation or warranty in respect of the property.