



1 Yates Close, Weldon, Corby, NN17 3LS



£210,000

Stuart Charles are delighted to offer FOR SALE this TWO DOUBLE bedroom home located in the Weldon park area of Corby. Located at the bottom off a quiet cul-de-sac and offered to a high standard an early viewing is recommended to avoid missing out on this home. The accommodation to the ground floor comprises of an entrance hall, W.C, lounge and kitchen/diner. To the first floor are two double bedrooms and a three-piece family bathroom. Outside to the front off road parking is provided while to the rear there is two patio areas that leads onto a low maintenance artificial lawn, with timber fence surround, and side gated access to the front. Call now to book a viewing!!

- TWO DOUBLE BEDROOMS
- GUEST WC AND THREE PEICE FAMILY BATHROOM
- GOOD SIZED REAR GADEN
- CLOSE TO WELDON ACADEMY
- CLOSE TO MAIN BUS LINK
- KITCHEN/DINER TO THE REAR
- OFF ROAD PARKING FOR TWO VEHICLES
- WALKING DISTANCE TO SHOPS
- WALKING DISTANCE TO PRIMARY SCHOOL
- NO CHAIN

Entrance Hall

Entered via a double glazed door, radiator, stairs rising to first floor landing, doors to:

Guest W.C

Featuring a two piece suite with a low level pedestal, low level wash hand basin, radiator, double glazed window to front elevation.

Lounge

14'8 x 9'5 (4.47m x 2.87m)

Double glazed window to front elevation, radiator, tv point, telephone point, under stairs storage, door to:

Kitchen/Diner

12'3 x 7'7 (3.73m x 2.31m)

Featuring a range of base and eye level units with a one and a half bow steel sink and drainer, gas hob with electric oven and extractor, space for







automatic washing machine, space for dishwasher, space for free standing fridge/freezer, radiator, wall mounted combi boiler, double glazed window to rear, double glazed French doors to rear.

First Floor Landing

Bedroom One

11'9 x 7'7 (3.58m x 2.31m)

Double glazed window to rear, tv point, radiator.

Bedroom Two

12'3 x 8'2 (3.73m x 2.49m)

Two double glazed windows to front elevation, radiator, built in wardrobe.





Bathroom

5'9 x 5'1 (1.75m x 1.55m)

Featuring a three piece suite with a panel bath and mains feed shower over, low level wash hand basin, low level pedestal, radiator, double glazed window to side elevation.

Outside

Front: Consisting of a low maintenance paved area.

Rear: A patio area leads onto a laid lawn and is enclosed by timber fencing to all sides.

Please Note

There is a service charge for this property for the upkeep of the area if you'd like more information on this charge please don't hesitate to give us a call.

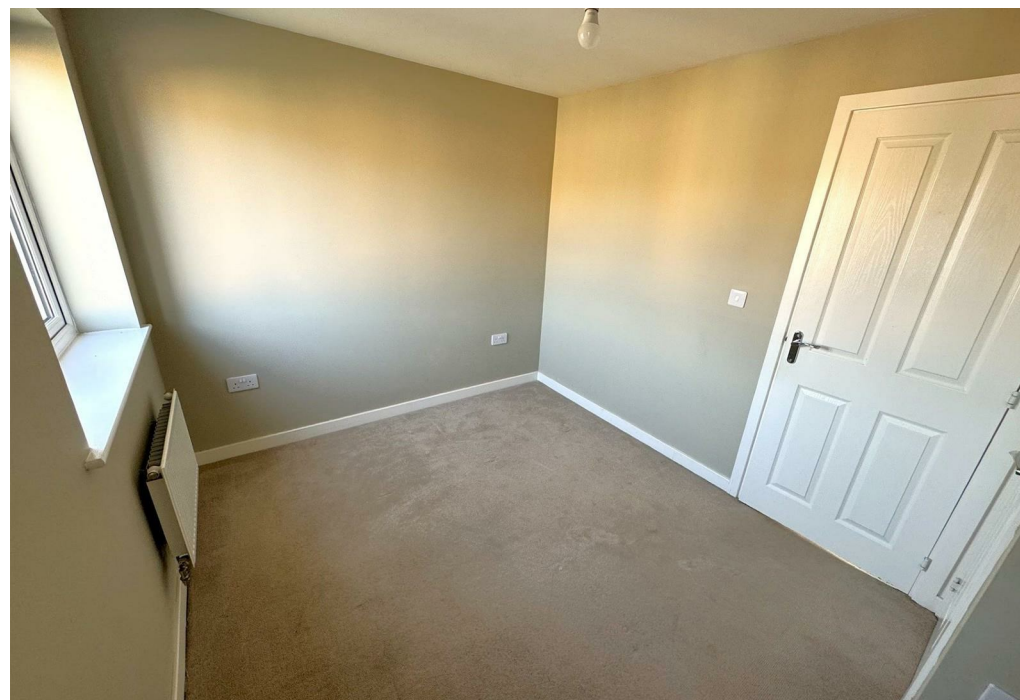
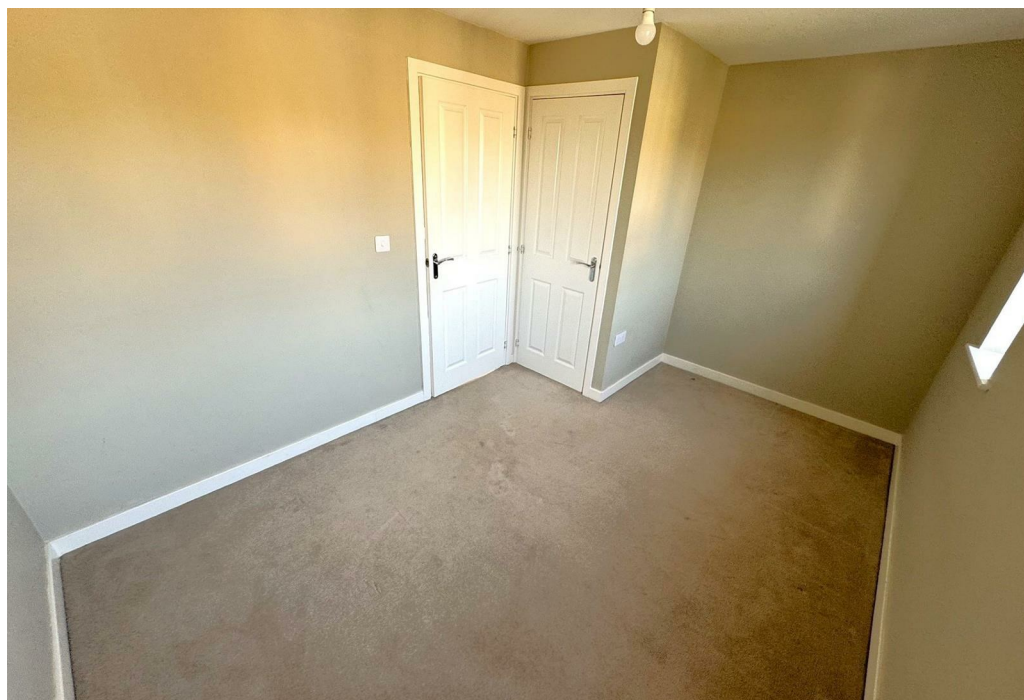










Illustration for identification purposes only, measurements are approximate, not to scale.
Produced by Elements Property

