



**STUART  
CHARLES**  
ESTATE AGENTS



## Newark Drive

, Corby, NN18 0ET

£1,000 Per month





# Newark Drive

, Corby, NN18 0ET

£1,000 Per month



## Entrance Hall

Entered via a double glazed door, radiator, stairs rising to first floor landing, door to:

## Lounge/Diner

20'7 x 9'4 (6.27m x 2.84m)

Double glazed window to front elevation, two radiators, tv point, telephone point, double glazed patio door to rear elevation, door to:

## Kitchen/Breakfast

20'7 x 10'3 (6.27m x 3.12m)

Fitted to comprise a range of base of base and eye level units with a single sink and drainer, space for free standing cooker, space for automatic washing machine, space for free standing fridge/freezer, double glazed window and door to rear elevation, under stairs storage, double glazed door to rear elevation.

## First Floor Landing

Loft access, airing cupboard, door to:

## Bedroom One

11'0 x 10'2 (3.35m x 3.10m)

Double glazed window to front elevation, radiator, built in wardrobe.

## Bedroom Two

10'10 x 7'10 (3.30m x 2.39m)

Double glazed window to rear elevation, radiator.

## Bedroom Three

11'3 x 7'0 (3.43m x 2.13m)

Double glazed window to front elevation, radiator.

## Bathroom

Fitted to comprise three piece suite consisting of a panel bath with mains feed shower over, low level wash hand basin, low level pedestal, radiator, double glazed window to rear.

## Outside

Front: A laid lawn is enclosed by low level wall to all sides.

Rear: A patio area leads onto a laid lawn and is enclosed by timber fencing to all sides.



Road Map



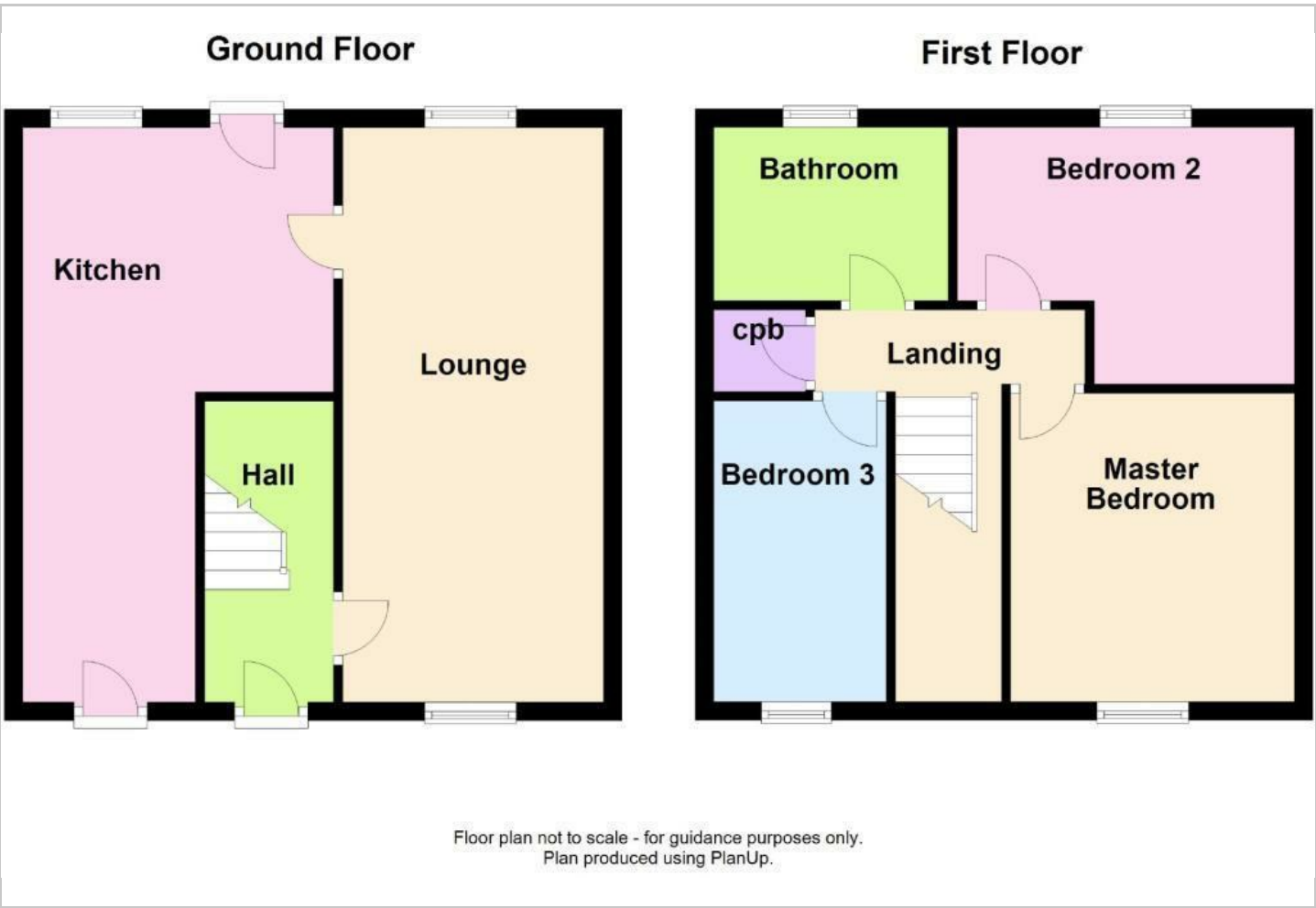
Hybrid Map



Terrain Map



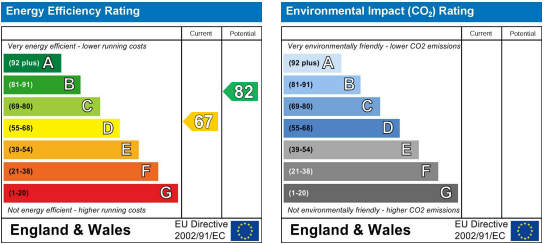
Floor Plan



Viewing

Please contact our Stuart Charles Estate Agents Office on 01536 234264 if you wish to arrange a viewing appointment for this property or require further information.

Energy Efficiency Graph



These particulars, whilst believed to be accurate are set out as a general outline only for guidance and do not constitute any part of an offer or contract. Intending purchasers should not rely on them as statements of representation of fact, but must satisfy themselves by inspection or otherwise as to their accuracy. No person in this firms employment has the authority to make or give any representation or warranty in respect of the property.