



4 Eydon Drive, Corby, NN17 5FB



**STUART
CHARLES**
ESTATE AGENTS

£265,000

Stuart Charles is delighted to offer for sale this four bedroom three storey home located in the in Priors Hall area of Corby. Situated a short walk away from both primary and secondary schools and the main shopping parade an early viewing is recommended to avoid missing out on this home. The accommodation to the ground floor comprises of a large entrance hall, W.C, kitchen/diner and lounge with French doors onto the garden. To the first floor are three bedrooms and the family bathroom. To the second floor which is devoted solely to the master bedroom and en suite with dual aspect windows providing a lot of natural light. To the rear the garden features a large patio area which leads onto laid lawn and to a decking area at the rear, the whole garden is enclosed by timber fencing to all sides with rear gated access leading to the garage. Call now to book a viewing!!!

- MASTER SUITE!!!
- THREE DOUBLE BEDROOMS!!!
- WELL PRESENTED THROUGHOUT!!!
- GARAGE AND DRIVE-WAY!!!
- CLOSE TO LOCAL PARKS!!!
- READY TO MOVE INTO!!!

Entrance Hall

Stairs rising to first floor landing with understairs storage cupboard, telephone point, radiator, doors to

Guest WC

Fitted with a low level pedestal with wash hand basin with chrome mixer tap, splashback tiling, radiator, extractor.

Kitchen

14'0" x 8'11" (4.27m x 2.74m)

Double glazed window to front elevation, fitted with a range of base and eye level units, complementary worksurfaces and tiling, one and a half sink and drainer with chrome mixer tap, integrated double oven, electric hob with stainless steel extractor hood, plumbing for automatic washing machine, space for American style fridge/freezer, radiator.







Lounge

16'0" x 12'0" (4.88m x 3.66m)

Double glazed window to rear elevation, double glazed double French doors to rear elevation, TV point, radiator.

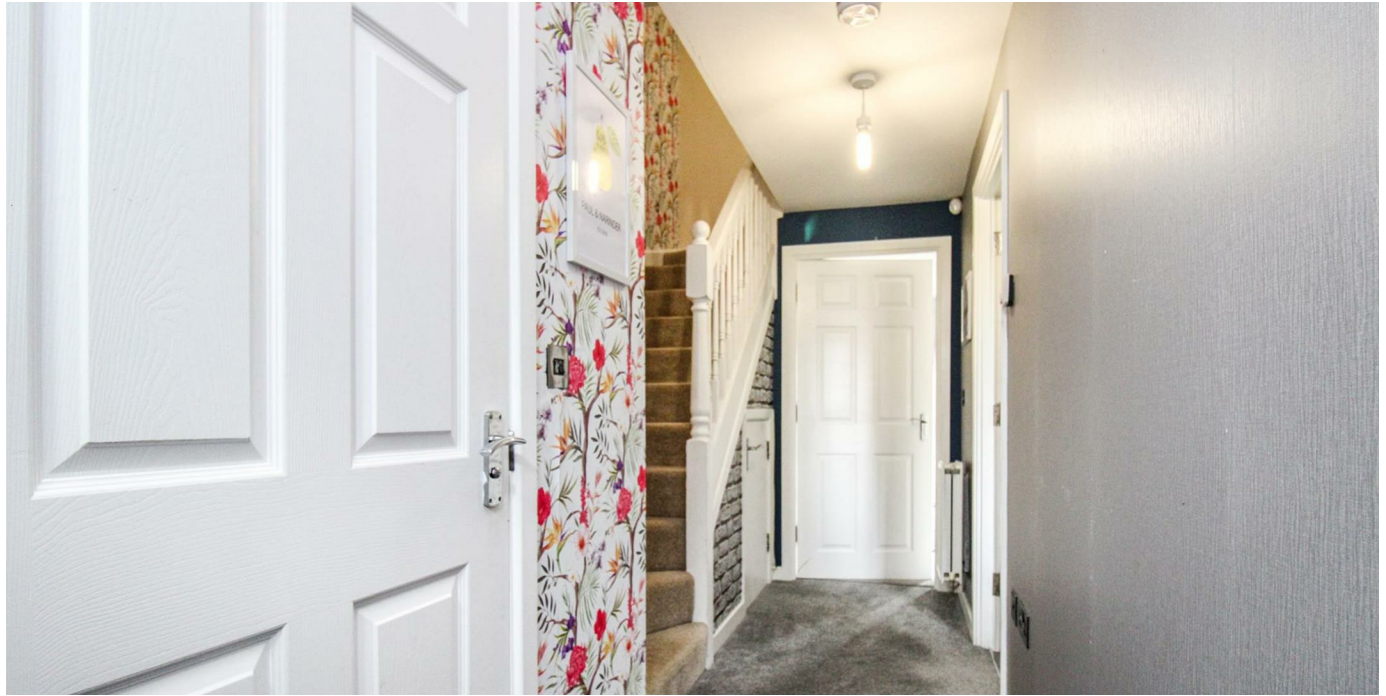
First Floor Landing

Airing cupboard, stairs rising to second floor landing, doors to:

Bedroom Two

14'0" x 9'1" (4.27m x 2.77m)

Double glazed window to front elevation, radiator.





Bedroom Three

12'0" x 8'11" (3.66m x 2.74m)

Double glazed window to rear elevation, radiator.

Bedroom Four

8'0" x 6'0" (2.46m x 1.85m)

Double glazed window to rear elevation, radiator.

Bathroom

Obscure double glazed window to front elevation, bath with chrome mixer tap and shower attachment, low level WC, pedestal wash hand basin, radiator, splashback tiling, extractor.

Second Floor Landing

Radiator, door to:





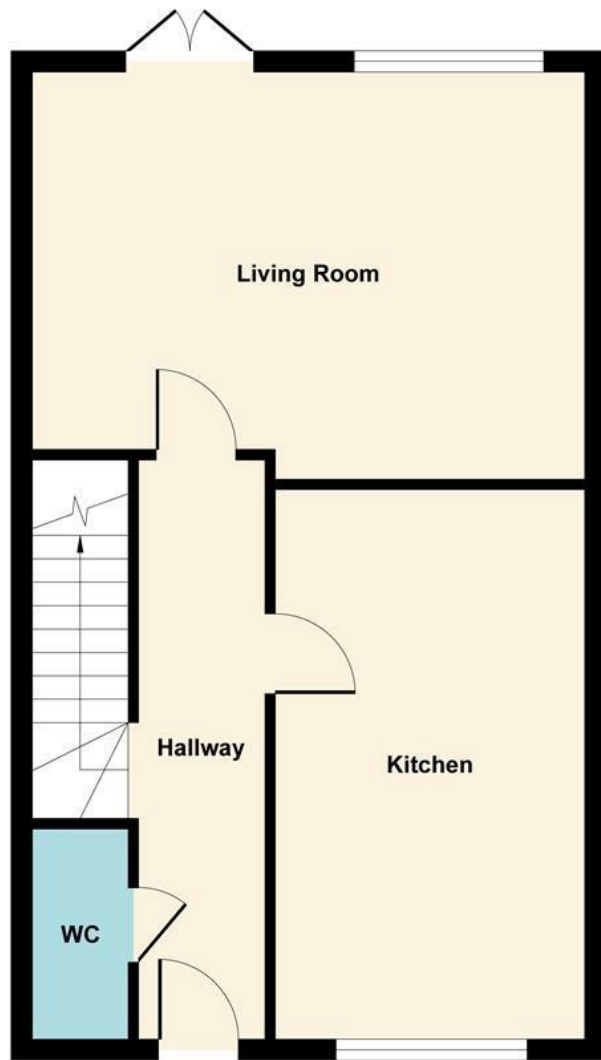
Master Suite

16'11" x 10'0" (5.18m x 3.07m)

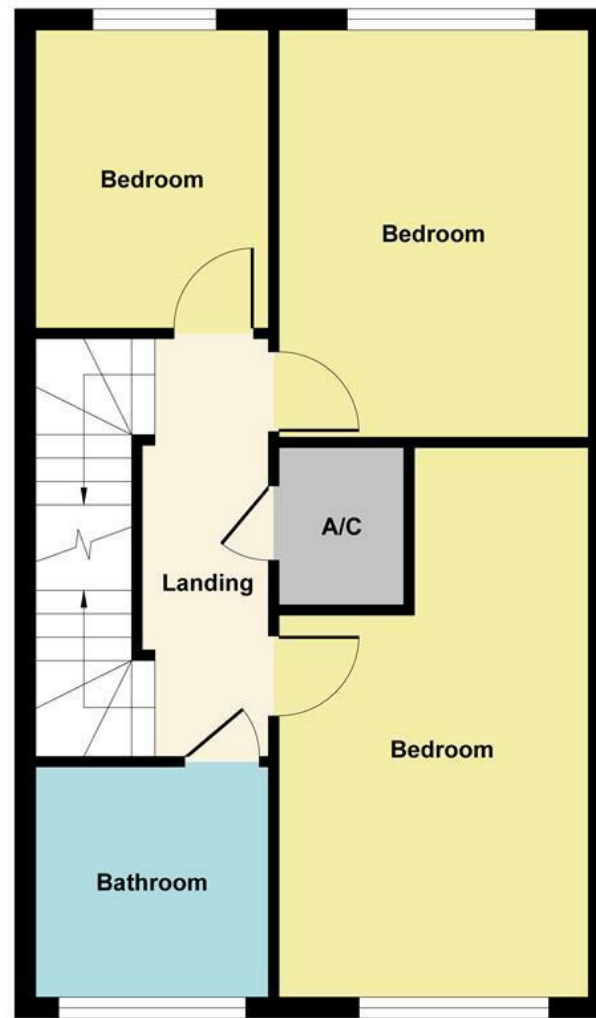
Double glazed window to front and rear elevations,
two built in wardrobes, TV point, radiator, door to

En-Suite

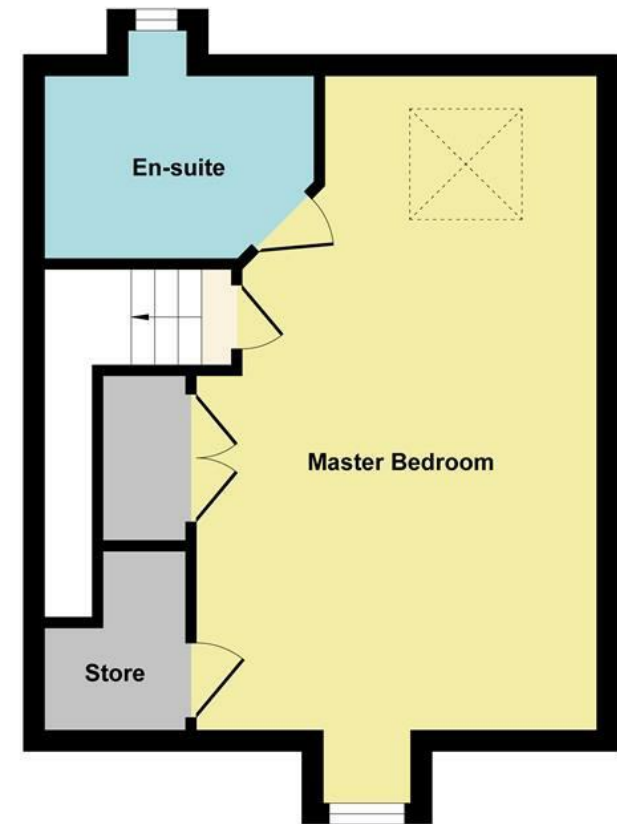
Obscure double glazed window to rear elevation,
shower cubicle with chrome mixer shower, pedestal,
wash hand basin with chrome mixer tap, radiator,
shaving point, extractor, half tiling.



Ground Floor



First Floor



Second Floor

Illustration for identification purposes only, measurements are approximate, not to scale.
Produced by Elements Property

Outside

Divided into three sections to include patio seating area, lawn and raised decking area with loose slate borders, enclosed by wooden panel fencing with gated pedestrian access leading to the driveway and garage.

Garage

Up and over doors, power and lights.

