



15 Selsey Road, Corby, NN18 0JT

£185,000

Stuart Charles are delighted to offer for sale with NO CHAIN this three bedroom home located in the ever popular Beanfield area of Corby. Situated in a quiet cul de sac and located a short walk away from several schools and shopping parades an early viewing is recommended to avoid missing out on this home. The accommodation comprises to the ground floor of an entrance hall, lounge/diner, kitchen and utility area. To the first floor are three good sized bedrooms and a three piece bathroom. Outside to the front is a laid lawn enclosed by a hedge surround, while the rear garden has a large patio leading to a laid lawn, all enclosed by hedge surround. Call now to book a viewing.

- NO CHAIN
- COMBI BOILER
- READY TO MOVE INTO
- CLOSE TO LOCAL PARKS
- GOOD TRANSPORT LINKS
- REFITTED KITCHEN
- LARGE LOUNGE/DINER
- THREE GOOD SIZE BEDROOMS
- WALKING DISTANCES TO SCHOOLS

Entrance Hall

Entered via a double glazed door, radiator, stairs rising to first floor landing, doors to:

Lounge/Diner

21' x 11'3 (6.40m x 3.43m)

Double glazed window to front and rear elevation, tv point, telephone point, radiators.

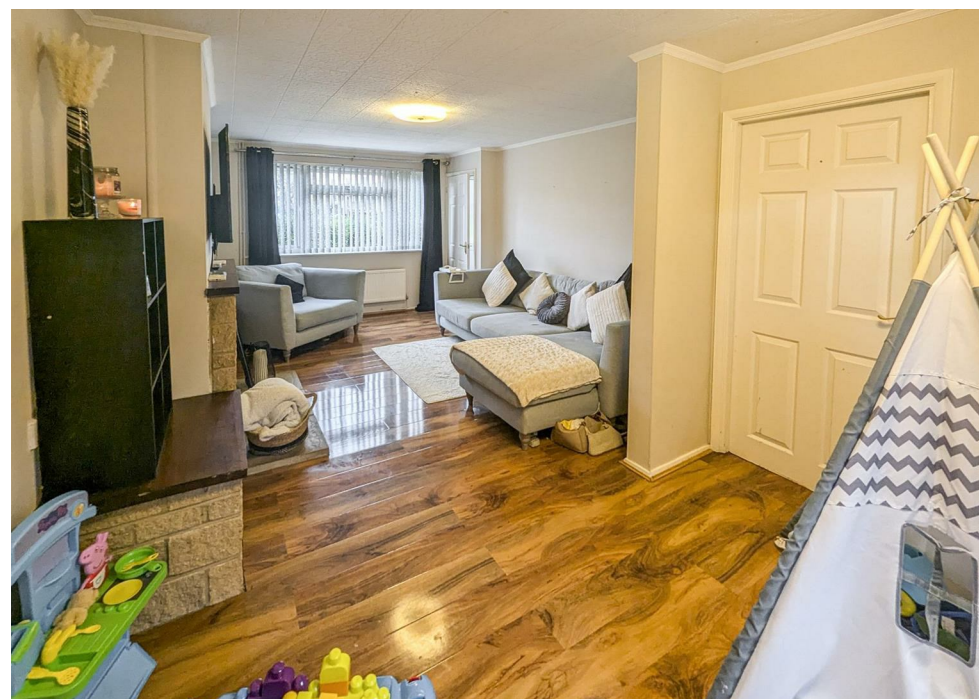
Kitchen

11'2 x 8 (3.40m x 2.44m)

Fitted to comprise a range of base and eye level units with single sink and drainer, space for range cooker, space for automatic washing machine, double glazed window to rear elevation, double glazed door to side elevation.

Utility Area

Double glazed window to the side, radiator.







Landing

Loft access, doors to:

Bedroom One

13'6 x 10'2 (4.11m x 3.10m)

Double glazed window to front elevation, radiator.

Bedroom Two

12'4 x 9'8 (3.76m x 2.95m)

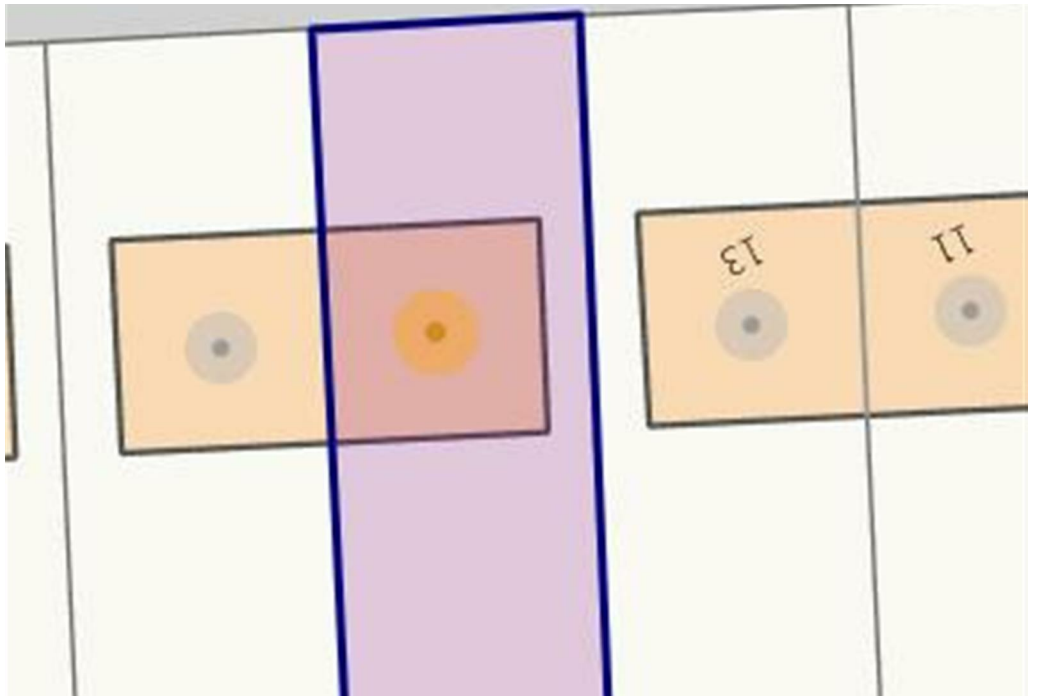
Double glazed window to rear elevation, radiator.

Bedroom Three

10' x 7'4 (3.05m x 2.24m)

Double glazed window to front elevation, radiator.





Bathroom

Fitted to comprise a three piece suite with bath with mains feed shower over and a low level wash hand basin, radiator, and double glazed window to rear elevation.

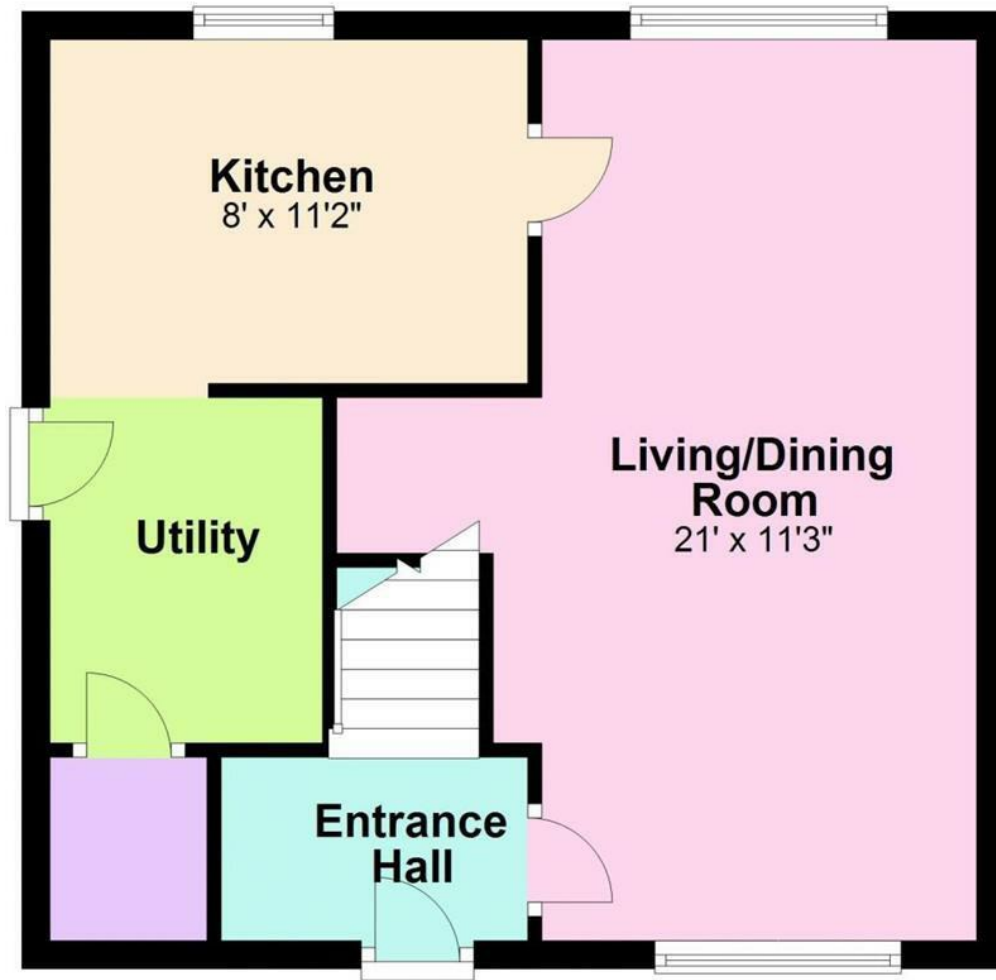
Outside

To the front is a laid lawn enclosed by a hedge surround.

The rear garden has a large patio leading to a laid lawn, all enclosed by hedge surround.

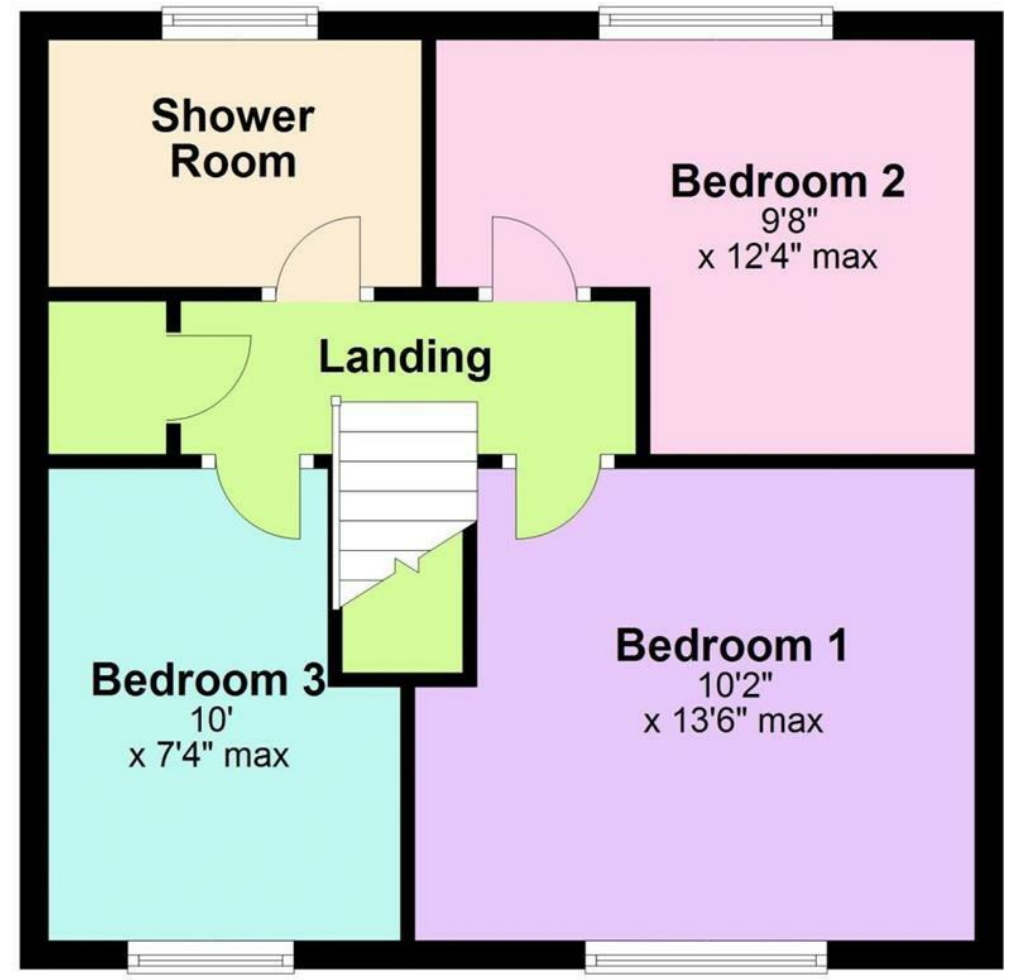
Ground Floor

Approx. 453.6 sq. feet



First Floor

Approx. 453.6 sq. feet



Total area: approx. 907.3 sq. feet

