



27 Orkney Walk, Corby, NN17 2QT



£115,000

*** SOLD BEFORE MARKETING *** Stuart Charles are delighted to offer FOR SALE this TWO DOUBLE bedroom first floor flat located in the popular Lodge park area of Corby. Although in need of modernisation this home would be ideal for a first time buyer, the home is also situated a short walk to several schools and shops. The accommodation comprises of an entrance hall, lounge/diner two bedrooms, three piece bathroom and kitchen. Outside there is a shared green space and a large communal carpark.

- NO CHAIN
- TWO DOUBLE BEDROOMS
- COMMUNAL CAR PARK TO THE FRONT
- WALKING DISTANCE TO SCHOOLS
- SOLD BEFORE MARKETING
- GOOD SIZED LOUNGE/DINER
- THREE PIECE BATHROOM
- WALKING DISTANCE TO SHOPS
- FIRST FLOOR APARTMENT

Entrance Hall

Entered via a double glazed door, radiator, space for automatic washing machine, storage cupboard, doors to:

Kitchen

11'8 x 6'10 (3.56m x 2.08m)

Fitted to comprise a range of base and eye level units with a single sink and drainer, space for free standing cooker, space for free standing fridge/freezer, radiator, double glazed window to front elevation.

Lounge

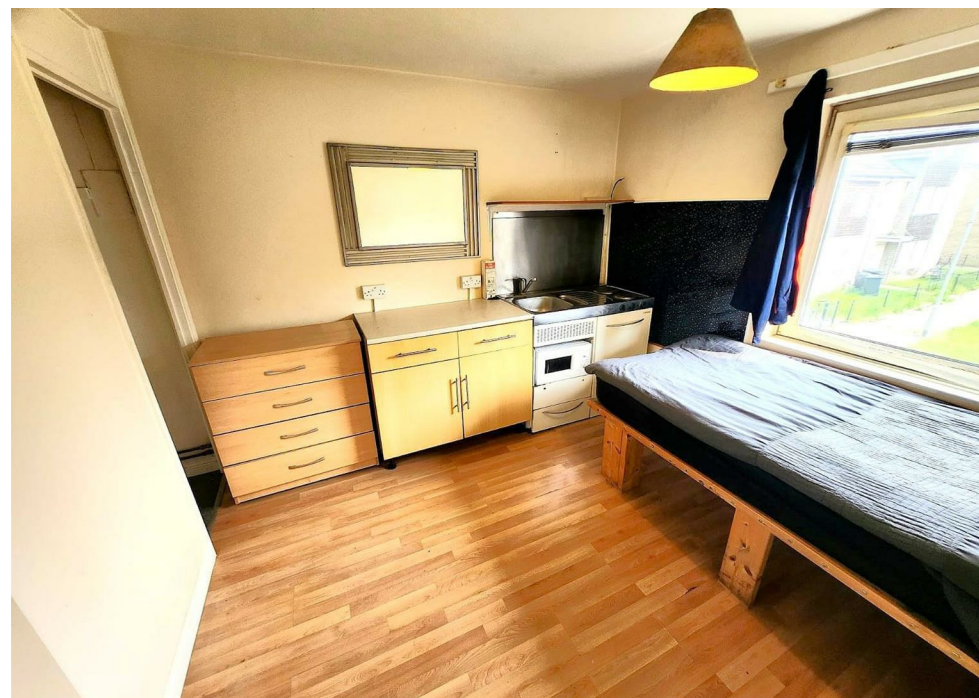
15'0 x 11'0 (4.57m x 3.35m)

Double glazed window to side elevation, radiator, Tv point, Telephone point.

Bedroom One

12'5 x 11'6 (3.78m x 3.51m)

Double glazed window to rear elevation, radiator, built in wardrobe.





Bedroom Two

12'0 x12'0 (3.66m x3.66m)

Double glazed window to rear elevation, radiator, built in wardrobe.

Bathroom

Fitted to comprise a three piece suite consisting of a panel bath, low level pedestal, low level wash hand basin, radiator.

Outside

A large communal offers off road parking subject to availability



This floorplan is for illustrative purposes only and is not drawn to scale. Measurements, floor-areas, openings and orientations are approximate. They should not be relied upon for any purpose and do not form any part of an agreement. No liability is taken for any error or mis-statement. All parties must rely on their own inspections.

