



17 Hillside Crescent, Weldon, Corby, NN17 3HF

£295,000

Stuart Charles are delighted to offer for sale this THREE/TWO bedroom modern semi detached bungalow located in the desirable village of Weldon. Located in a quiet street and within walking distance to several local amenities an early viewing is recommended to avoid missing out on this home. The accommodation comprises of an entrance hall, lounge/bedroom one, modern kitchen, refitted shower room and two good sized bedrooms. Outside to the front is a large driveway for multiple cars and a garage. To the rear is a patio area that leads to a large laid lawn with timber fence surround. Call now to view!!

- NO CHAIN
- REFITTED KITCHEN
- DRIVEWAY AND GARAGE
- WELL PRESENTED THROUGHOUT
- THREE GOOD SIZE BEDROOM
- FULL RENOVATION
- MODERN SHOWER ROOM
- REAR GARDEN WITH ACCESS TO A BROOK
- VILLAGE LOCATION

Entrance Hall

Entered via a double glazed door, storage cupboard, doors to:

Lounge/Bedroom One

12'6 x 10'4 (3.81m x 3.15m)

Double glazed window to the front elevation

Kitchen/Diner

14'9 x 10'4 (4.50m x 3.15m)

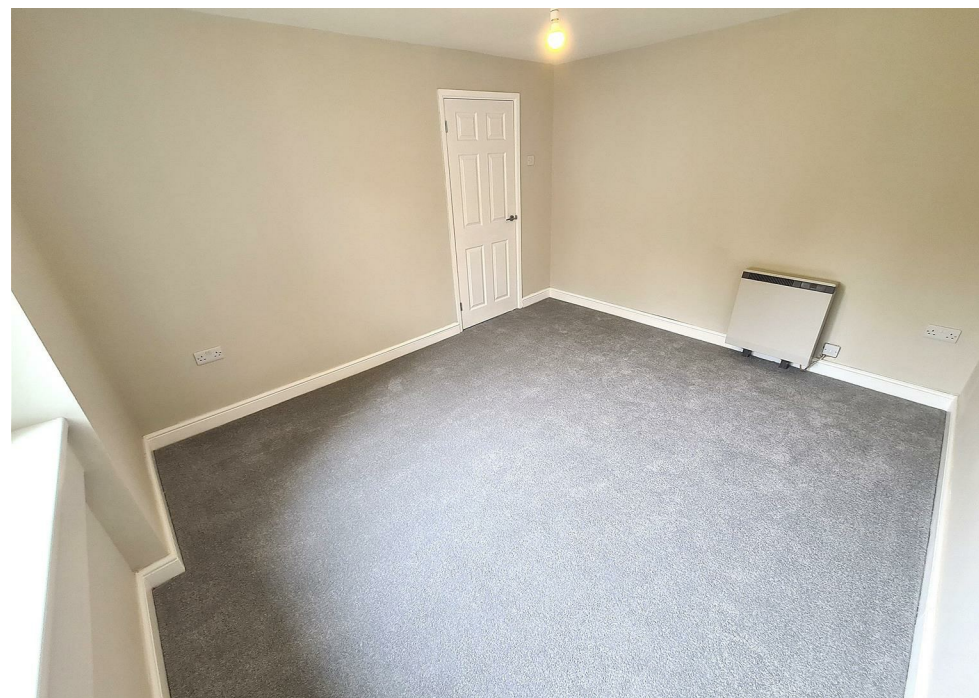
Fitted to comprise a range of base and

eye level units with a one and a half bowl steel sink and drainer, integrated electric oven and hob, integrated microwave, space for automatic washing machine, double glazed window to rear, double glazed door to rear elevation.

Bedroom Two

10'2 x 7'10 (3.10m x 2.39m)

Double glazed window to the front elevation, electric radiator.







Bedroom Three

10'2 x 7'7 (3.10m x 2.31m)

Double glazed window to the rear elevation, electric radiator.

Shower room

8'7 x 7'1 (2.62m x 2.16m)

Fitted to comprise a three piece suite consisting of a walk in mains feed shower cubicle, a low level pedestal, a low level wash hand basin, radiator, extractor fan, double glazed window to side elevation and aqua panels.

Outside

To the front is a large driveway for multiple cars and a garage.





To the rear is a patio area that leads to a large laid lawn with timber fence surround.







Floor Plan

Illustration for identification purposes only, measurements are approximate, not to scale.
Produced by Elements Property

