



41 Lapland Walk, Corby, NN18 9DD



**£205,000**

Stuart Charles are delighted to offer for sale with this three bedroom mid terrace home located in the kingswood area of Corby. Having being recently renovated by the current owners this house is ready to move into!! The accommodation on offer comprises an entrance hall with guest WC, lounge, a good sized kitchen/diner, and utility room. To the first floor are three well proportioned rooms, a large storage cupboard and a bathroom. To the rear is a patio area that leads to a laid lawn with timber fence surround. Call now to book a viewing!!

- NEW CONSUMER UNIT
- READY TO MOVE INTO
- THREE GOOD SIZE BEDROOMS
- MODERN COMBI BOILER
- NEW KITCHEN AND BATHROOM
- WELL PRESENTED THROUGHOUT
- AMENITIES WITHIN WALKING DISTANCE

#### **Entrance Hall**

Stairs rising to first floor landing, guest WC, radiator, doors to:

#### **Guest WC**

This two piece suite features a a low level wash hand basin, pedestal and double glazed window to the side elevation.

#### **Lounge**

15'11 x 12'06 (4.85m x 3.81m)

Double glazed window to the rear and front elevation, radiators, Tv and Telephone points.

#### **Kitchen/Diner**

17' x 8'07 (5.18m x 2.62m)

Fitted to comprise a range of base and eye level units with a one bowl sink and drainer, space for a dishwasher, space for free standing cooker, space for free













standing fridge, radiator, double glazed window to the rear elevation, double glazed French doors to rear, doors to:

### Utility Room

9'08 x 6'05 (2.95m x 1.96m)

### Landing

Airing cupboard, storage cupboard, loft access, doors to:

### Bedroom One

15'8 x 10'3 (4.78m x 3.12m)

Double glazed window to the rear elevation, radiator.









### Bedroom Two

10'9 x 10'5 (3.28m x 3.18m)

Double glazed window to the front elevation.

### Bedroom Three

10'09 x 6'05 (3.28m x 1.96m)

Double glazed window to the front elevation, radiator.

### Shower room

10'9 x 4'07 (3.28m x 1.40m)

Featuring a three piece suite with a panel bath with shower over, low level wash hand basin and pedestal, radiator, double glazed window to rear elevation.

### Outside

To the rear is a patio area that leads to a laid lawn with timber fence surround.









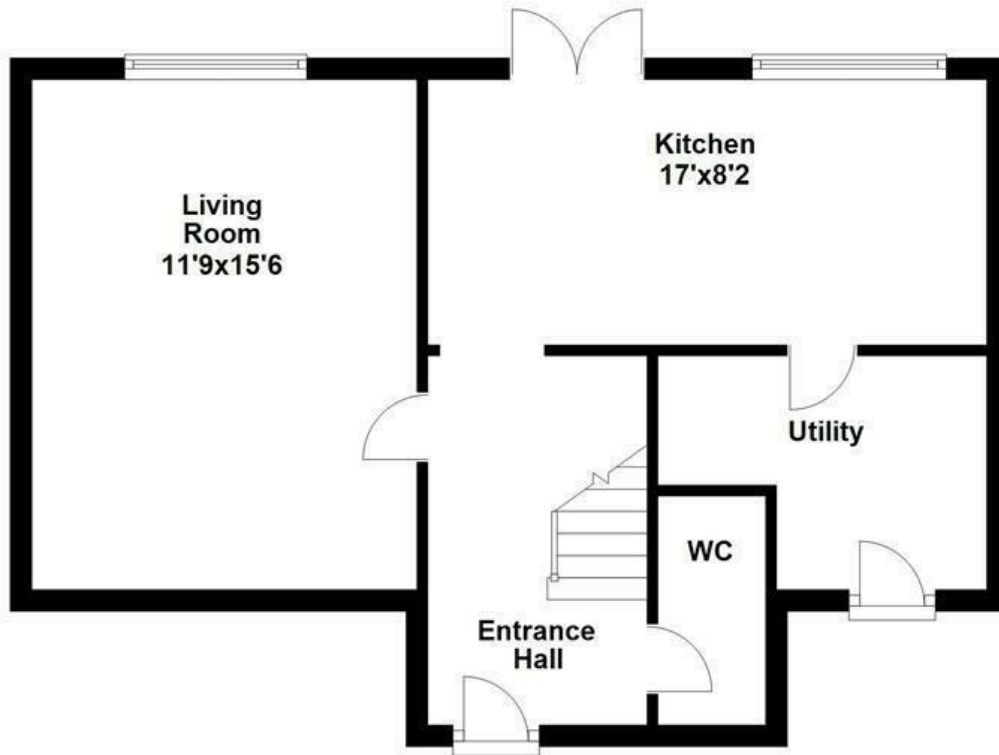




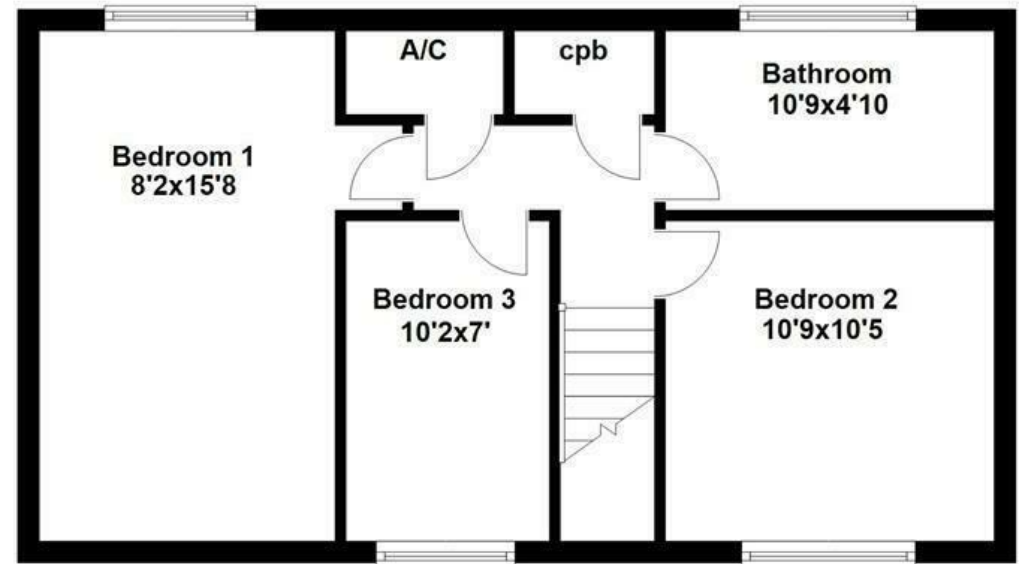




## Ground Floor



## First Floor



Floor plan not to scale - for guidance purposes only.  
Plan produced using PlanUp.



