



**STUART
CHARLES**
ESTATE AGENTS



compass court, West Avenue

Burton Latimer, Kettering, NN15 5FE

£750 Per month



compass court, West Avenue

Burton Latimer, Kettering, NN15 5FE

£750 Per month



Entrance Hall

Entered via a double glazed door,

Lounge/Kitchenette

Fitted to comprise a range of base and eye level units with a single sink and drainer, gas hob with extractor, electric oven, space for automatic washing machine, integrated fridge/freezer, two double glazed windows, radiator, tv point, telephone point.

Hallway

Doors to:

Bedroom One

Double glazed window, radiator.

Bedroom Two

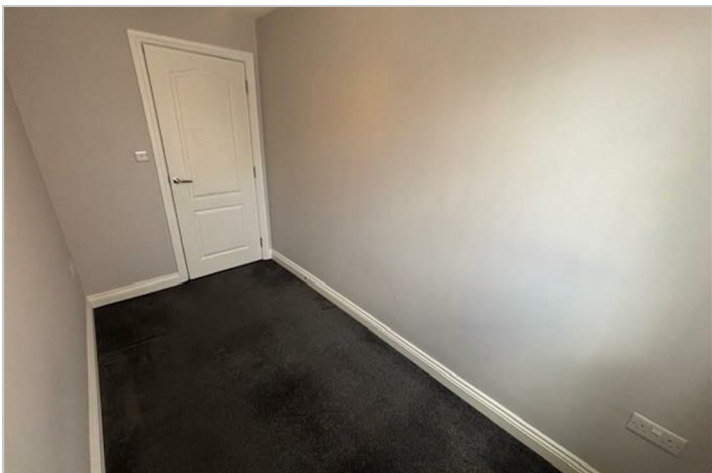
Double glazed window, radiator.

Bathroom

Fitted to comprise a three piece suite consisting of a panel bath with mains feed shower over, low level wash hand basin, low level pedestal, radiator, double glazed window.

Outside

An allocated parking space is provided for one vehicle.



Road Map



Hybrid Map



Terrain Map



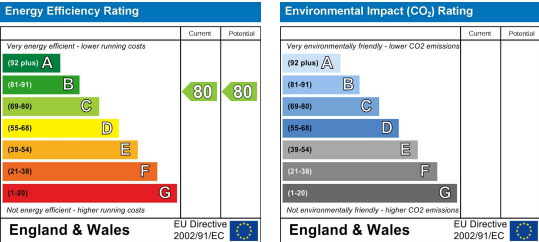
Floor Plan



Viewing

Please contact our Stuart Charles Estate Agents Office on 01536 234264 if you wish to arrange a viewing appointment for this property or require further information.

Energy Efficiency Graph



These particulars, whilst believed to be accurate are set out as a general outline only for guidance and do not constitute any part of an offer or contract. Intending purchasers should not rely on them as statements of representation of fact, but must satisfy themselves by inspection or otherwise as to their accuracy. No person in this firms employment has the authority to make or give any representation or warranty in respect of the property.