



7 Soar Green, Corby, NN17 2JB



**£180,000**

Stuart Charles are delighted to offer for sale with NO CHAIN this three bedroom home located in the Shire area of Corby. Situated a short walk away from a range of amenities to include schools, shops and open play area's. The accommodation comprises to the ground floor of an entrance hall, lounge/diner, kitchen and a utility room. To the first floor are three good sized bedrooms, a shower room. To the front is a a low maintenance lawn, with a concrete path to the front door. To the rear a patio area leads onto a laid lawn, and the whole garden is enclosed by timber fencing to all sides with rear gated access. Call now to view!!

- NO CHAIN
- LARGE LOUNGE/DINER
- THREE GOOD SIZED BEDROOMS
- LOCATED NEXT TO A LARGE CAR PARK WITH POTENTIAL TO RENT A GARAGE
- CLOSE TO MULTIPLE SHOPPING AREAS
- MODERN COMBI BOILER
- MODERN KITCHEN
- WELL PRESENT THROUGHOUT
- WALKING DISTANCE TO SCHOOLS

### Entrance Hall

Stairs rising to first floor landing, door to:

### Lounge/Diner

20'69 x 11'03 (6.10m x 3.43m)  
Double glazed window to front and rear elevation, Tv point, two radiators.

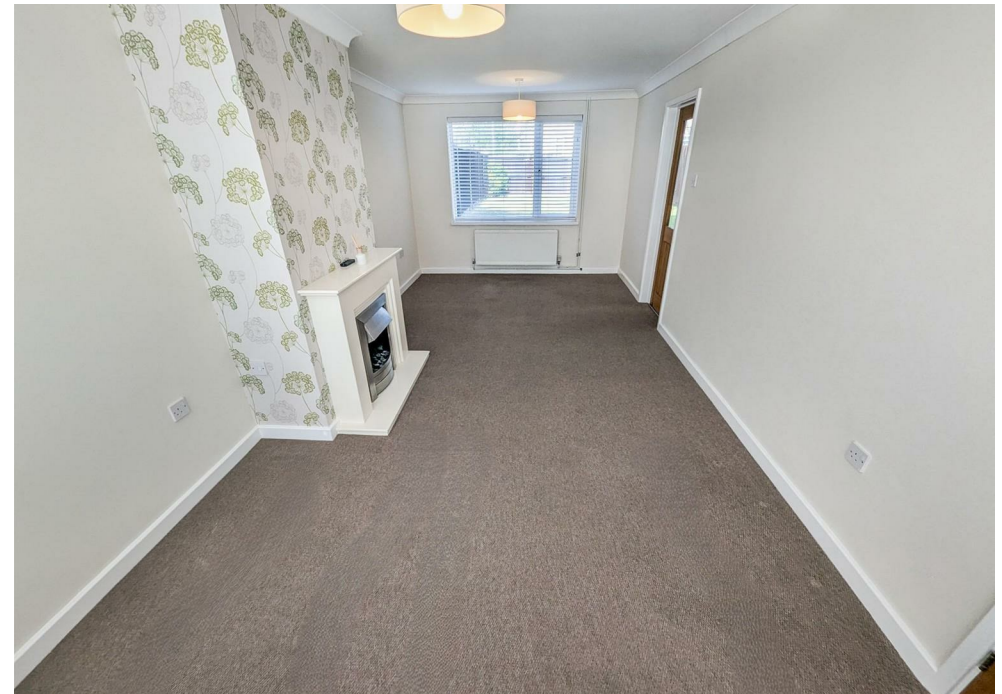
### Kitchen/Breakfast Room

10'46 x 10'33 (3.05m x 3.05m)  
Fitted to comprise a range of base and

eye level units with a single sink and drainer, free standing cooker, double glazed window and door to rear elevation, radiator, door to:

### Utility Room

10'37 x 7'01 (3.05m x 2.16m)  
Space for free standing fridge/freezer, space for tumble dryer, space for washing machine, under stairs storage area.







## First Floor Landing

Loft access, storage cupboard, doors to:

### Bedroom One

11'09 x 10'04 (3.58m x 3.15m)

Double glazed window to front elevation, built in wardrobe, radiator.

### Bedroom Two

9'88 x 8'14 (2.74m x 2.44m)

Double glazed window to rear elevation, storage cupboard with combi boiler, radiator.





### Bedroom Three

11'19 x 7'2 (3.35m x 2.18m)

Double glazed window to front elevation, built in wardrobe, radiator.

### Shower Room

5'95 x 4'86 (1.52m x 1.22m)

Fitted to comprise a three piece suite consisting of a mains feed shower, low level pedestal, low level wash hand basin and radiator.

### Outside

Front: A low maintenance lawn is leading to a path to the front door.

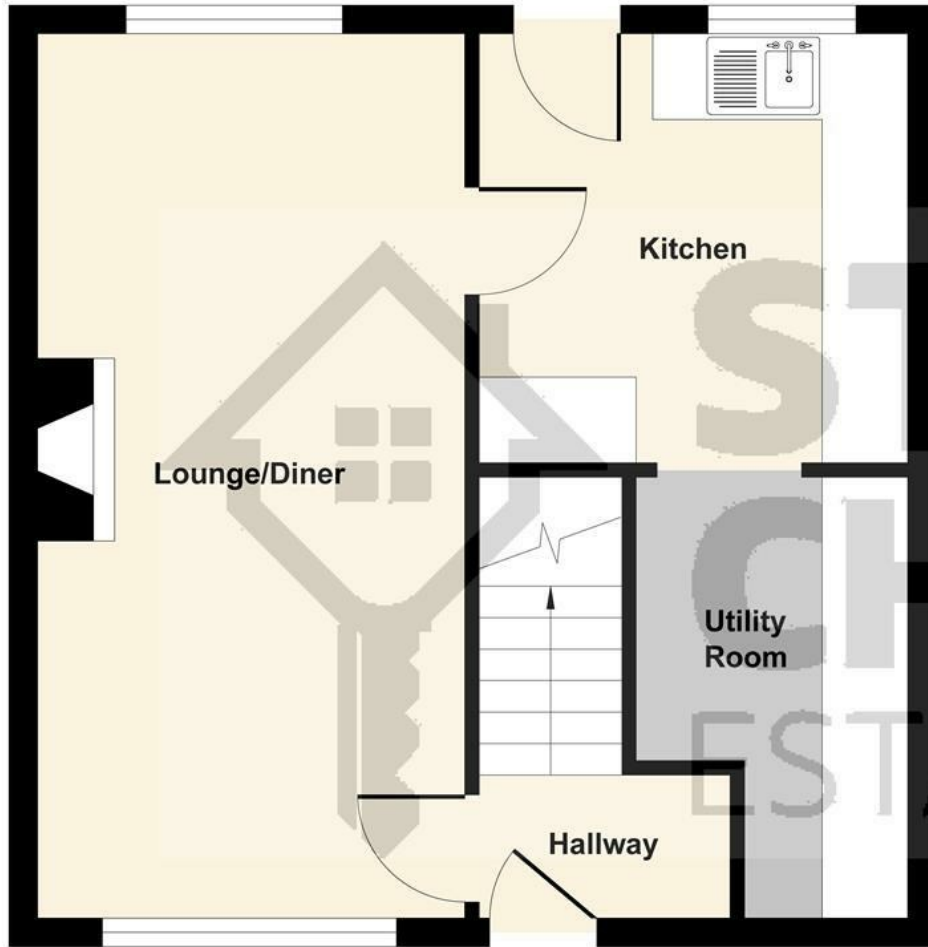
Rear: A large patio area leads onto a laid lawn, the



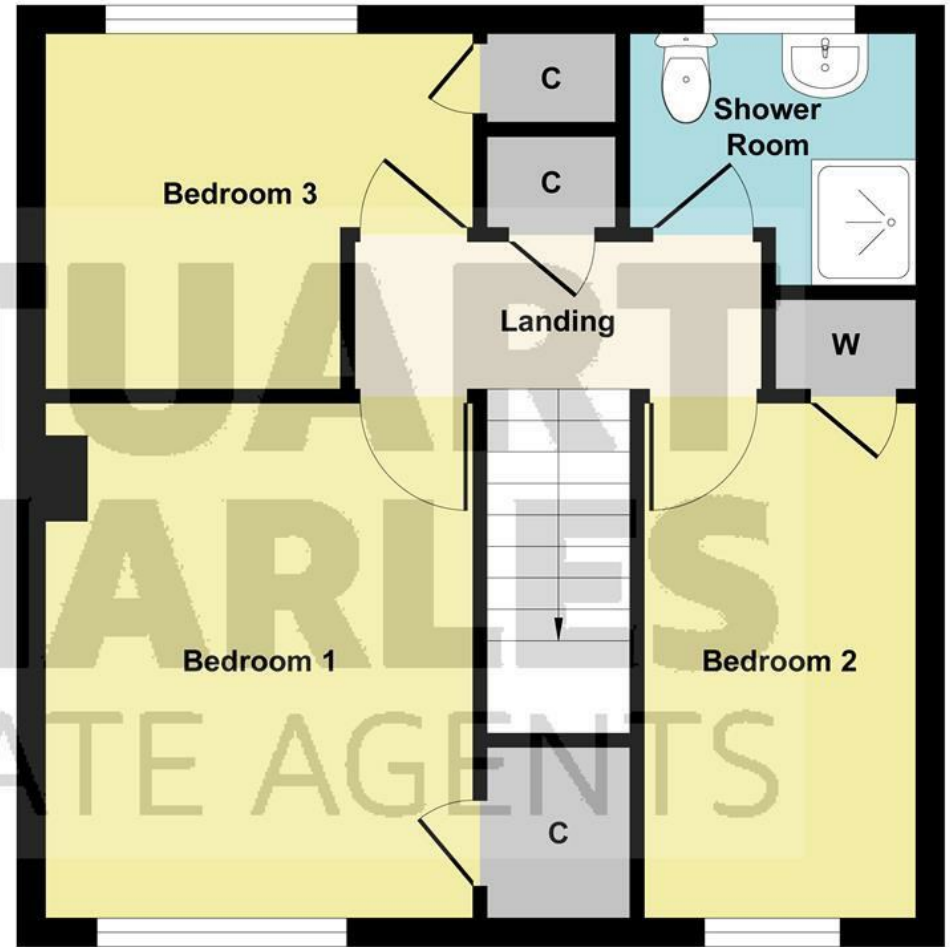


whole garden is enclosed by timber fencing to all sides.





Ground Floor



First Floor

Illustration for identification purposes only, measurements are approximate, not to scale.  
Produced by Elements Property

