



7 Soar Green, Corby, NN17 2JB



**STUART  
CHARLES**  
ESTATE AGENTS



**£189,950**

Stuart Charles are delighted to offer for sale with NO CHAIN this three bedroom home located in the Shire area of Corby. Situated a short walk away from a range of amenities to include schools, shops and open play area's. The accommodation comprises to the ground floor of an entrance hall, lounge/diner, kitchen and a utility room. To the first floor are three good sized bedrooms, a shower room. To the front is a a low maintenance lawn, with a concrete path to the front door. To the rear a patio area leads onto a laid lawn, and the whole garden is enclosed by timber fencing to all sides with rear gated access. Call now to view!!

- NO CHAIN
- LARGE LOUNGE/DINER
- THREE GOOD SIZED BEDROOMS
- LOCATED NEXT TO A LARGE CAR PARK WITH POTENTIAL TO RENT A GARAGE
- CLOSE TO MULTIPLE SHOPPING AREAS
- MODERN COMBI BOILER
- MODERN KITCHEN
- WELL PRESENT THROUGHOUT
- WALKING DISTANCE TO SCHOOLS

### Entrance Hall

Stairs rising to first floor landing, door to:

### Lounge/Diner

20'69 x 11'03 (6.10m x 3.43m)

Double glazed window to front and rear elevation, Tv point, two radiators.

### Kitchen/Breakfast Room

10'46 x 10'33 (3.05m x 3.05m)

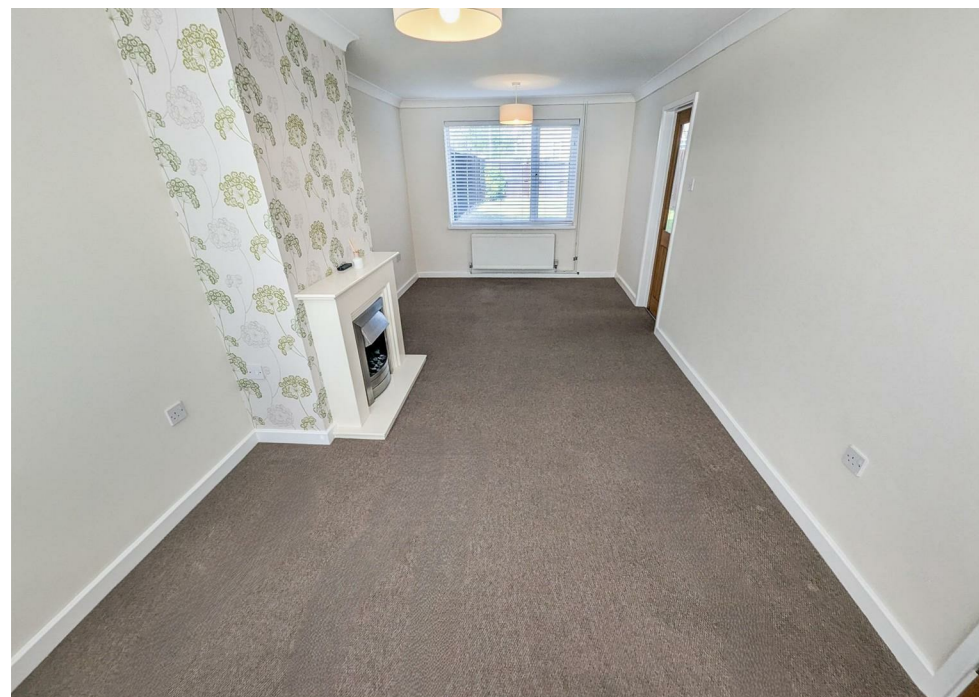
Fitted to comprise a range of base and

eye level units with a single sink and drainer, free standing cooker, double glazed window and door to rear elevation, radiator, door to:

### Utility Room

10'37 x 7'01 (3.05m x 2.16m)

Space for free standing fridge/freezer, space for tumble dryer, space for washing machine, under stairs storage area.













### First Floor Landing

Loft access, storage cupboard, doors to:

### Bedroom One

11'09 x 10'04 (3.58m x 3.15m)

Double glazed window to front elevation, built in wardrobe, radiator.

### Bedroom Two

9'88 x 8'14 (2.74m x 2.44m)

Double glazed window to rear elevation, storage cupboard with combi boiler, radiator.









### Bedroom Three

11'19 x 7'2 (3.35m x 2.18m)

Double glazed window to front elevation, built in wardrobe, radiator.

### Shower Room

5'95 x 4'86 (1.52m x 1.22m)

Fitted to comprise a three piece suite consisting of a mains feed shower, low level pedestal, low level wash hand basin and radiator.

### Outside

Front: A low maintenance lawn is leading to a path to the front door.

Rear: A large patio area leads onto a laid lawn, the







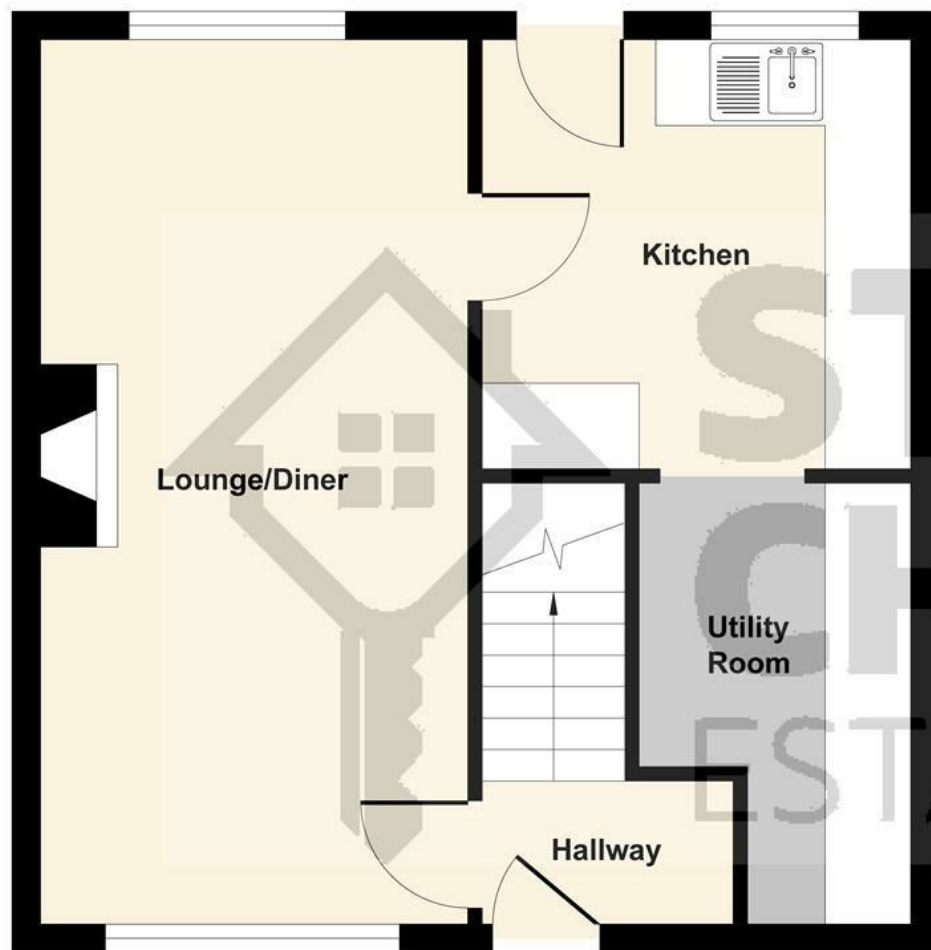


whole garden is enclosed by timber fencing to all sides.

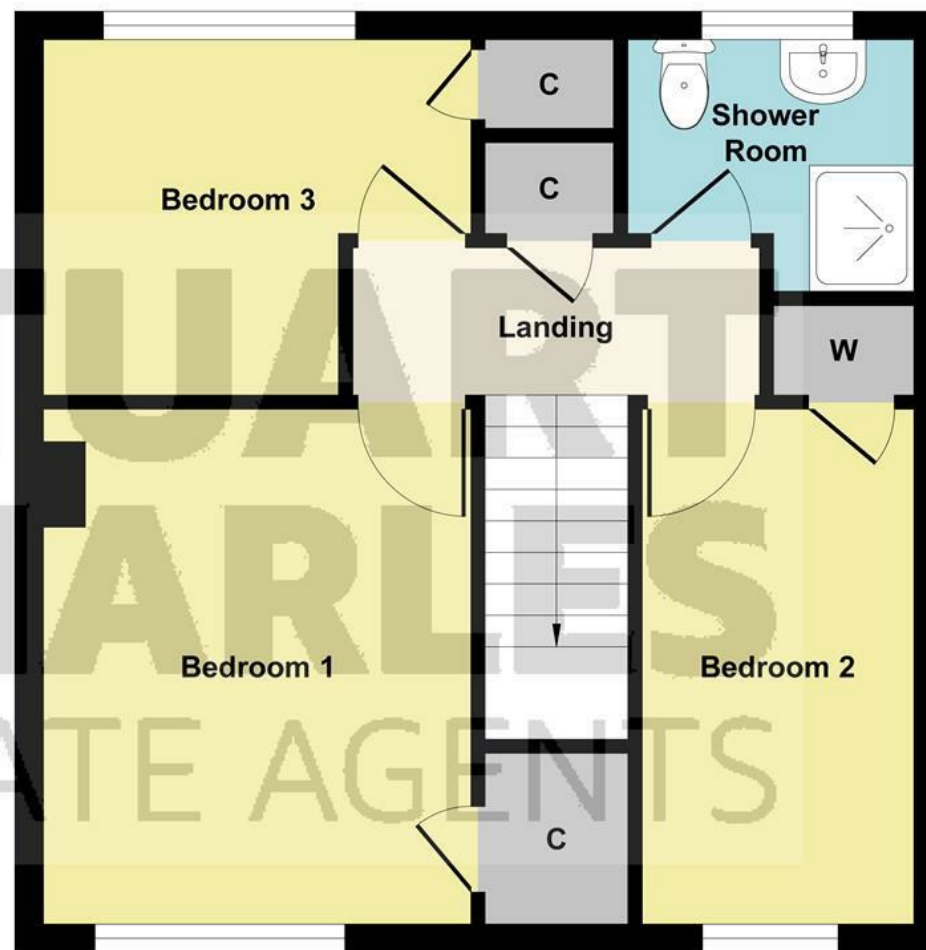








**Ground Floor**



**First Floor**

Illustration for identification purposes only, measurements are approximate, not to scale.  
Produced by Elements Property



