



384 Willow Brook Road, Corby, NN17 2TS



**£205,000**

Stuart Charles are delighted to offer FOR SALE this three bedroom semi detached home located in the desirable Lodge Park area of Corby. Situated a short walk away from several shops and schools an early viewing is recommended to avoid missing out this home. The accommodation comprises to the ground floor of an entrance hall, lounge, galley kitchen, dining room, guest W.C, ground floor shower room and a utility room. To the first floor are three good sized bedrooms and a family bathroom. Outside to the front is a laid lawn which is enclosed by timber fence and privet hedge, to the rear a patio area leads onto a laid lawn and is enclosed by timber fencing to all sides. Call now to view!!

- NO CHAIN
- GALLEY KITCHEN
- GUEST W.C
- UTILITY ROOM
- THREE PIECE FAMILY BATHROOM
- GOOD SIZED LOUNGE
- SEPERATE DINING ROOM
- DOWNSTAIRS SHOWER ROOM
- THREE GOOD BEDROOMS
- WALKING DISTANCE TO SCHOOLS AND SHOPS

### Entrance Hall

Entered via a double glazed door, stairs rising to first floor landing, radiator, doors to:

### Lounge

13'8 x 10'6 (4.17m x 3.20m)

Double glazed window to rear elevation, radiator, television point.

### Kitchen

10'0 x 9'0 (3.05m x 2.74m)

Fitted to comprise a range of base and eye level units with a single sink and drainer, double glazed window to front elevation, space for free standing cooker, space for low level fridge, doors to:

### Dining Room

12'0 x 10'0 (3.66m x 3.05m )

Double glazed window to rear elevation, radiator, telephone point.







### Rear Hall

Double glazed door to front, tiled flooring, coving to ceiling.

### Guest W.C

Fitted to comprise a low level WC, window to front elevation.

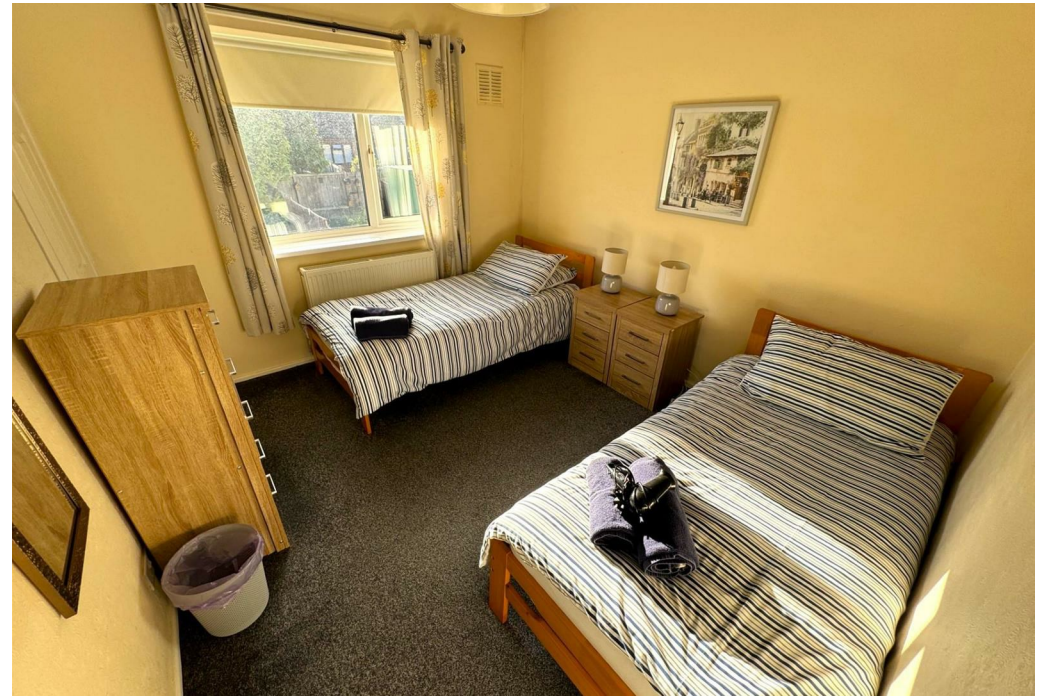
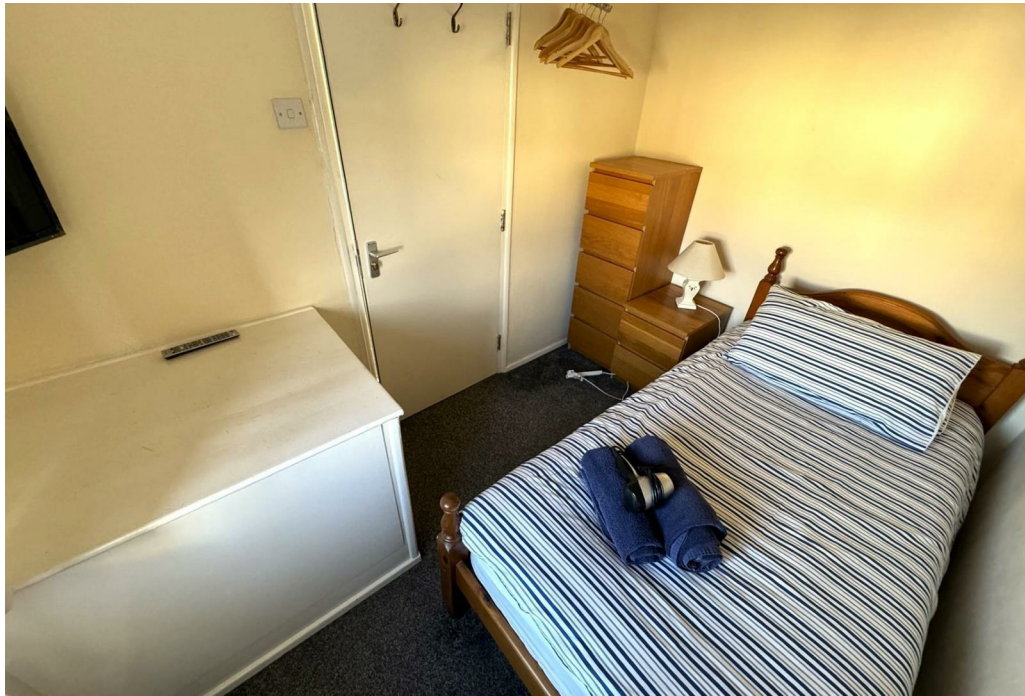
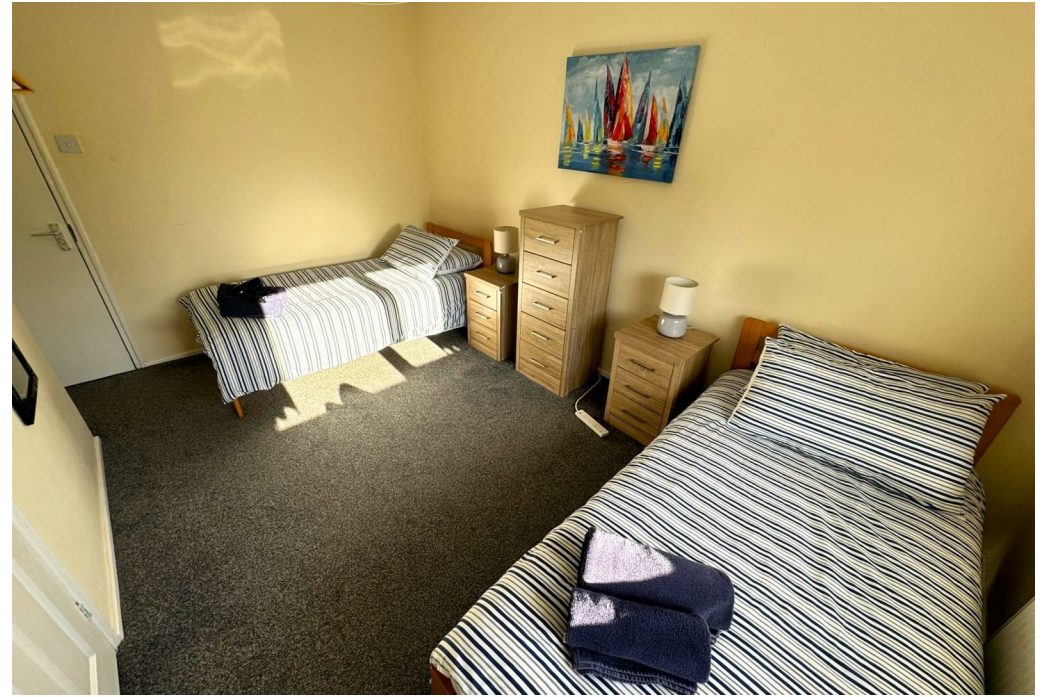
### Shower Room

Fitted to comprise a electric feed double shower cubicle.

### Utility Room

Double glazed window and door to rear elevation, space for automatic washing machine, space for condensing dryer, space for fridge/freezer.





## First Floor Landing

Loft access, double glazed window to front elevation, doors to:

### Bedroom One

14'0 x 9'0 (4.27m x 2.74m)

### Bedroom Two

11'2 x 10' (3.40m x 3.05m)

Double glazed window to rear elevation, radiator, airing cupboard.

### Bedroom Three

9'10 x 6'10 (3.00m x 2.08m)

Double glazed window to front elevation, radiator.







## **Bathroom**

Fitted to comprise a three piece suite consisting of a panel bath with shower over, pedestal wash hand basin, low level WC, radiator, double glazed window to side elevation, radiator.

## **Outside**

Front: A laid lawn is enclosed by privet hedges and timber fencing

Rear: A patio area leads onto a laid lawn an is enclosed by timber fencing to all sides.



### Ground Floor



### First Floor

