



2 Welbeck Court, Corby, NN18 0HP



**STUART  
CHARLES**  
ESTATE AGENTS



## Offers in excess of £170,000

Stuart Charles are delighted to offer for sale with NO CHAIN this three bedroom home located on the Beanfield area of Corby. Situated a short walk away from primary schools and local shops an early viewing is recommended to avoid missing out on this home To the ground floor is an entrance porch, large lounge, kitchen/breakfast room and utility room. To the first floor there are three good size bedrooms, and a family bathroom. Outside to the front is a dwarf wall surround while to rear is a low maintenance garden with a patio area and rear gated access to the communal parking area. Call now to book a viewing!!

- NO CHAIN
- LARGE LOUNGE
- CUL-DE-SAC LOCATION
- WALKING DISTANCE TO LOCAL PARKS
- LOW MAINTENANCE GARDEN
- UTILITY ROOM
- POTENTIAL TO ADD VALUE
- LOW COUNCIL TAX BAND A

### Entrance Hall

Entered via a double glazed door, double glazed window to side elevation, stairs rising to first floor landing, doors to:

### Lounge

20'7 x 10'11 (6.27m x 3.33m)

Double glazed window to front and rear elevation, tv point, telephone point, door to:

### Kitchen

16'8 x 10'3 (5.08m x 3.12m)

Fitted to comprise a range of base and eye level units with a single steel sink and drainer, integrated cooker with gas hob, integrated fridge and freezer, space for automatic washing machine, under stairs storage cupboard, radiators, double glazed window and door to rear elevation.

### Utility Room













## Landing

Loft access, doors to:

### Bedroom One

11'1" x 10'2" (3.38m x 3.12m)

Double glazed window to front elevation, radiator, built in wardrobe.

### Bedroom Two

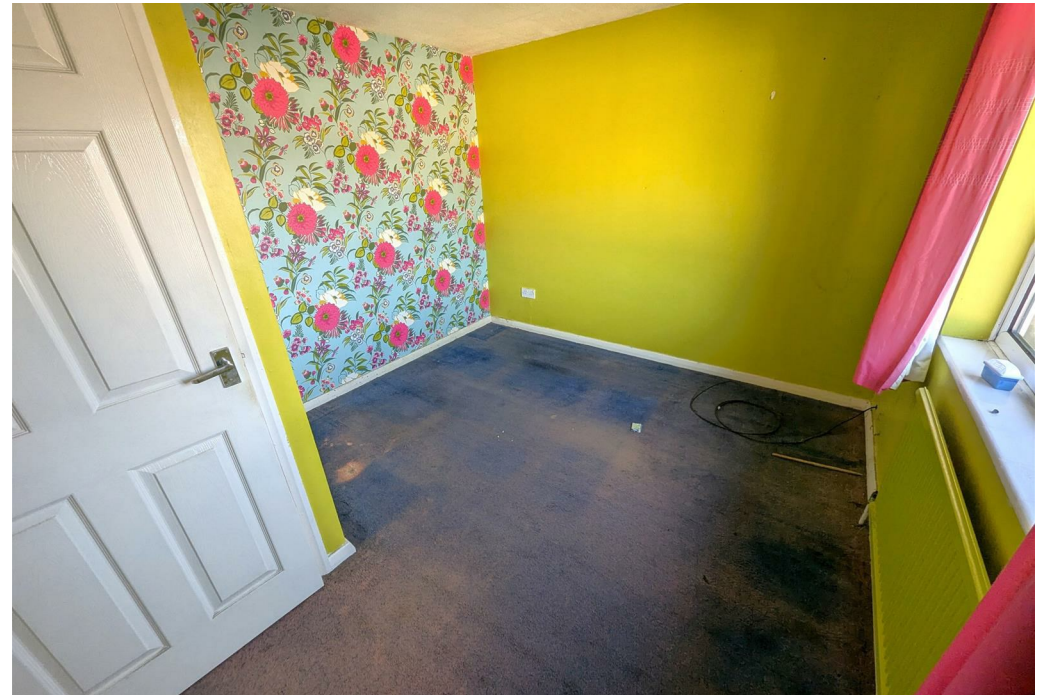
10'11" x 10'0" (3.35m x 3.07m)

Double glazed window to rear elevation, radiator, built in wardrobe.

### Bedroom Three

11'1" x 6'11" (3.38m x 2.13m)

Double glazed window to front elevation, radiator.









## Bathroom

Fitted to comprise a three piece suite consisting of a panel bath with shower over, low level wash hand basin, low level pedestal, radiator and double glazed window to rear elevation.

## Outside





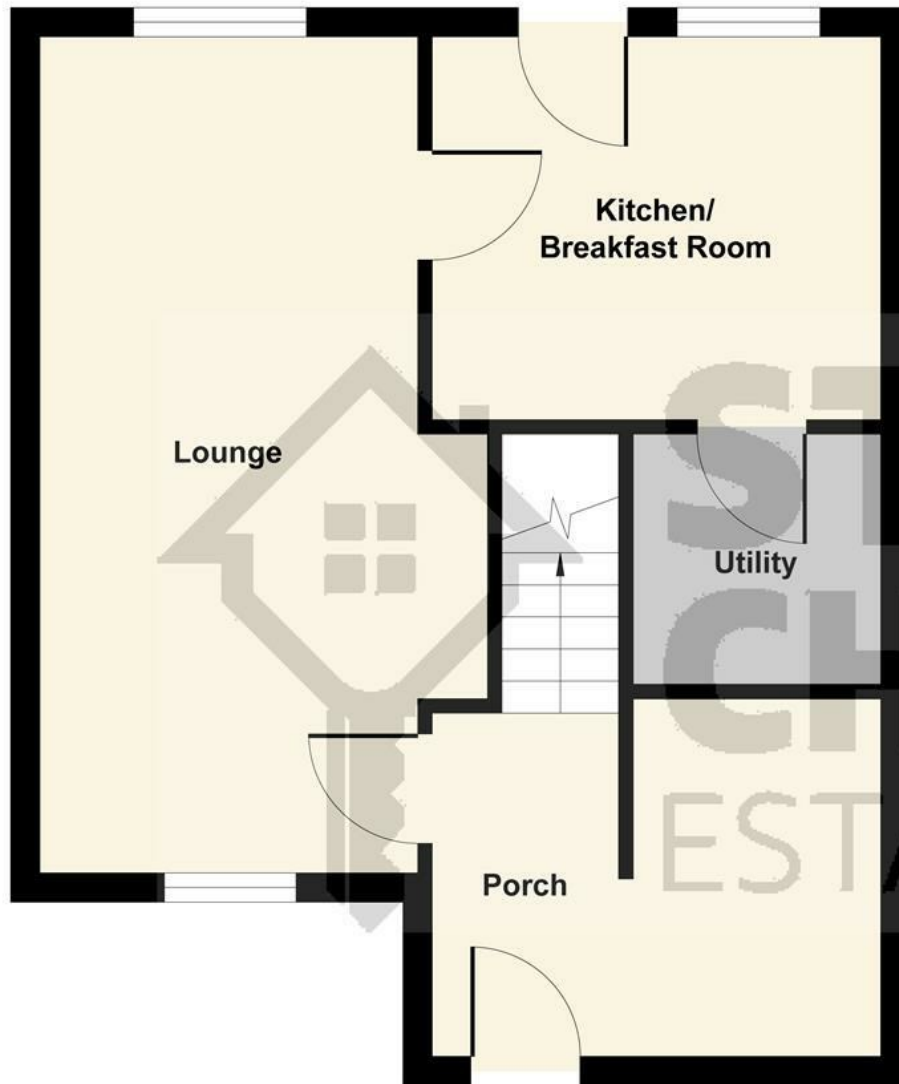




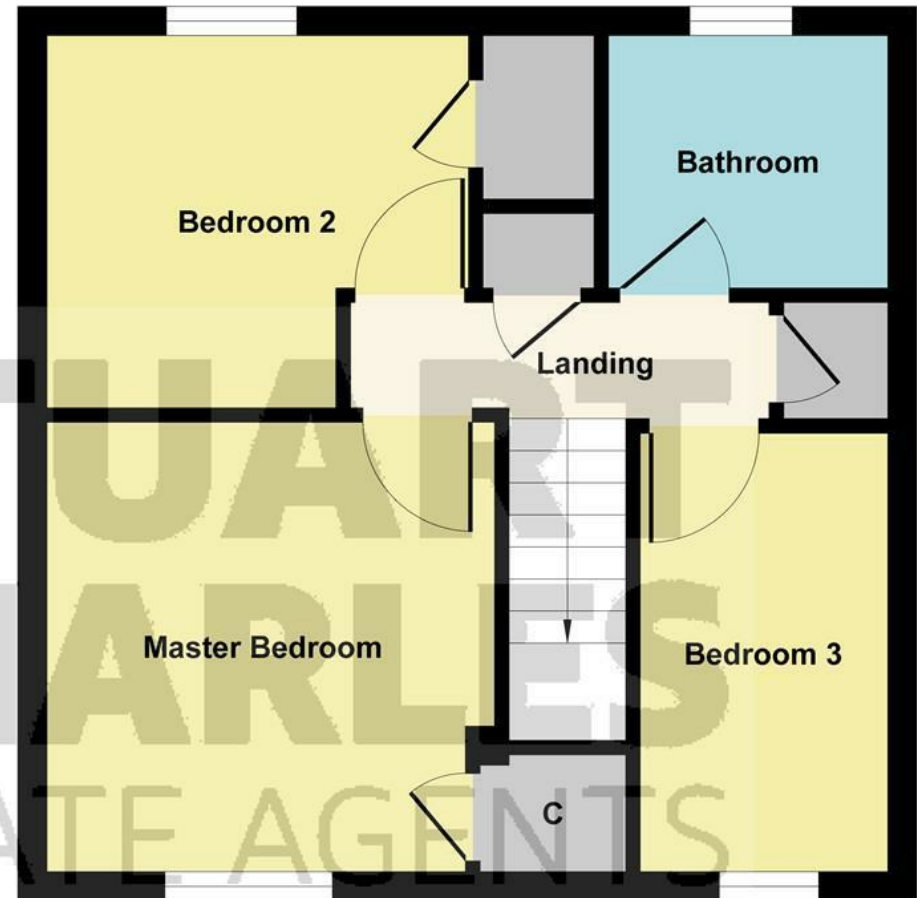








**Ground Floor**



**First Floor**

Illustration for identification purposes only, measurements are approximate, not to scale.  
Produced by Elements Property



