



4 Canford Green, Corby, NN18 0DQ



**STUART  
CHARLES**  
ESTATE AGENTS



# £149,995

Stuart Charles are delighted to offer FOR SALE with NO CHAIN this TWO DOUBLE bedroom first floor apartment located in the desirable Beanfield area of Corby. Situated a short walk away from several schools and located on a main bus route an early viewing is recommended to avoid missing out on this home. The accommodation comprises of a large entrance area/utility area, entrance hall, galley style kitchen, lounge/diner, two double bedrooms and a three piece bathroom suite. Outside to the front is a large wrap around shared lawn, to the rear is a small courtyard area and two storage sheds. Call now to view!!.

- NO CHAIN
- TWO DOUBLE BEDROOMS
- GALLEY KITCHEN
- WALKING DISTANCE TO SHOPS
- WALKING DISTANCE TO SCHOOLS
- LARGE LOUNGE/DINER
- THREE PIECE FAMILY BATHROOM
- UTILITY AREA
- LOCATED ON MAIN BUS LINK
- 89 YEAR LEASE LEFT

## Entrance Hall/Utility Area

Entered via a solid Oak door, space for free standing fridge/freezer, space for automatic washing machine, space for tumble dryer, glazed window to front and rear elevations, door to:

## Hallway

13'4 x 11'10 (4.06m x 3.61m)

Entered via a double glazed door, radiator, loft access, airing cupboard with combi boiler, door to:

## Kitchen

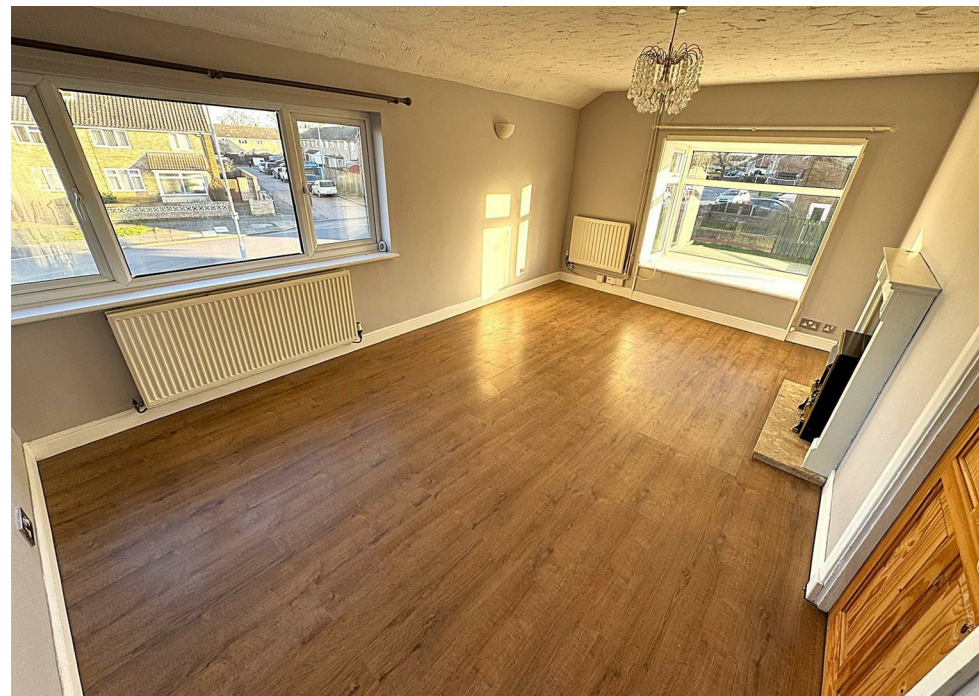
10'8 x 9'6 (3.25m x 2.90m)

Fitted to comprise a range of base and eye level units with a single steel sink and drainer, five ring gas hob with extractor, electric oven, radiator, double glazed window to front elevation.

## Lounge/Diner

16'10 x 10'8 (5.13m x 3.25m)

Double glazed Bay window to front elevation, double glazed window to side













elevation, radiator, tv point, telephone point, electric fire.

### **Bedroom One**

15'3 x 8'10 (4.65m x 2.69m)

Double glazed window to front elevation, radiator, built in wardrobe.

### **Bedroom Two**

11'0 x 9'8 (3.35m x 2.95m)

Double glazed window to rear elevation, radiator, built in wardrobe.









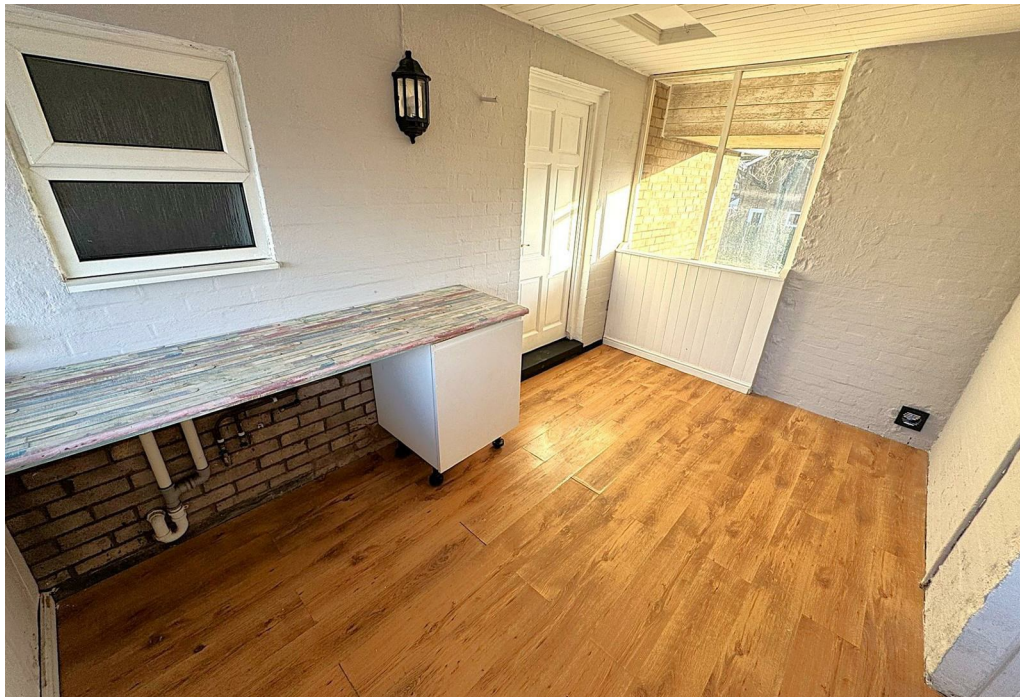
## Bathroom

5'2 x 4'8 (1.57m x 1.42m)

Fitted to comprise a three piece suite consisting of a panel bath with mains feed shower over, low level wash hand basin, low level pedestal, radiator, double glazed window to rear elevation.

## Outside

Front: A shared laid lawn leads around the entire home and leads to a shared rear courtyard garden and storage barns.











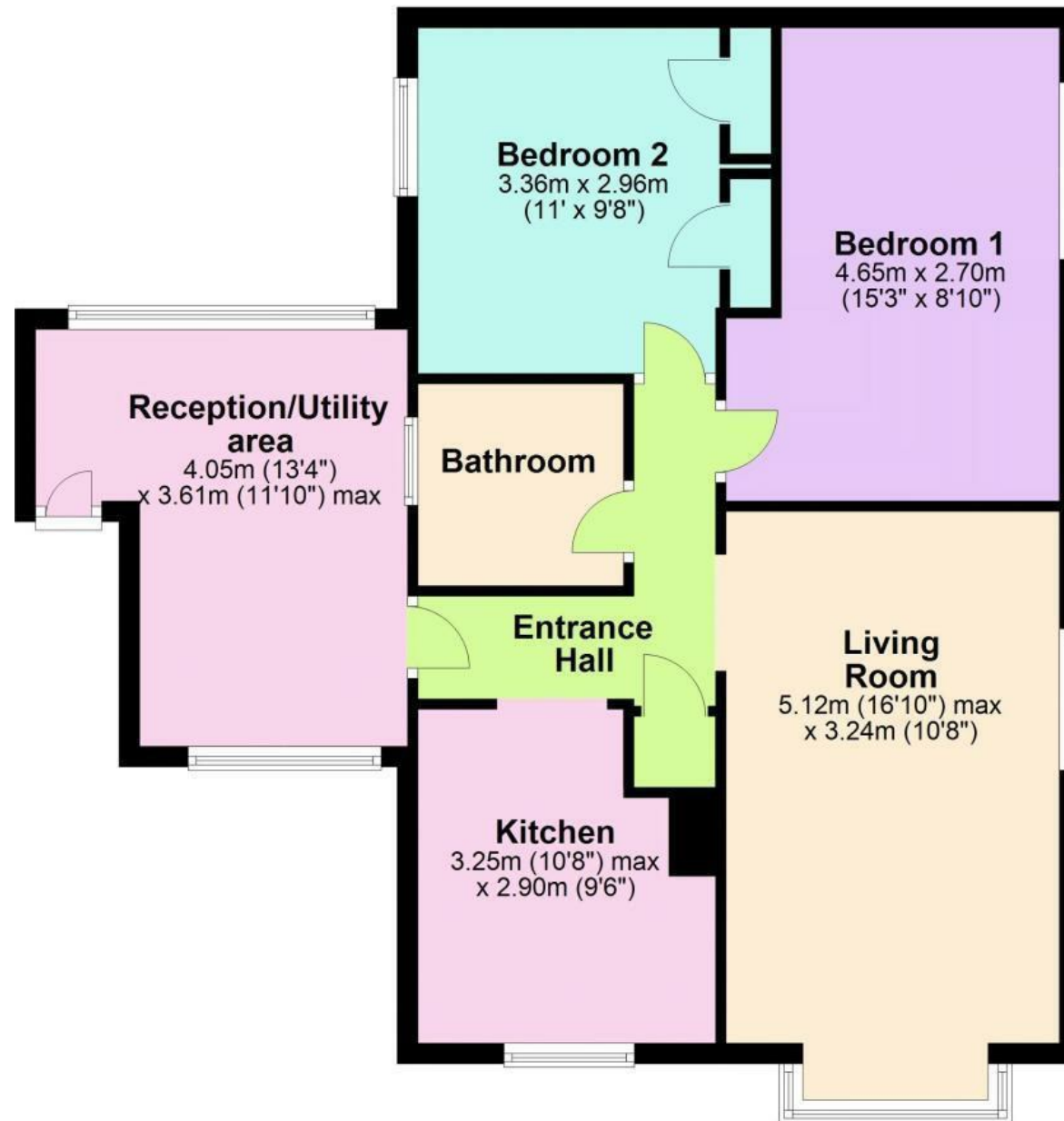






## Ground Floor

Approx. 77.2 sq. metres (830.5 sq. feet)



Total area: approx. 77.2 sq. metres (830.5 sq. feet)



