



1 Easton Walk, Corby, NN17 1UP

£190,000

Stuart Charles are delighted to offer FOR SALE with NO CHAIN this three bedroom family home located in the Old village area of Corby. Situated a short walk away from several schools to include the Old Village school, Corby technical school and Tresham college as well as the main high street an early viewing is recommended to avoid missing out on this home. The accommodation comprises to the ground floor of an entrance hall, guest W.C, lounge/diner and kitchen. To the first floor are three good sized bedrooms and a three piece family bathroom. Outside to the front is a low maintenance lawn while to the rear this south facing garden features a large extended patio area leads onto a low maintenance lawn and is enclosed by timber fencing and brick wall to all sides.

- NO CHAIN
- GUEST W.C
- THREE GOOD SIZED BEDROOMS
- IDEAL FOR FIRST TIME BUYERS
- WALKING DISTANCE TO PRIMARY AND SECONDARY SCHOOLS
- LARGE LOUNGE/DINER
- MODERN KITCHEN
- THREE PIECE FAMILY BATHROOM
- WALKING DISTANCE TO MAIN HIGH STREET AND TRAIN STATION
- WALKING DISTANCE TO TESCO/TOWN CENTRE AND WEST GLEBE PARK

Entrance Hall

Entered via a double glazed door, radiator, stairs rising to first floor landing, two storage cupboards with combi boiler in one, doors to:

W.C

Fitted to comprise a low level pedestal and double glazed window to front elevation.

Lounge/Diner

25'10 max x 10'06 max (7.87m max x 3.20m max)

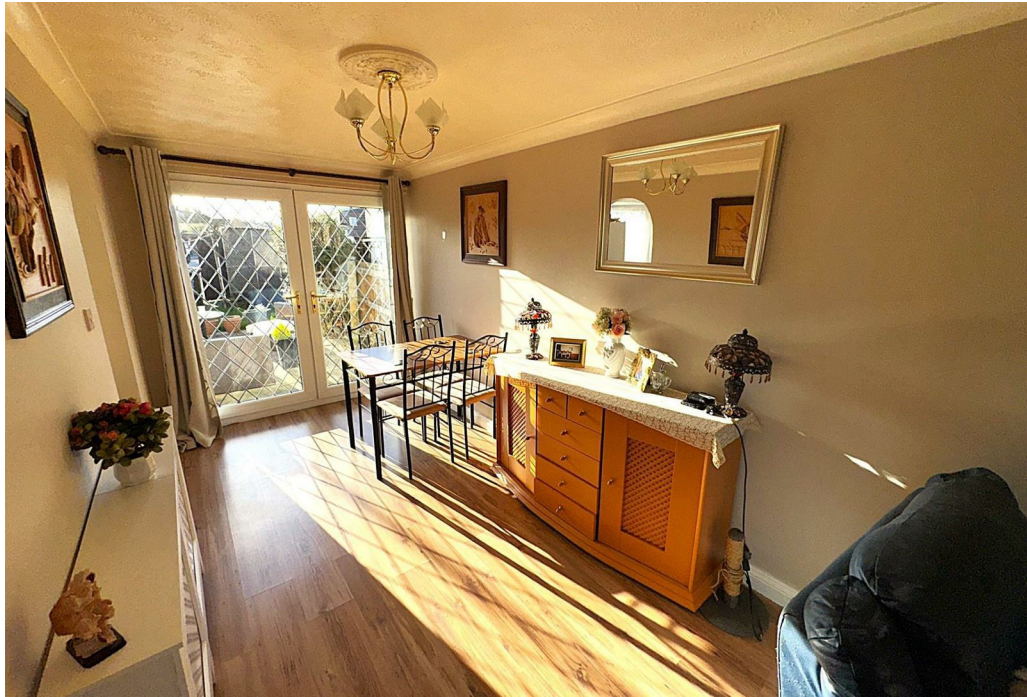
Double glazed window to front elevation, Tv point, telephone point, radiator, double glazed window and door to rear elevation,

Kitchen

10'08 x 9'0 (3.25m x 2.74m)

Fitted to comprise a range of base and eye level units with a single sink and







drainer, gas hob with extractor, electric oven, integrated washing machine, integrated dishwasher, space for free standing fridge/freezer, radiator, double glazed window and door to rear elevation.

First Floor Landing

Stairs rising from first floor landing, storage cupboard, doors to:

Bedroom One

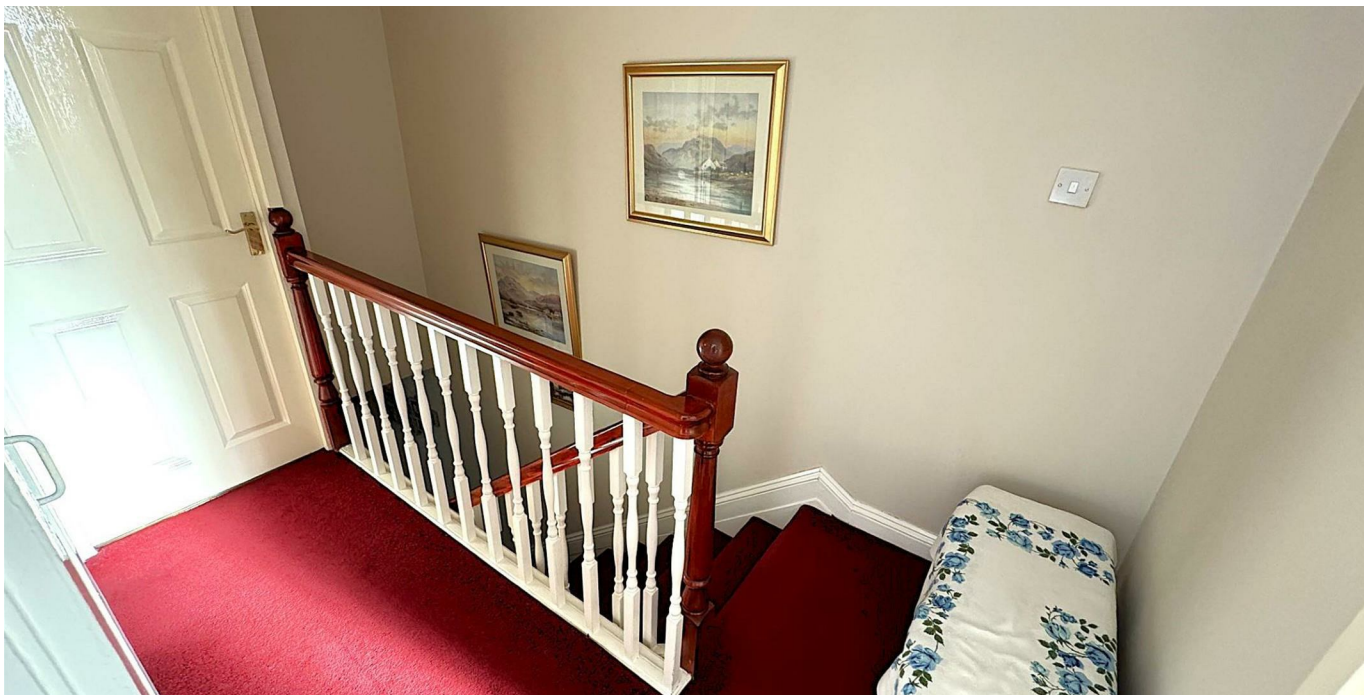
11'08 x 10'08 (3.56m x 3.25m)

Double glazed window to rear elevation, radiator.

Bedroom Two

14'04 x 8'08 (4.37m x 2.64m)

Double glazed window to front elevation, radiator.





Bedroom Three

8'08 x 7'10 (2.64m x 2.39m)

Double glazed window to front elevation, radiator.

Bathroom

Fitted to comprise a three piece suite consisting of a corner bath with electric shower over, low level pedestal, low level wash hand basin, radiator, double glazed window to rear elevation.

Outside

Front: A laid lawn leads from the front to the side elevation.

Rear: An extended patio area leads onto a laid lawn and is enclosed by brick wall and timber fencing to all, gated access is provided to the rear.



