



**STUART  
CHARLES**  
ESTATE AGENTS



## Bembridge House

, Corby, NN17 1UE

£169,950



# Bembridge House

, Corby, NN17 1UE

£169,950



## Entrance hall

Entered via a front door, boiler cupboard, doors to:

## Kitchen/Lounge/Diner

22'8" x 10'5" (6.93m x 3.20m)

An open plan room consisting of range of base and eye level units with a one and a half bowl sink and drainer, electric hob with extractor, electric double oven, integrated fridge/freezer and dishwasher, two radiators, double glazed french doors to the front elevation, tv point, telephone point.

## Bedroom One

13'3" x 9'1" (4.06m x 2.79m)

Double glazed windows to rear elevation, double built in wardrobe, radiator, door to:

## Bedroom Two

13'3" x 8'0" (4.06m x 2.46m)

Double glazed windows to rear elevation, radiator, door to:

## Bathroom

9'1" x 5'8" (2.77m x 1.75m)

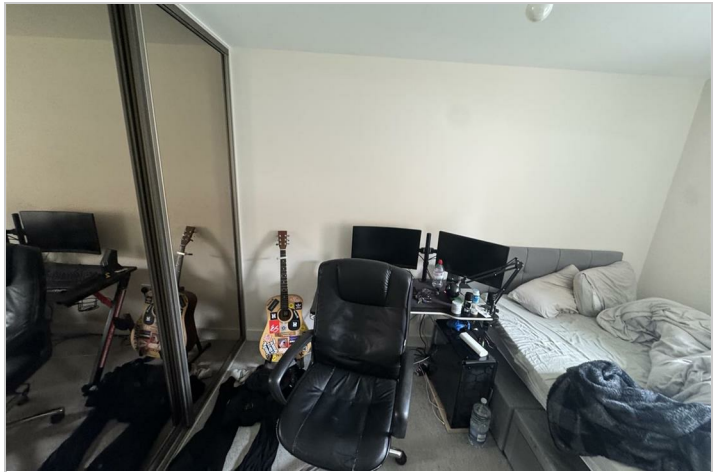
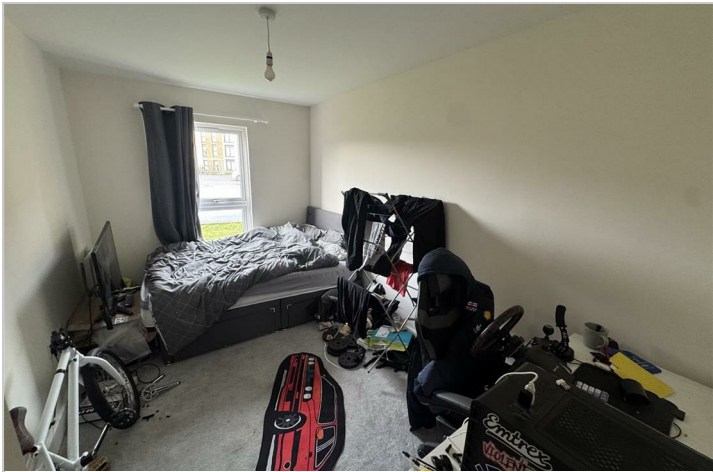
Fitted to comprise of a low level hand wash basin, low level pedestal, walk-in shower tray with overhead system shower, radiator, extractor.

## Boiler/utility room

Hot water cylinder, space for washing machine.

## Outside

Bike rack, Large allocated private car park.



### Road Map



### Hybrid Map



### Terrain Map



### Floor Plan



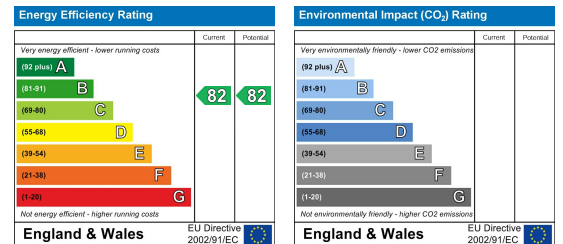
**Floor Plan**

Illustration for identification purposes only, measurements are approximate, not to scale.  
Produced by Elements Property

### Viewing

Please contact our Stuart Charles Estate Agents Office on 01536 234264 if you wish to arrange a viewing appointment for this property or require further information.

### Energy Efficiency Graph



These particulars, whilst believed to be accurate are set out as a general outline only for guidance and do not constitute any part of an offer or contract. Intending purchasers should not rely on them as statements of representation of fact, but must satisfy themselves by inspection or otherwise as to their accuracy. No person in this firm's employment has the authority to make or give any representation or warranty in respect of the property.