



18 Barnsley Square, Corby, Northamptonshire, NN18 0PQ



£200,000

Stuart Charles are delighted to offer FOR SALE this three bedroom family home located in the Beanfield area of Corby. This home is situated a short walk from the town centre and a range of amenities to include primary and secondary schools and several shopping areas an early viewing is recommended to avoid missing out on this home. The accommodation comprises to the ground floor of an entrance hall, living room, kitchen/diner and a utility room. To the first floor are three good sized bedrooms and a three piece family bathroom. Outside to the front is a low maintenance laid lawn, while to the rear a large patio area leads to a laid lawn and further hardstanding area with the garden being fully enclosed by timber fencing to all sides. Call now to view!!.

- LARGE LOUNGE
- THREE GOOD SIZED BEDROOMS
- LARGE REAR GARDEN
- CLOSE TO PRIMARY AND SECONDARY SCHOOLS
- OPEN PLAN KITCHEN/DINER WITH UTILITY ROOM
- MODERN BATHROOM
- WALKING DISTANCE TO TOWN CENTRE
- CLOSE TO SHOPS

Entrance Hall

Entered via a double glazed door, radiator, stairs rising to first floor landing, radiator.

Living Room

12'9" x 10'1" (3.89m x 3.07m)

Double glazed window to front elevation, radiator, tv point, telephone point, electric fire, door to:

Kitchen/Diner

20'2" x 8'0 (6.15m x 2.44m)

Fitted to comprise a range of base and eye level units with a one and a half bowl steel sink and drainer, gas hob with extractor, electric oven, integrated washing machine, two double glazed windows to rear elevation, door to:

Utility Room

7'3 x 5'4 (2.21m x 1.63m)

Double glazed door to side elevation,







space for free standing fridge/freezer, under stairs storage.

First Floor Landing

Double glazed window to front elevation, loft access, airing cupboard, doors to:

Bedroom One

11'7 x 11'5 (3.53m x 3.48m)

Double glazed window to rear elevation, radiator.

Bedroom Two

11'4 x 9'9 (3.45m x 2.97m)

Double glazed window to front elevation, radiator.





Bedroom Three

8'7 x 8'5 (2.62m x 2.57m)

Double glazed window to rear elevation, radiator.

Bathroom

7'06 x 5'06 (2.29m x 1.68m)

Fitted to comprise a three piece suite consisting of a panel bath with mains feed shower over, low wash hand basin, low level pedestal, radiator, double glazed window to side elevation.

Outside

Front: Laid to lawn with gated access to the side elevation.

Rear: A large patio area leads onto a laid lawn and to





a further hard standing area to the rear of the garden,
the whole garden is enclosed by timber fencing to all
sides.

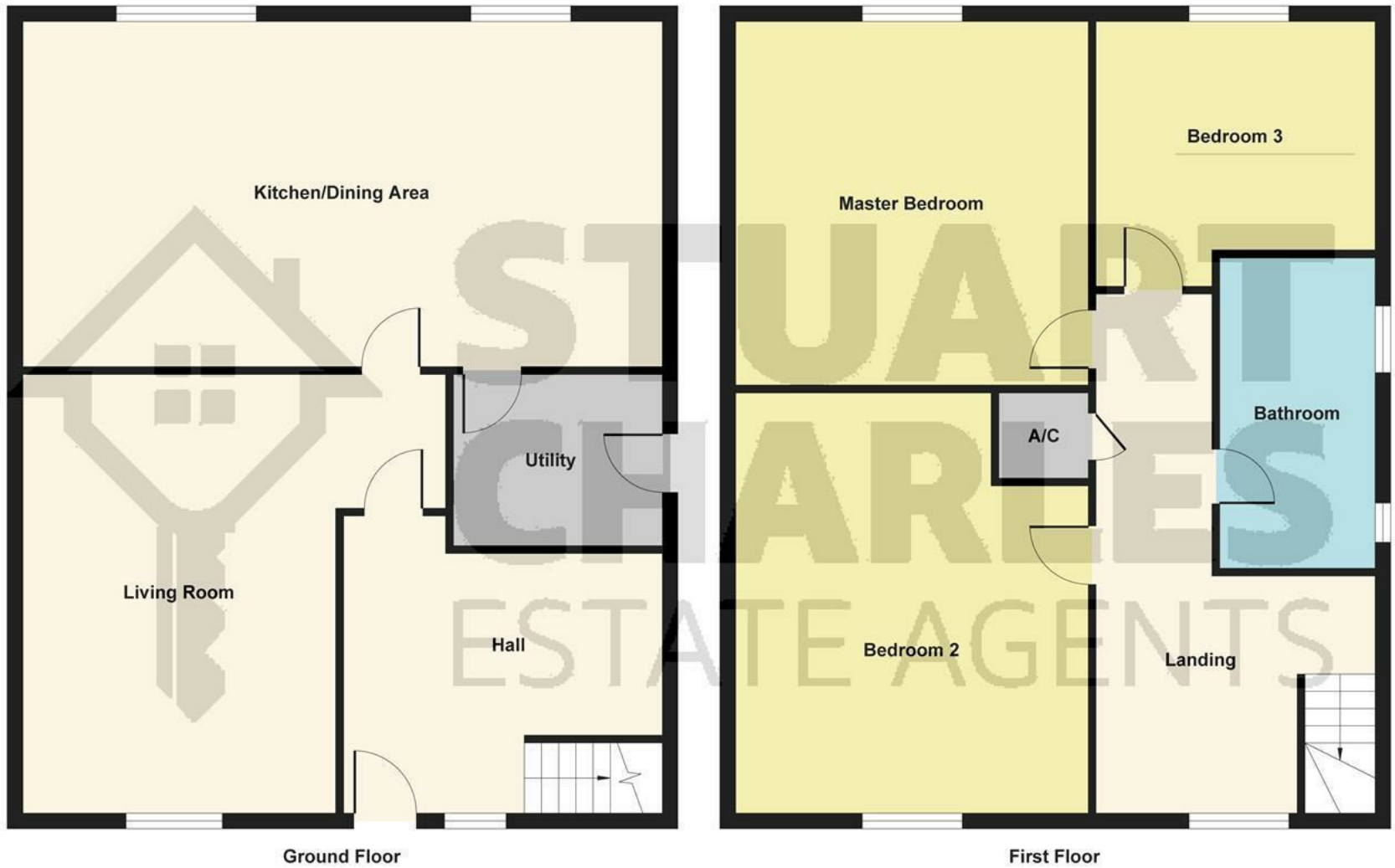


Illustration for identification purposes only, measurements are approximate, not to scale.
Produced by Elements Property

