



98 Beanfield Avenue, Corby, NN18 0AY



## £195,000

Stuart Charles are delighted to offer for sale this very well presented three bedroom terrace home, located in the desirable area of beanfield in Corby. Located just a short walk away from local schools, shops, transport links and town centre, this home is situated in a prime location and an early viewing is recommended to avoid missing out on this home. The accommodation on offer comprises of an entrance hall giving access to the modern kitchen, leading onto a large lounge/diner. To the first floor are three good sized rooms, providing enough space for the whole family, and a family bathroom. To the front is a laid lawn with paved path to the front door with privet hedge surround. To the rear a patio area leads onto a laid lawn and is enclosed by privet hedge to all sides . Call now to book a viewing for this !!!

- MODERN COMBI BOILER
- FULLY TILED BATHROOM
- GOOD TRANSPORT LINKS
- CLOSE TO LOCAL SHOPPING PRECINCT
- NEW KITCHEN
- POPULAR LOCATION
- THREE GOOD SIZE BEDROOMS

### Entrance Hall

Entered via a double glazed door, radiator, archway to kitchen/breakfast.

### Kitchen

16'6 x 7'0 max ( 11'2 ) ( 5.03m x 2.13m max ( 3.40m))

Featuring a range of base and eye level units with a single steel sink and drainer, gas hob and electric oven, extractor hood, space for free standing fridge/freezer, space for automatic

washing machine, space for dishwasher, double glazed window to rear elevation, archway to:

### Lounge/Diner

20'8 x 10'4 ( 6.30m x 3.15m )

Two radiators, tv point, telephone point, double glazed window to front elevation, double glazed French doors to rear.







## Landing

Loft access, two storage cupboard, doors to:

### Bedroom One

10'7 x 9'5 (3.23m x 2.87m)

Double glazed window to front elevation, built in wardrobe, radiator.

### Bedroom Two

10'8 x 10'0 (3.25m x 3.05m)

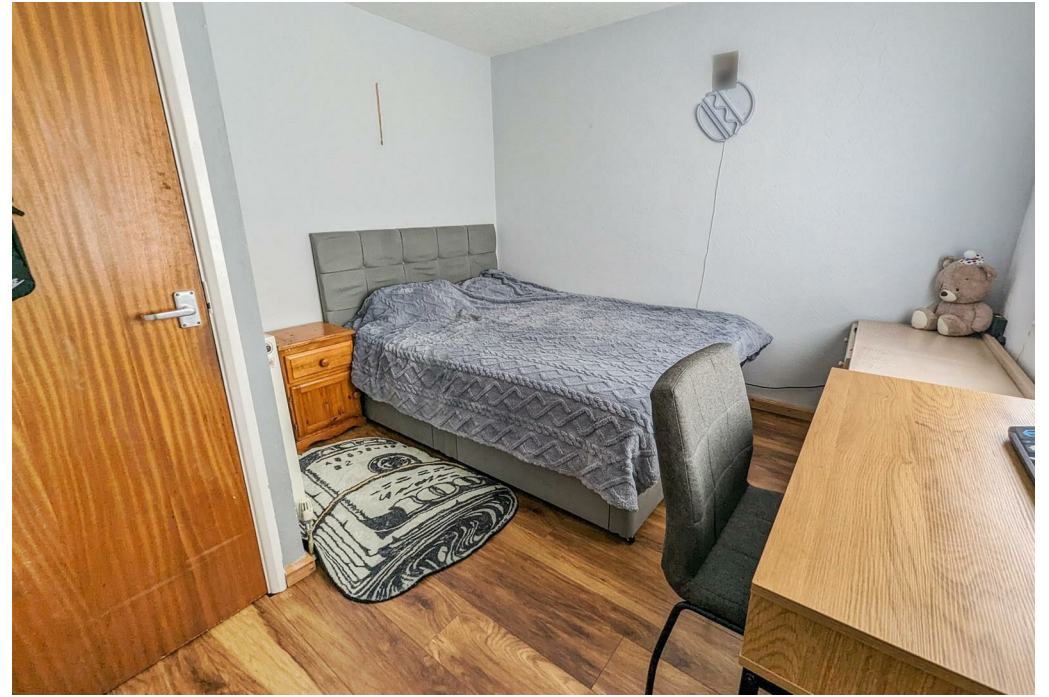
Double glazed window to rear elevation, radiator.

### Bedroom Three

11'2 x 7'0 (3.40m x 2.13m)

Double glazed window to front elevation, radiator.





## Bathroom

8'1 x 5'8 (2.46m x 1.73m)

Featuring a three piece suite with a bath and mains feed shower over, low level wash hand basin, low level pedestal, double glazed window to rear elevation, radiator.

## Outside

To the front is a laid lawn with paved path to the front door with privet hedge surround.

To the rear a patio area leads onto a laid lawn and is enclosed by privet hedge to all sides

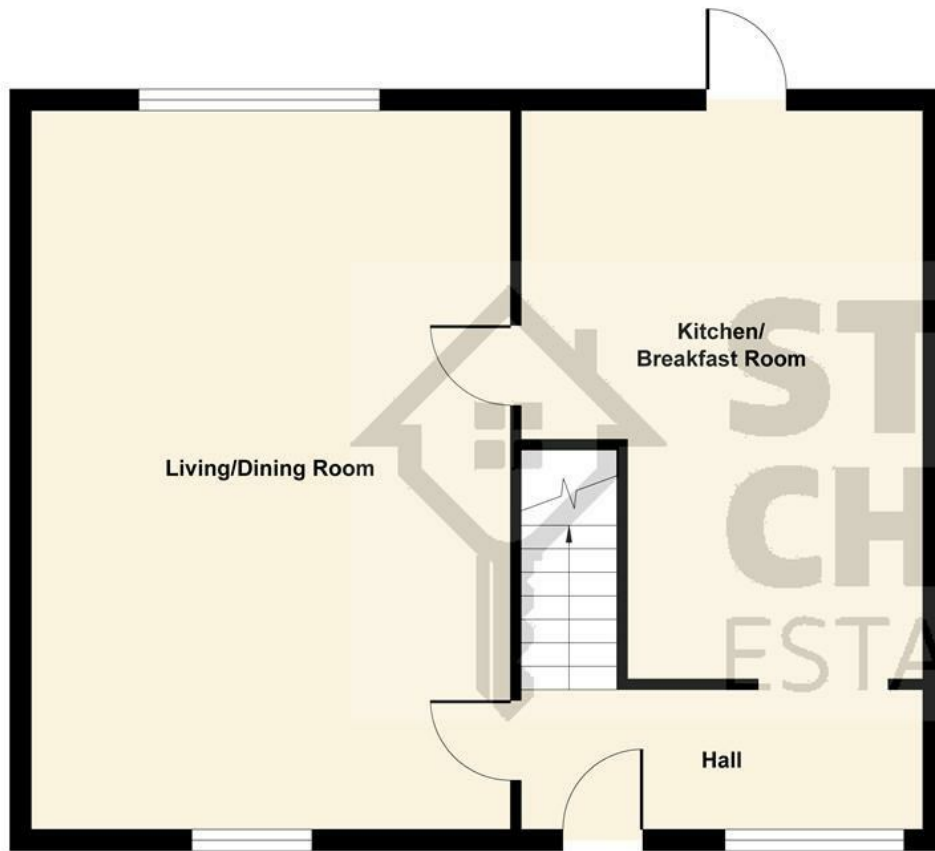




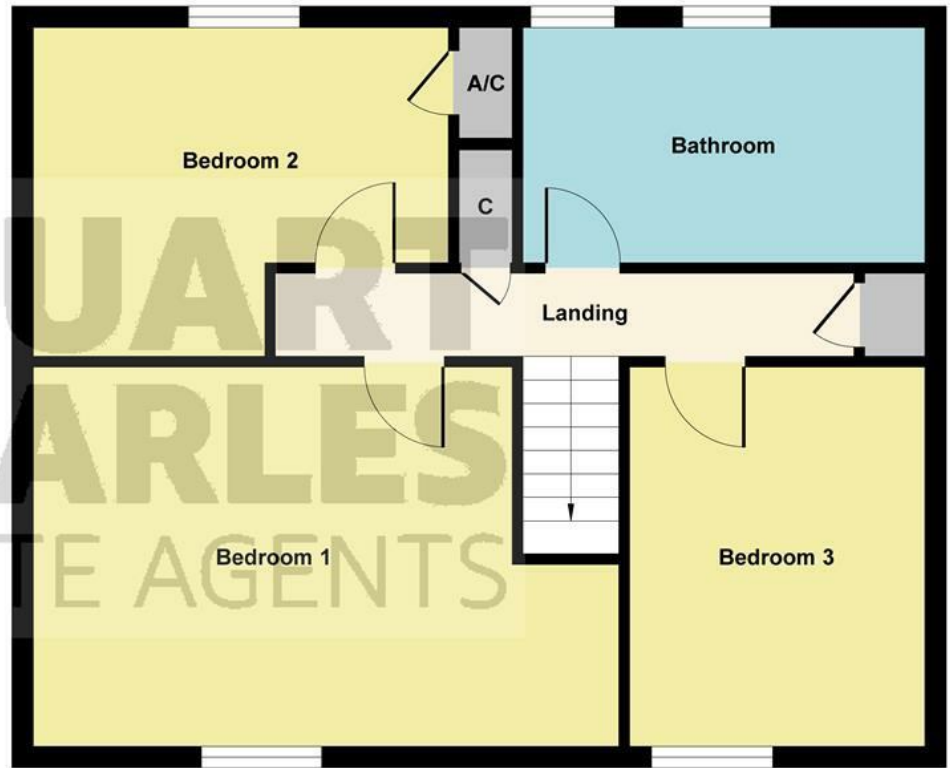








Ground Floor



First Floor

Illustration for identification purposes only, measurements are approximate, not to scale.  
Produced by Elements Property

